



CONTRACT
ADDENDUM #3

Date of Issuance: 2.21.2025
Project: Hyrum City – Libbie Springs Park
Subject: Contract Document revisions & bid Questions/Responses

Incorporate the following revisions to the Specifications, Drawings and other Contract Documents of the above named project. General Items are not referenced. Revisions to the Specifications are referenced by section, page number, and paragraph number. Revisions to the Drawings are referenced by drawing sheet number. This addendum forms part of the Construction Document.

The end of the Addendum is indicated by the note "END OF ADDENDUM". Attachments are located at the end of the Addendum and are referenced in the Addendum.

Item3.1

- Add plumbing plan and details to restroom set of plans. Note the restroom chase needs to be coordinated with owner prior to any construction. Chase access door shall be adjusted to same side as restroom doors and mop sink is not needed.

Attachments: P-100, P-101

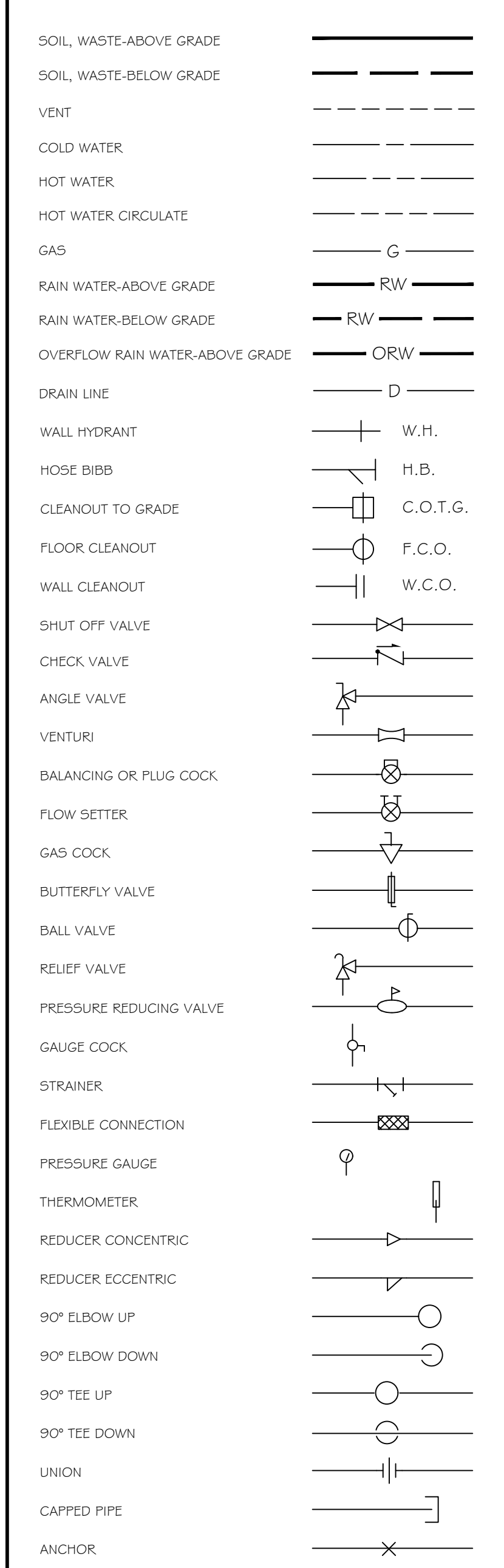
END OF ADDENDUM

 02.21.2025

 ISSUED BY Date
 Landscape Architect

 ACCEPTED BY Date
 Contractor

PLUMBING SYMBOL LEGEND



PLUMBING ABBREVIATIONS

BHP	BRAKE HORSE POWER	NTS	NOT TO SCALE
BTU	BRITISH THERMAL UNIT	NO	NUMBER
CLG	COOLING	OZ	OUNCE
CW	COLD WATER	PSI	POUNDS PER SQUARE INCH
DP	DEPTH OR DEEP	PSIA	PSI ABSOLUTE
ID	INSIDE DIAMETER	PSIG	PSI GAUGE
OD	OUTSIDE DIAMETER	PRESS	PRESSURE
(E)	EXISTING	PD	PRESSURE DROP
EFF	EFFICIENCY	RECIRC	RECIRCULATE
ELEV	ELEVATION	RPM	REVOLUTIONS PER MINUTE
(F)	FUTURE	RW	RAIN WATER
F	FARENHEIT	SCW	SOFT COLD WATER
FC	FLEXIBLE CONNECTION	SF	SAFETY FACTOR
FT	FEET	SL	SEA LEVEL
GAL	GALLONS	SPEC	SPECIFICATION(S)
GPH	GALLONS PER HOUR	SQ	SQUARE
GPM	GALLONS PER MINUTE	STD	STANDARD
HD	HEAD	SPLY	SUPPLY
HT	HEIGHT	TEMP	TEMPERATURE
HTG	HEATING	TD	TEMP. DROP OR DIFF.
HP	HORSE POWER	R	THERMAL RESISTANCE
HW	HOT WATER	T	TIME
LG	LENGTH	VAC	VACUUM
MAX	MAXIMUM	VENT	VENT. VENTILATION
MIN	MINIMUM	VERT	VERTICAL
NO	NORMALLY OPEN	VOL	VOLUME
NC	NORMALLY CLOSED	WTR	WATER
NA	NOT APPLICABLE	WT	WEIGHT
NA	NOT IN CONTRACT	YR	YEAR

PLUMBING SPECIFICATIONS ②

VALVES

A. PROVIDE AND INSTALL BALL SHUTOFF VALVES WHERE SHOWN ON PLANS FOR LINES 3" AND SMALLER. BALL VALVES SHALL BE MSS SP-110, CLASS 150 BRONZE BODY AND BONNET AND VINYL-COVERED STEEL HANDLE.

B. PROVIDE AND INSTALL BUTTERFLY VALVES WHERE SHOWN ON PLANS FOR LINES 4" AND LARGER. BUTTERFLY VALVES SHALL BE MSS SP-67, ASTM A 126 CAST-IRON BODY AND BONNET WITH EPDM SEALS.

PLUMBING PIPING

A. WATER DISTRIBUTION PIPING - BELOW GROUND (150 PSIG):
 3-1/2" AND SMALLER - USE TYPE K SOFT OR HARD COPPER TUBE WITH CAST COPPER ALLOY BRAZED JOINT PRESSURE FITTINGS.

B. WATER DISTRIBUTION PIPING - ABOVE GROUND (125 PSIG):
 3-1/2" AND SMALLER - USE TYPE L HARD COPPER TUBE WITH CAST COPPER ALLOY BRAZED JOINT PRESSURE FITTINGS.

C. WASTE AND VENT PIPING - BELOW GROUND (10-FOOT HEAD OF WATER):
 2" TO 6" - USE ACRYLONITRILE-BUTADIENE-STYRENE (ABS) PLASTIC PIPE WITH ABS SOCKET-TYPE DRAIN, WASTE, AND VENT PIPE PATTERN FITTINGS WITH SOLVENT CEMENTED JOINTS OR PVC.

D. WASTE AND VENT PIPING - ABOVE GROUND (10-FOOT HEAD OF WATER):
 2" TO 6" - USE ACRYLONITRILE-BUTADIENE-STYRENE (ABS) PLASTIC PIPE WITH ABS SOCKET-TYPE DRAIN, WASTE, AND VENT PIPE PATTERN FITTINGS WITH SOLVENT CEMENTED JOINTS OR PVC.

E. STORM DRAINAGE PIPING - ABOVE GROUND (10-FOOT HEAD OF WATER):
 2" TO 8" - USE HUB-AND-SPIGOT CAST-IRON SOIL PIPE WITH CAST IRON SOIL PIPE FITTINGS, NEOPRENE RUBBER GASKETS, AND COMPRESSION JOINTS.

F. INSTALL HANGERS FOR HORIZONTAL COPPER AND CAST IRON PIPING WITH THE FOLLOWING MAXIMUM SPACING AND MINIMUM ROD SIZES:

NOM. PIPE SIZE	MAX. SPAN	MIN. ROD DIA.
3/4"	6'	3/8"
1"	6'	3/8"
1-1/2"	6'	3/8"
2-1/2"	12'	1/2"
3"	12'	1/2"
3-1/2"	12'	1/2"
4"	12'	5/8"
5"	12'	5/8"
6"	12'	3/4"

SUPPORT VERTICAL PIPE AND TUBING AT EACH FLOOR.

G. SUPPORT HORIZONTAL ABS AND PVC PIPING WITH PIPE HANGERS LOCATED AT 4' MAXIMUM SPAN.

H. CLEAN, FLUSH, AND TEST ALL WATER DISTRIBUTION PIPING TO 1-1/2 TIMES THE OPERATING PRESSURE FOR A TIME PERIOD OF 4 HOURS. PURGE AND DISINFECT POTABLE WATER SYSTEMS WITH A WATER-CHLORINE SOLUTION IN ACCORDANCE WITH THE LOCAL HEALTH CODE REQUIREMENTS. TEST AND SUBMIT SATISFACTORY REPORT PRIOR TO BUILDING OCCUPANCY.

I. CLEAN, FLUSH, AND TEST THE WASTE AND VENT PIPING SYSTEM TO 10 FEET HEAD OF WATER.

PLUMBING FIXTURES

A. PROVIDE AND INSTALL PLUMBING FIXTURES WHERE INDICATED ON THE DRAWINGS FOR A COMPLETE PLUMBING SYSTEM. PROVIDE ALL REQUIRED CARRIERS, SUPPORTS, EQUIPMENT, HANGERS, FITTINGS, TRIM, STOPS, AND ACCESSORIES ASSOCIATED WITH THE PLUMBING FIXTURES. COORDINATE THE COLOR, STYLE, COLOR, AND ACCESSORIES OF EACH FIXTURE WITH THE BUILDING OWNER. ALL FIXTURES NOTED AS ACCESSIBLE SHALL COMPLY WITH A.D.A. REQUIREMENTS. COORDINATE ALL ELECTRICAL REQUIREMENTS WITH THE ELECTRICAL SUB-CONTRACTOR. INSTALL ALL PLUMBING FIXTURES PLUMB, LEVEL, AND ACCORDING TO THE MANUFACTURERS INSTALLATION INSTRUCTIONS. REFER TO THE PLUMBING FIXTURE SCHEDULE.

B. PROVIDE PLUMBING FIXTURES FROM THE FOLLOWING MANUFACTURERS:
 WATER CLOSETS AND URINALS:
 AMERICAN STANDARD, BRIGGS, CRANE, ELIER, KOHLER
 LAVATORIES:
 ACORN, AMERICAN STANDARD, BRIGGS, CRANE, ELIER, ELKAY, KOHLER
 SINKS AND SERVICE SINKS:
 AMERICAN STANDARD, BRIGGS, CRANE, ELIER, ELKAY, KOHLER
 DRINKING FOUNTAINS AND WATER COOLERS:
 ELKAY, HALSEY-TAYLOR, HAWS, OASIS, SUNROC
 FLUSHMETERS:
 SLOAN, ZURN
 FAUCETS:
 AMERICAN STANDARD, BRIGGS, CHICAGO, CRANE, DELTA, ELIER, ELKAY, GERBER, KOHLER, MOEN, PRICE PFISTER, SYMMONS, T & S BRASS

C. SUBMIT MANUFACTURERS CUTSHEET FOR REVIEW AND APPROVAL FOR EACH PLUMBING FIXTURE INCLUDING MANUFACTURER, MODEL, STYLE, OPTIONS, AND ACCESSORIES.

FIRE SPRINKLER SYSTEM

A. NOT INCLUDED IN THIS CONTRACT.

PLUMBING SPECIALTIES

A. PROVIDE AND INSTALL CLEANOUTS AND COVER PLATES WHERE INDICATED ON THE DRAWINGS. INSTALL A CLEANOUT AT EACH PLUMBING FIXTURE. CLEANOUT FLOOR COVER PLATES SHALL BE MOUNTED FLUSH WITH THE FLOOR. COORDINATE CLEANOUT COVER PLATES WITH WALL OR FLOOR SURFACE FINISH.

PLUMBING SPECIFICATIONS ①

BASIC PLUMBING REQUIREMENTS

A. COMPLY WITH THE REQUIREMENTS OF THE 2015 EDITION OF THE INTERNATIONAL BUILDING CODE (IBC), INTERNATIONAL MECHANICAL CODE (IMC), INTERNATIONAL PLUMBING CODE (IPC), INTERNATIONAL FUEL GAS CODE (IFGC), AND INTERNATIONAL ENERGY CONSERVATION CODE (IECC), AND THE CURRENT NATIONAL ELECTRIC CODE (NEC) INCLUDING ALL STATE AMENDMENTS. COMPLY WITH THE AUTHORITY HAVING JURISDICTION AND ALL APPLICABLE CITY, COUNTY, STATE, AND FEDERAL CODES AND REGULATIONS IN EFFECT AT THE BID DATE.

B. PREPARE AND SUBMIT SHOP DRAWINGS FOR ALL PLUMBING FIXTURES, EQUIPMENT, VALVES, AND ACCESSORIES INCLUDING MANUFACTURER'S NAME, CATALOG NUMBER, DESCRIPTION, SIZE, CAPACITY, ELECTRICAL REQUIREMENTS, OPERATION, AND MAINTENANCE INFORMATION. SHOP DRAWINGS SHALL BE REVIEWED AND STAMPED BY THE PLUMBING AND GENERAL CONTRACTOR PRIOR TO ENGINEER'S REVIEW. FIXTURES, EQUIPMENT, ETC. SHALL NOT BE ORDERED UNTIL APPROVED SHOP DRAWINGS HAVE BEEN RECEIVED.

C. PREPARE COORDINATION DRAWINGS DETAILING ALL MAJOR EQUIPMENT AND SYSTEMS. INCLUDE EQUIPMENT CONNECTIONS, CLEARANCES, FIRE-RATED WALL OR FLOOR PENETRATIONS, CONCRETE PADS, AND SUPPORT DETAILS IN COORDINATION DRAWINGS. COORDINATION DRAWINGS SHALL BE IN CONJUNCTION WITH THE MECHANICAL, FIRE SPRINKLER (WHERE REQUIRED), ELECTRICAL, REFLECTED CEILINGS, AND ALL OTHER APPLICABLE TRADES.

D. PREPARE RECORD "AS BUILT" DOCUMENTS INCLUDING ALL CHANGES FROM THE ORIGINAL BID DOCUMENTS. SUBMIT COMPLETE "AS BUILT" DOCUMENTS AT THE COMPLETION OF THE PROJECT.

E. PROVIDE OPERATION AND MAINTENANCE (O & M) MANUALS CONTAINING INFORMATION FOR ALL MECHANICAL AND PLUMBING SYSTEMS. THE MANUALS SHALL CONTAIN A LIST OF ALL SUB-CONTRACTORS AND SUPPLIERS, EQUIPMENT CUT SHEETS, START-UP INFORMATION, BALANCING REPORTS, AND MAINTENANCE REQUIREMENTS. THE MANUALS SHALL BE HARD BACKED 3-RING BINDERS WITH THE PROJECT LABELED ON THE COVER AND SPINE.

F. INSTALL ALL PLUMBING EQUIPMENT AND MATERIALS IN COORDINATION WITH ALL OTHER TRADES. VERIFY ALL ELECTRICAL CONNECTIONS WITH THE ELECTRICAL CONTRACTOR PRIOR TO INSTALLATION.

G. PROVIDE AND INSTALL ACCESS DOORS WHERE EQUIPMENT OR VALVES ARE CONCEALED BEHIND FINISHED SURFACES.

H. PROVIDE FACTORY-AUTHORIZED EQUIPMENT START-UP, COMMISSIONING, AND TRAINING OF ALL PLUMBING EQUIPMENT.

I. INSTALL ALL SYSTEMS, MATERIALS, AND EQUIPMENT LEVEL AND PLUMB, PARALLEL AND PERPENDICULAR TO OTHER BUILDING SYSTEMS AND COMPONENTS. INSTALL ALL PIPING FREE FROM SAGS AND BENDS AND AT THE SLOPE INDICATED (WHERE REQUIRED). INSTALL PIPING AND EQUIPMENT TO PROVIDE THE MAXIMUM POSSIBLE HEADROOM.

J. ALL WORK SHALL BE PERFORMED BY CERTIFIED AND SKILLED WORKERS WITH PRIOR EXPERIENCE IN THEIR PARTICULAR TRADE.

K. THE PLUMBING SUB-CONTRACTOR SHALL PROVIDE WARRANTY THE ENTIRE PLUMBING SYSTEM FOR A PERIOD OF ONE YEAR. INCLUDE THE WARRANTY AND ALL OTHER GUARANTEES AND WARRANTIES IN THE OPERATION AND MAINTENANCE MANUAL.

L. THE CONTRACTOR SHALL REPAIR OR REPLACE ALL DAMAGED PIPING, EQUIPMENT, OR OTHER DAMAGE DURING CONSTRUCTION.

M. PROVIDE AND INSTALL ALL PLUMBING EQUIPMENT, PIPING, FIXTURE, AND ACCESSORIES IN STRICT ACCORDANCE WITH THE MANUFACTURERS INSTALLATION INSTRUCTIONS. PROVIDE ALL FITTINGS, VALVES, TRANSITIONS, AND OTHER DEVICES AS REQUIRED FOR A COMPLETE AND OPERATIONAL PLUMBING SYSTEM.

BASIC PLUMBING MATERIALS AND METHODS

A. ALL PIPE AND PIPE FITTINGS SHALL BE NEW AND SHALL BE AMERICAN MADE WITH APPROVED LABELS. DELIVER, STORE, AND PROTECT PIPING DURING CONSTRUCTION FROM DAMAGE, DIRT, AND MOISTURE.

B. PROVIDE AND INSTALL DIELECTRIC FITTINGS AND FLEXIBLE CONNECTORS WHERE REQUIRED FOR PROPER SYSTEM FLUID, PRESSURE, AND TEMPERATURE.

C. PROVIDE PIPE ESCUTCHEONS FOR ALL EXPOSED WALL AND CEILING PENETRATIONS. PROVIDE COVER PLATES FOR ALL FLOOR AND WALL CLEANOUTS.

D. SEAL ALL PIPE PENETRATIONS THROUGH WALLS AND FLOORS AIR TIGHT. CAULK ALL FIRE RATED PIPE PENETRATIONS WITH APPROVED FIRE-STOPPING MATERIAL.

E. CUT, CHANNEL, CHASE, AND DRILL FLOORS, WALLS, PARTITIONS, CEILINGS, AND OTHER SURFACES NECESSARY FOR PROPER INSTALLATION. REPAIR AS REQUIRED TO MATCH ADJACENT SURFACES.

HANGERS AND SUPPORTS

A. PROVIDE AND INSTALL PIPE SUPPORTS AND HANGERS AS REQUIRED FOR ALL PIPING AND EQUIPMENT ACCORDING TO MANUFACTURERS STANDARDIZATION SOCIETY (MSS) STANDARDS.

VIBRATION ISOLATION AND SEISMIC CONTROLS

A. PROVIDE AND INSTALL VIBRATION ISOLATORS, FLEXIBLE CONNECTIONS, ISOLATION PADS, AND OTHER EQUIPMENT TO PREVENT NOISE AND VIBRATION TRANSMISSION.

PIPING AND EQUIPMENT IDENTIFICATION

A. PROVIDE EQUIPMENT PIPE AND EQUIPMENT TAGS, LABELS, AND IDENTIFICATION INDICATING FLOW DIRECTION, AREA SERVED, SYSTEM TYPE AND OTHER IDENTIFYING INFORMATION. COMPLY WITH ASME PIPING AND EQUIPMENT IDENTIFICATION STANDARDS.

INSULATION

A. PROVIDE AND INSTALL GLASS FIBER PREFORMED PIPE INSULATION WITH VAPOR PROOF COATING ACCORDING TO THE FOLLOWING SCHEDULE:
 DOMESTIC COLD WATER PIPING:
 1/2" TO 2" PIPE SIZE - 3/4" INSULATION
 2" AND ABOVE - 1" INSULATION
 DOMESTIC HOT WATER AND RECIRCULATED HOT WATER PIPING:
 1/2" TO 2" PIPE SIZE - 1" INSULATION
 2" AND ABOVE - 1-1/2" INSULATION
 RAIN WATER PIPING AND PLUMBING VENTS (WITHIN 6' OF ROOF):
 1/2" TO 2" PIPE SIZE - 3/4" INSULATION
 2" AND ABOVE - 1" INSULATION

B. GLASS FIBER INSULATION SHALL HAVE A FLAME SPREAD RATING OF 25 OR LESS AND A SMOKE DEVELOPED RATING OF 50 OR LESS.

C. SEAL ALL ENDS AND JOINTS TO PROVIDE A COMPLETELY SEALED INSULATION SYSTEM. PROVIDE COVER HANGER INSERTS AND SHIELDS WITH JACKET MATERIAL MATCHING ADJACENT PIPE INSULATION.

D. PROVIDE SNAP ON INSULATION KIT ON ALL ADA COMPLIANT LAVATORIES AND SINKS.

PLUMBING GENERAL NOTES

1. PROVIDE ALL EQUIPMENT, PIPING, MATERIALS, LABOR, PERMITS, AND FEES TO CONSTRUCT A COMPLETE AND OPERATIONAL PLUMBING SYSTEM FOR THE ENTIRE PROJECT AS SHOWN ON THE DRAWINGS.
2. COORDINATE THE EXACT LOCATION OF ALL PLUMBING FIXTURES AND DRAINS WITH THE ARCHITECTURAL DRAWINGS AND THE GENERAL CONTRACTOR.
3. COORDINATE ALL WORK WITH THE GENERAL CONTRACTOR, MECHANICAL SUB-CONTRACTOR, ELECTRICAL SUB-CONTRACTOR, AND ALL OTHER TRADES IN THE PROJECT.
4. ALL PLUMBING INFORMATION IS NOT SHOWN ON THE PLUMBING DRAWINGS. COORDINATE ALL PLUMBING WORK WITH THE ARCHITECTURAL, STRUCTURAL, MECHANICAL, CIVIL, AND ELECTRICAL DRAWINGS.
5. PLUMBING PLANS ARE SCHEMATIC IN NATURE AND THEREFORE DO NOT SHOW ALL DROPS, RISERS, AND OFFSETS. THE CONTRACTOR SHALL MAKE ALL REQUIRED MODIFICATIONS TO PROVIDE A COMPLETE AND OPERATIONAL PLUMBING SYSTEM. MAJOR MODIFICATIONS SHALL BE REVIEWED AND APPROVED BY THE ENGINEER.
6. DO NOT RUN PIPING ABOVE ELECTRICAL PANELS. PROVIDE 4'-0" DEEP X 6'-6" HIGH CLEAR ACCESS SPACE IN FRONT OF PANELS. DO NOT RUN PIPING IN ELECTRICAL ROOMS.
7. INSTALL ALL PIPING SHOWN IN EXTERIOR WALLS ON THE WARM (ROOM) SIDE OF THE BUILDING INSULATION.
8. INSTALL WATER, GAS, AND VENT PIPING AS HIGH AS POSSIBLE ABOVE THE CEILING UNLESS NOTED OTHERWISE.
9. INSTALL WASTE PIPING BELOW THE FLOOR UNLESS NOTED OTHERWISE.
10. PROVIDE AND INSTALL 2" MINIMUM WASTE PIPE SIZE BELOW GRADE.
11. INSTALL EXTERIOR PIPING 48" MINIMUM BELOW GRADE.

REVIEW - NOT FOR CONSTRUCTION

MARK	DATE	DESCRIPTION

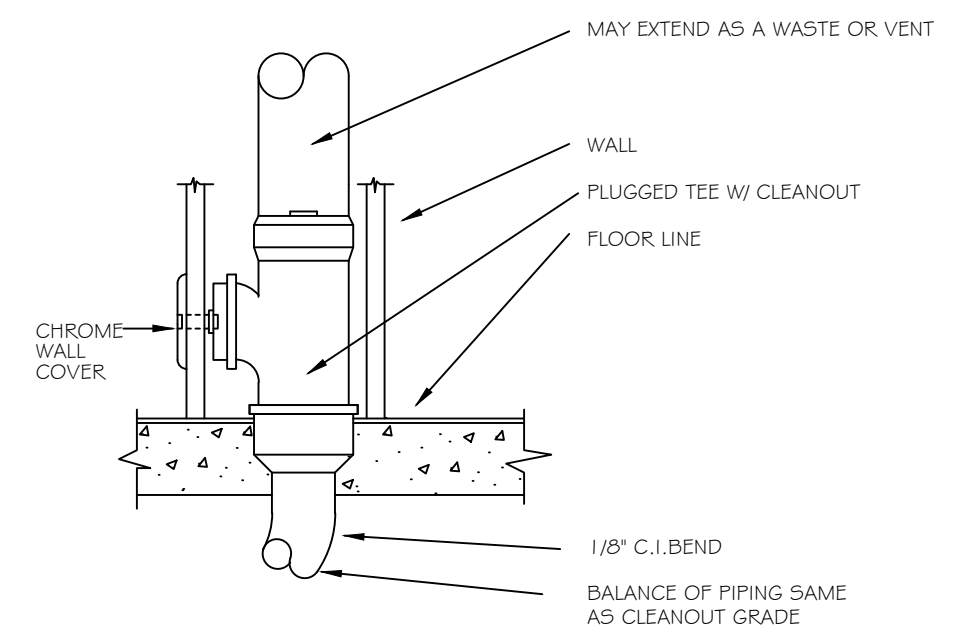
PROJECT #: 816081
 DRAWN BY: JT
 CHECKED BY: LRM
 ISSUED: 07/03/18



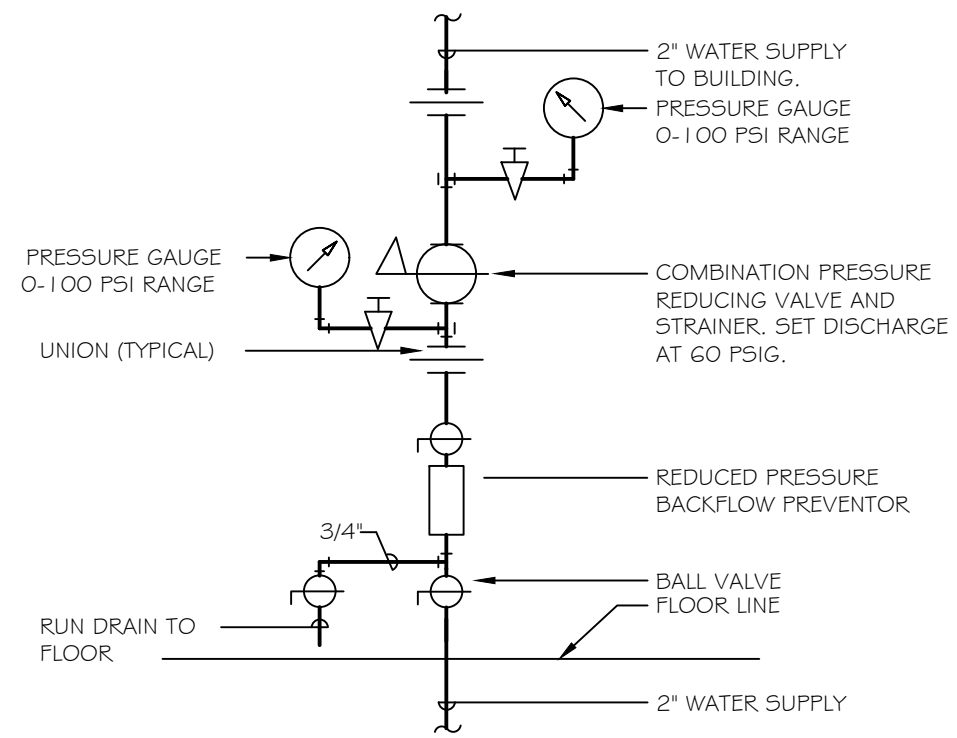
PLUMBING NOTES & LEGEND

OWNERSHIP OF DOCUMENTS
 These documents, including the design and specifications, are the property of MORTENSEN ENGINEERING, INC. and shall not be used, in whole or in part, for any other project without written permission.

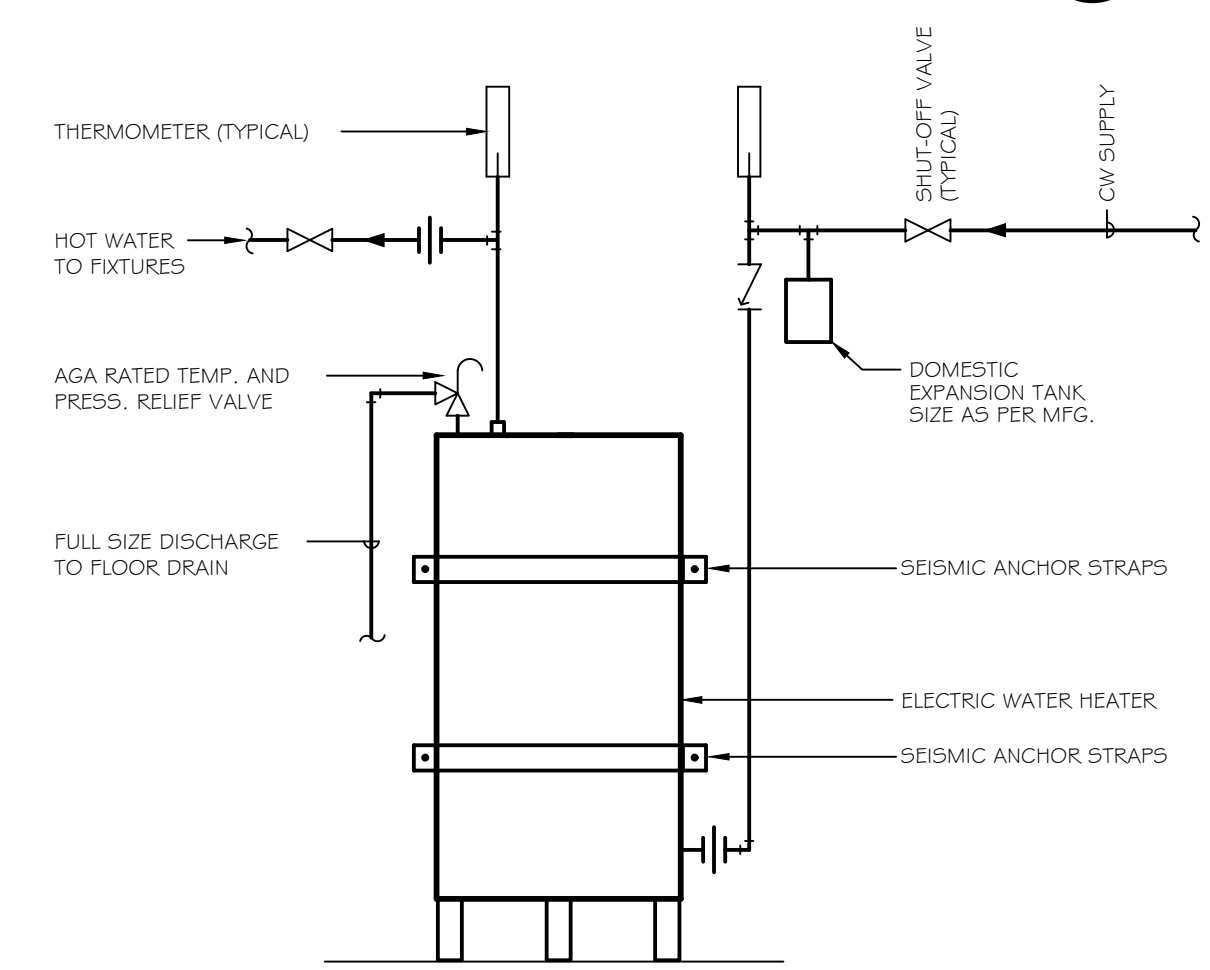
Mortensen Engineering, Inc.
 251 South 830 East
 Smithfield, Utah 84335
 (435) 770-5534



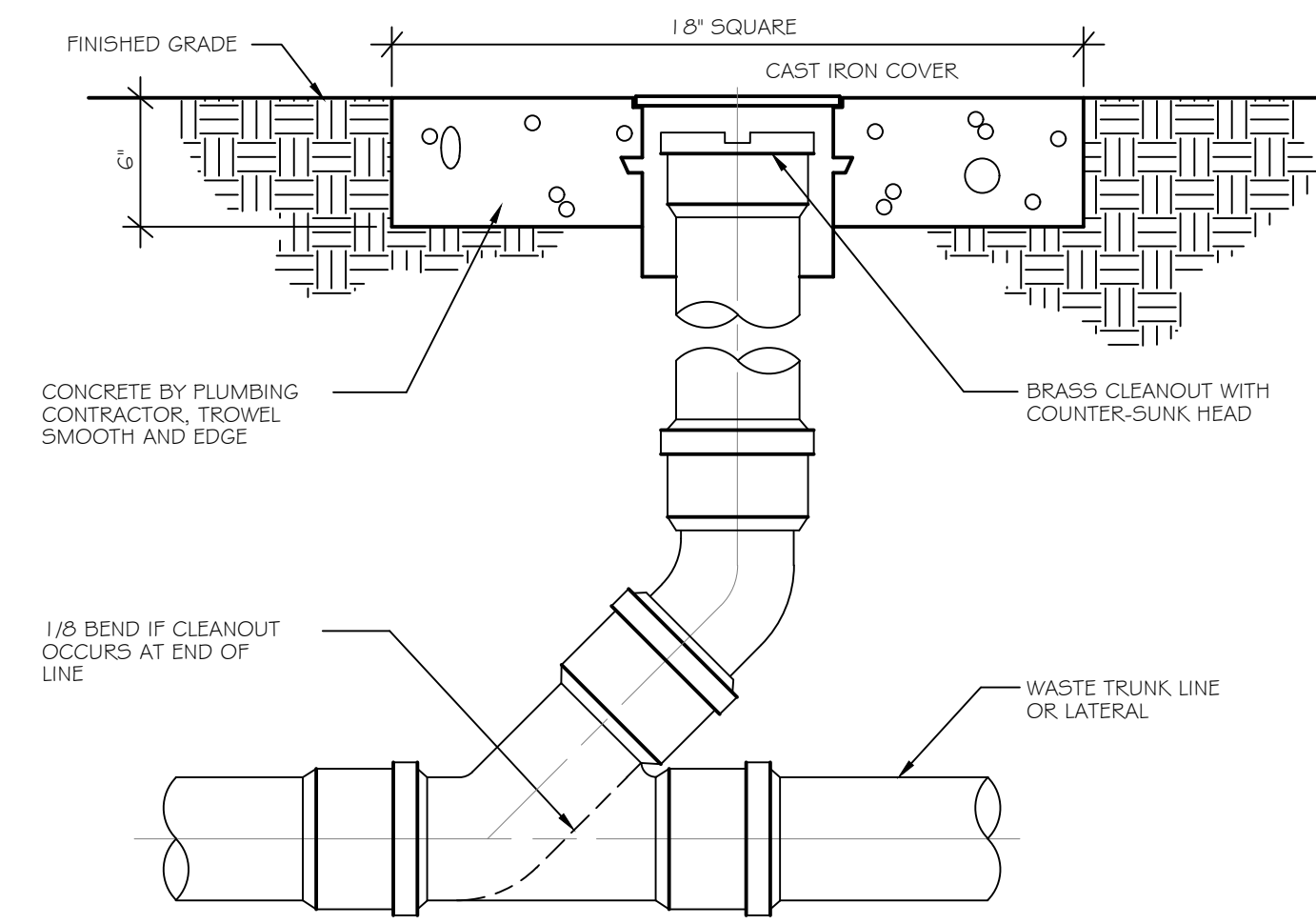
WALL CLEANOUT DETAIL (4)
 NOT TO SCALE (P-101)



VERTICAL WATER PRESSURE REDUCING STATION DETAIL (3)
 NOT TO SCALE (P-101)



ELECTRIC WATER HEATER DETAIL (2)
 NOT TO SCALE (P-101)



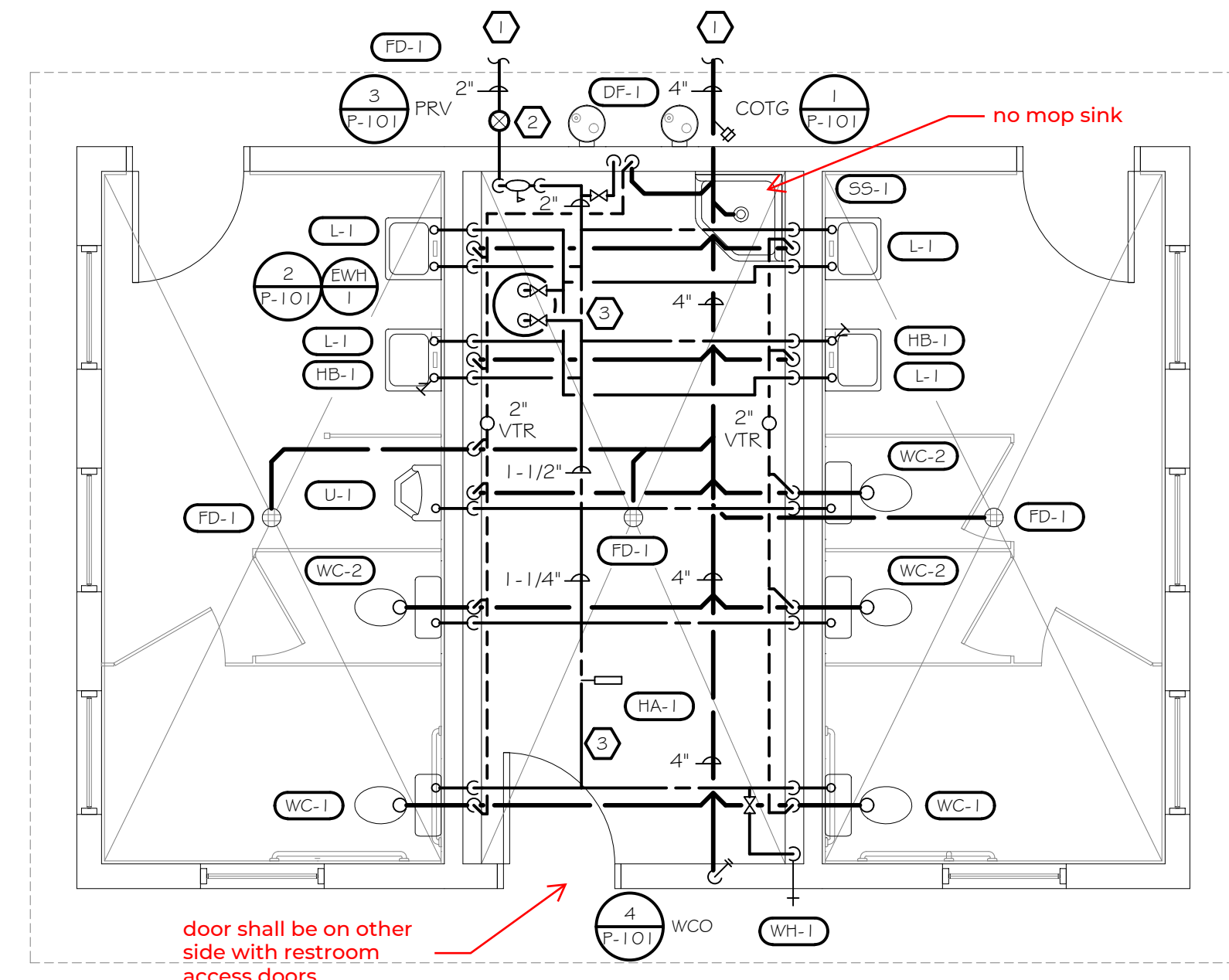
CLEAN OUT TO GRADE DETAIL (1)
 NOT TO SCALE (P-101)

PLUMBING FIXTURE SCHEDULE									
FIX. NO.	FIXTURE	TYPE	DESCRIPTION	WASTE	TRAP	VENT	HW	CW	
FD-1	FLOOR DRAIN	TOILET ROOMS	SMITH FIGURE 2010-BP CAST IRON BODY AND FLASHING COLLAR WITH PROTECTIVE CAP AND SQUARE NICKEL BRONZE ADJUSTABLE STRAINER HEAD WITH SECURED SQUARE HOLE GRATE. SQUARE FLOOR DRAIN TOP IN ALL TOILET ROOMS AND TILED LOCATIONS. ROUND FLOOR DRAIN TOP IN ALL CUSTODIAN & UTILITY AREAS.	2"	2"	1 1/2"	-	-	
HA-1	WATER HAMMER ARRESTOR	INLINE	JAY R. SMITH HYDROTRON WATER HAMMER ARRESTOR MODEL 5020, PDI SYMBOL "C", 1" THREADED NIPPLE, STAINLESS STEEL CONSTRUCTION, EXPANSION BELLOW TYPE.	-	-	-	-	-	1"
HB-1	HOSE BIBB	WALL MOUNTED	ACORN HOSE VALVE MODEL 8121-CP WITH WHEEL HANDLE, VACUUM BREAKER, POLISHED CHROME FINISH, AND 3/4" HOSE CONNECTION.	-	-	-	-	-	1/2"
L-1	ACCESSIBLE LAVATORY	ACCESSIBLE WALL HUNG RECTANGULAR	BRADLEY MODEL 6175 WALL MOUNTED STAINLESS STEEL SECURITY LAVATORY WITH 1500 WALL SLEEVE AND ALL REQUIRED MOUNTING HARDWARE. BRADLEY MODEL 900 INFRARED METERING FAUCET WITH SOLENOID VALVE AND REMOTE MOUNTED TRANSFORMER. (1) WITH DRAIN VALVE DOWNSTREAM OF SOLENOID FOR DRAIN DOWN.	1 1/2"	1 1/4"	1"	1/2"		
SS-1	SERVICE SINK	FLOOR MOUNTED CORNER INSTALLED SERVICE SINK	KOHLER K-6710 WHITBY WHITE ENAMELED CAST IRON CORNER SERVICE SINK WITH K-8940 COATED WIRE RIM GUARD, K-9146 STRAINER, AND DEEP SEAL TRAP. CHICAGO 897-CP WALL MOUNTED FAUCET WITH VACUUM BREAKER, PAIL HOOK, WALL BRACE, 3/8" HANDLES, 3/4" MALE HOSE OUTLET, # WALL HOOK.	3"	3"	1 1/2"	1/2"	1/2"	
U-1	URINAL	ACCESSIBLE WALL HUNG	BRADLEY MODEL 8000 WALL MOUNTED STAINLESS STEEL SECURITY URINAL AND NO. 1500 SERIES WALL SLEEVE FOR BLOCK WALL; ALL REQUIRED MOUNTING HARDWARE SHALL BE SUPPLIED WITH FIXTURE; SLOAN ELECTRONICALLY ACTIVATED SOLENOID FLUSH VALVE WITH REMOTE TRANSFORMER.	2"	-	1 1/2"	-	-	3/4"
WC-1	ACCESSIBLE WATER CLOSET	ACCESSIBLE WALL MOUNTED FLUSH VALVE	BRADLEY MODEL 7180 WALL MOUNTED STAINLESS STEEL SECURITY WATER CLOSET WITH INTEGRAL SEAT AND NO. 1500 SERIES WALL SLEEVE FOR BLOCK WALL; ALL REQUIRED MOUNTING HARDWARE SHALL BE SUPPLIED WITH FIXTURE; BRADLEY ELECTRONICALLY ACTIVATED SOLENOID FLUSH VALVE WITH REMOTE TRANSFORMER.	3"	-	1 1/2"	-	-	1"
WC-2	WATER CLOSET	WALL MOUNTED FLUSH VALVE	BRADLEY MODEL 7180 WALL MOUNTED STAINLESS STEEL SECURITY WATER CLOSET WITH INTEGRAL SEAT AND NO. 1500 SERIES WALL SLEEVE FOR BLOCK WALL; ALL REQUIRED MOUNTING HARDWARE SHALL BE SUPPLIED WITH FIXTURE; BRADLEY ELECTRONICALLY ACTIVATED SOLENOID FLUSH VALVE WITH REMOTE TRANSFORMER.	3"	-	1 1/2"	-	-	1"
WH-1	WALL HYDRANT	WALL MOUNTED	CHICAGO NONFREEZE AUTOMATIC DRAINING, ANTIBACKFLOW TYPE, KEY OPERATION WITH 3/4" HOSE CONNECTION.	-	-	-	-	-	1/2"

ELECTRIC DOMESTIC HOT WATER HEATER SCHEDULE							
SYMBOL	MANUFACTURERS AND MODEL NO.	TANK CAPACITY GALLONS	INPUT KW	VOLTS/ PHASE/ CYCLE	RECOVERY RATE GPH (1)	WATER TEMP IN/OUT	COMMENTS
EW-1	A.O. SMITH EIC-10	10	1.65	120/1/60	8	50/120	(1),(2)

(1) TANK TYPE ELECTRIC WATER HEATER.
 (2) ADJUSTABLE EXTERNAL TEMPERATURE CONTROL.

REFERENCE NOTES	
①	SEE SITE UTILITY PLAN FOR CONTINUATION.
②	STOP & WASTE VALVE.
③	SLOPE DOMESTIC WATER PIPING FOR DRAIN DOWN.



REVIEW - NOT FOR CONSTRUCTION

MARK	DATE	DESCRIPTION

PROJECT #: 816081
 DRAWN BY: JT
 CHECKED BY: LRM
 ISSUED: 07/03/18



PLUMBING PLAN & DETAILS

A	PLUMBING DETAILS & SCHEDULES	B	PLUMBING PLAN
NTS		1/4" = 1'-0"	