



DESIGN TEAM

LANDSCAPE

DESIGN WEST ARCHITECTS
 255 SOUTH 300 WEST - 795 NORTH 400 WEST
 LOGAN, UT 84321 - SALT LAKE CITY, UT 84103
 PHONE: 435.752.7031 - 801.539.8221
 EMAIL: kenia@designwestarchitects.com
 CONTACT: KENI ALTHOUSE, PLA

OWNER

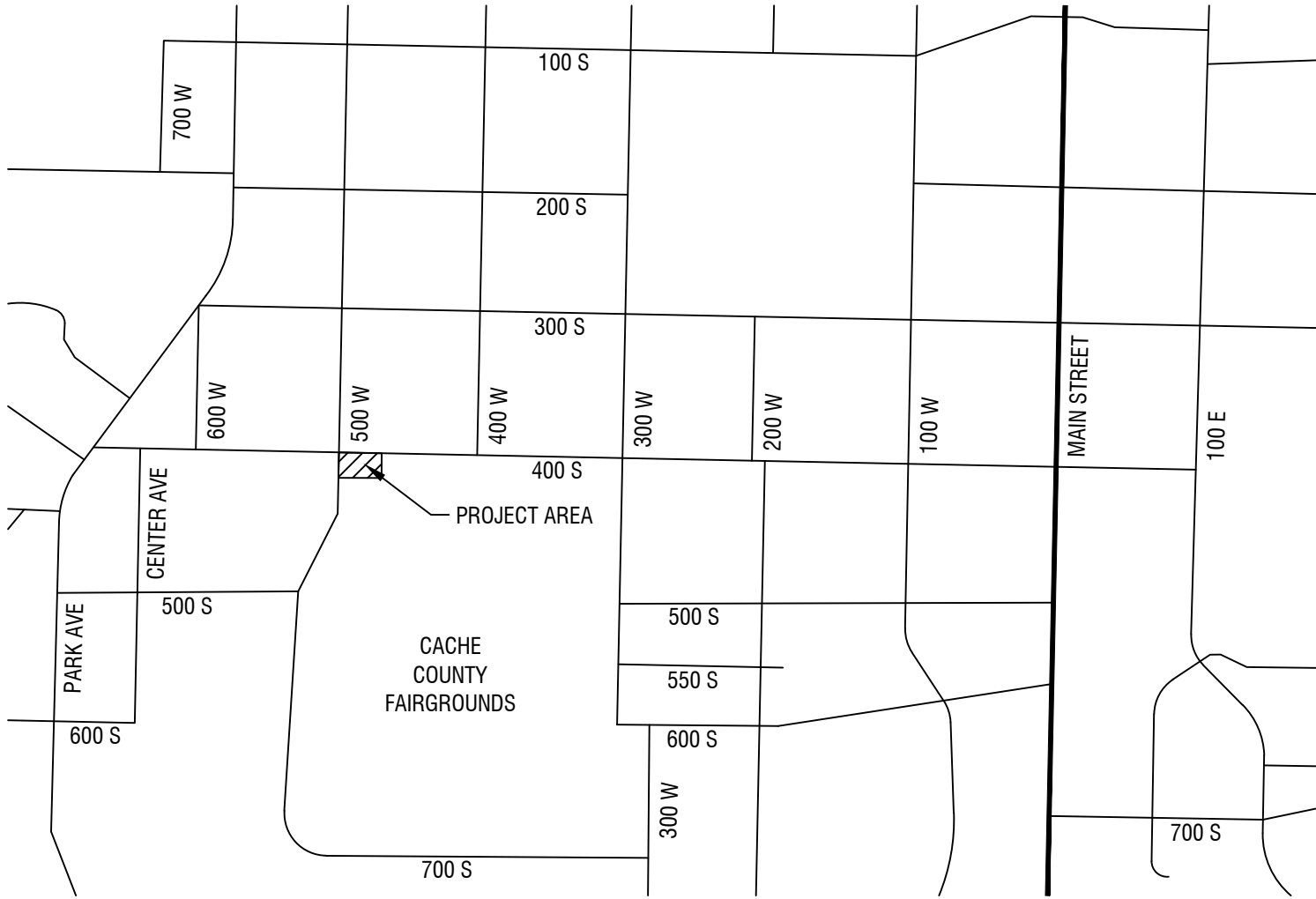
CACHE COUNTY FAIRGROUNDS
 179 N MAIN ST SUITE 312
 LOGAN, UT 84321
 PHONE: 435.755.1850
 EMAIL: bart.esplin@cachecounty.gov
 CONTACT: BART ESPLIN, FAIRGROUNDS MANAGER

INDEX OF DRAWINGS

G-001 COVER SHEET
 G-002 GENERAL SPECIFICATIONS
 G-003 GENERAL SPECIFICATIONS

LANDSCAPE
 C-001 SITE SPECIFICATIONS
 C-002 MONUMENT SIGN SPECIFICATIONS
 C-101 DEMOLITION PLAN AND SITE PLAN
 C-501 SITE DETAILS

VICINITY MAP



DESIGN WEST

LOGAN, UTAH
 (435) 752-7031
 SALT LAKE CITY, UTAH
 (801) 539-8221

CACHE COUNTY FAIRGROUNDS - MONUMENT SIGN

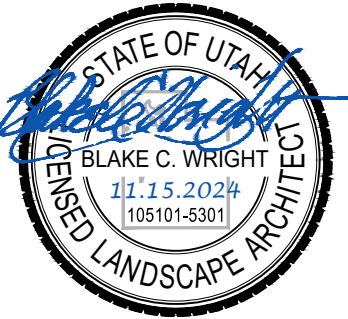
490 SOUTH 500 WEST
 LOGAN, UT 84321
 CACHE COUNTY

CACHE COUNTY FAIRGROUNDS - MONUMENT SIGN

490 SOUTH 500 WEST, LOGAN, UT 84321

MARK	DATE	DESCRIPTION

PROJECT #: 823278
 DRAWN BY: J. CLEMENTS
 CHECKED BY: B. WRIGHT
 ISSUED: 11.15.2024



CONSTRUCTION DOCUMENTS

COVER SHEET
 G-001

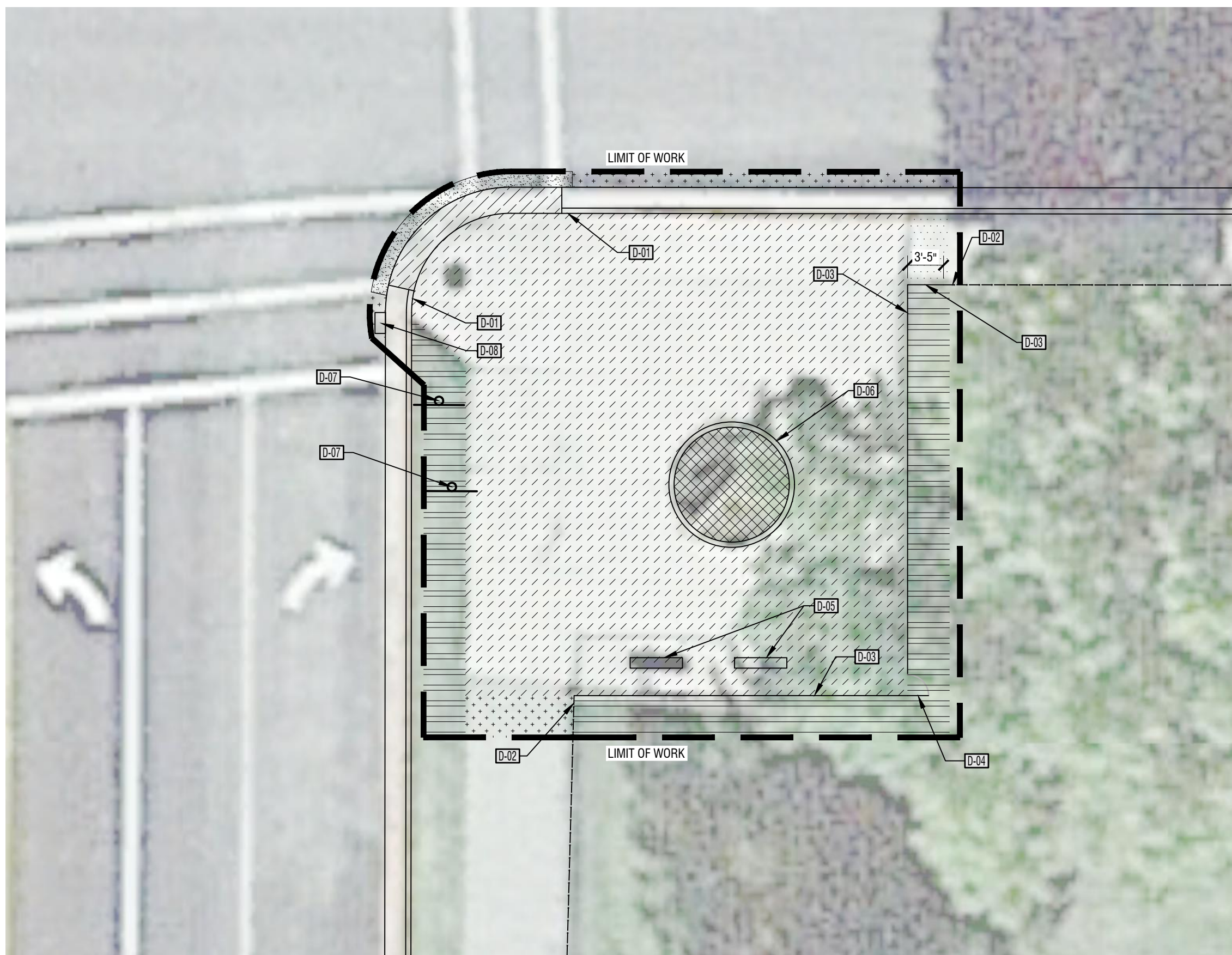
© COPYRIGHT DESIGN WEST ARCHITECTS 2024

DEMOLITION NOTES

- REMOVE OBSTRUCTIONS AND VEGETATION TO PERMIT INSTALLATION OF NEW CONSTRUCTION.
- FILL DEPRESSIONS CAUSED BY CLEARING AND GRUBBING OPERATIONS WITH SATISFACTORY SOIL MATERIALS IN HORIZONTAL LAYERS NOT EXCEEDING 8-INCH LOOSE DEPTH, AND COMPACT EACH LAYER TO A DENSITY EQUAL TO ADJACENT GROUND.
- STRIP SUITABLE TOPSOIL TO WHATEVER DEPTHS ARE ENCOUNTERED IN A MANNER TO PREVENT INTERMINGLING WITH UNDERLYING SUBSOIL OR OTHER WASTE MATERIALS.
- STOCKPILE SURPLUS TOPSOIL MATERIALS AWAY FROM EDGE OF EXCAVATIONS WITHOUT INTERMIXING WITH SUBSOIL. GRADE AND SHAPE STOCKPILES TO DRAIN SURFACE WATER. COVER TO PREVENT WINDBLOWN DUST. COORDINATE LOCATION WITH OWNER'S REPRESENTATIVE OR AT LOCATION SHOWN ON PLANS.
- REMOVE EXISTING ABOVE- AND BELOW-GRADE STRUCTURES AS INDICATED AND AS NECESSARY TO FACILITATE NEW CONSTRUCTION.
- AT ALL LOCATIONS WHERE EXISTING PAVEMENT ABUTS NEW CONSTRUCTION, THE EDGE OF THE EXISTING PAVEMENT SHALL BE AT THE CLOSEST JOINT OR SAW CUT TO A CLEAN SMOOTH EDGE.
- PROTECT EXISTING WALKS, DRIVES, CURBS, EXISTING VEGETATION, ETC. THAT ARE TO REMAIN. REPAIR ANY DAMAGES THAT MAY OCCUR TO EXISTING ITEMS TO BE PROTECTED.
- ALL ITEMS TO BE REMOVED FROM THE PROJECT AND EXCESS MATERIALS SHALL BE LEGALLY DISPOSED OF OFFSITE BY THE CONTRACTOR, UNLESS INDICATED TO BE RETURNED TO THE OWNER.
- CONTINUOUSLY CLEAN-UP AND REMOVE WASTE MATERIALS FROM SITE. DO NOT ALLOW MATERIALS TO ACCUMULATE ON SITE.
- DO NOT BURN OR BURY MATERIALS ON SITE. LEAVE SITE IN CLEAN CONDITION.

DEMOLITION PLAN LEGEND

SYMBOL	DESCRIPTION	QTY
D-01	EXISTING CURB AND GUTTER - preserve and protect	
D-02	EXISTING CHAINLINK FENCE - preserve and protect	
D-03	REMOVE AND PRESERVE CHAINLINK FENCE - remove, preserve, store and protect for future reuse	
D-04	REMOVE AND PRESERVE CHAINLINK GATE - return to owner	
D-05	REMOVE AND PRESERVE BENCH - return to owner	
D-06	REMOVE CURB - clear and grub	
D-07	EXISTING SIGN - preserve and protect	
D-08	EXISTING STORM DRAIN - preserve and protect	
[Pattern]	REMOVE ASPHALT - Logan City to remove	36 sf
[Pattern]	REMOVE CONCRETE - Logan City to remove	1,991 sf
[Pattern]	REMOVE CONCRETE GUTTER - Logan City to remove	48 sf
[Pattern]	REMOVE LANDSCAPE - clear and grub	95 sf
[Pattern]	EXISTING LANDSCAPE AND IRRIGATION - preserve and protect	456 sf
[Pattern]	EXISTING CONCRETE - preserve and protect	27 sf
[Pattern]	EXISTING ASPHALT - preserve and protect	102 sf



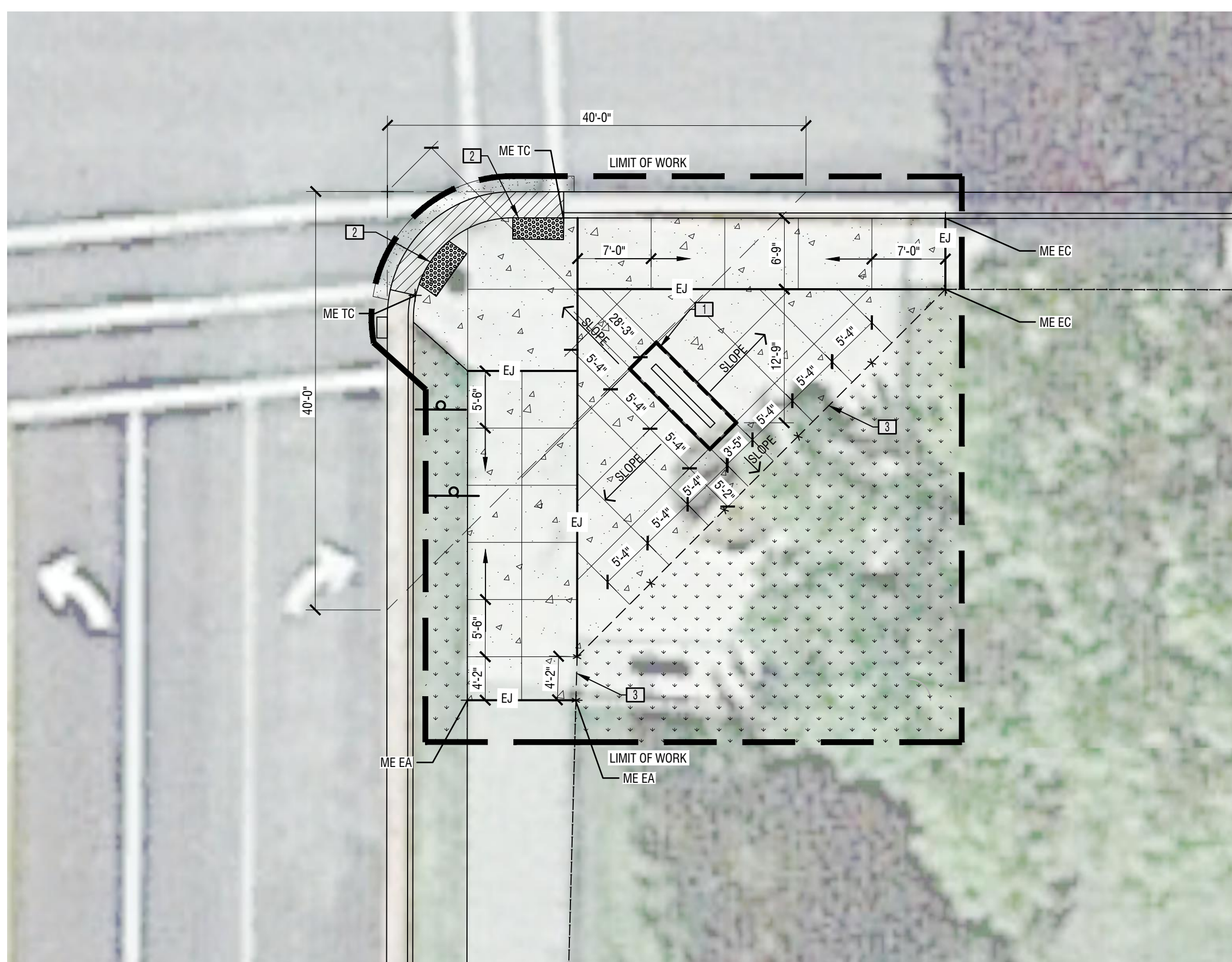
DEMOLITION PLAN

GENERAL NOTES

- THE CONTRACTOR SHALL INSPECT THE SITE TO BE FULLY AWARE OF ALL PERTINENT EXISTING CONDITIONS PRIOR TO SUBMITTING BID OR PROPOSAL.
- NO WORK IS TO BEGIN UNTIL NECESSARY PERMITS HAVE BEEN OBTAINED. IT IS THE CONTRACTOR'S RESPONSIBILITY TO OBTAIN AND PAY FOR ALL PERMITS.
- PRIOR TO BEGINNING CONSTRUCTION, CONTRACTOR SHALL MEET WITH THE OWNER'S REPRESENTATIVE TO DETERMINE METHOD OF MAINTAINING PUBLIC ACCESS TO THE BUILDING DURING CONSTRUCTION. CONTRACTOR SHALL MAINTAIN APPROVED ACCESS TO THE BUILDING THROUGHOUT THE DURATION OF CONSTRUCTION AND SHALL PROVIDE ALL TEMPORARY RAMPS, BARRIERS, ETC. AS REQUIRED TO MAINTAIN PUBLIC SAFETY.
- PRIOR TO THE COMMENCEMENT OF ANY WORK, THE CONTRACTOR SHALL VERIFY THE LOCATION OF ALL UNDERGROUND UTILITIES THAT MAY BE AFFECTED BY HIS WORK. THE CONTRACTOR SHALL PROTECT THOSE UTILITIES THAT ARE TO REMAIN AND BE RESPONSIBLE FOR THE REPAIR OF DAMAGES TO SUCH UTILITIES.
- THE CONTRACTOR SHALL NOTIFY ALL UTILITY COMPANIES WHEN CONSTRUCTION WORK BEGINS NEAR ANY UTILITY LINES AND ARRANGE FOR A UTILITY REPRESENTATIVE TO BE PRESENT IF THE CONTRACTOR'S CLOSE OPERATIONS COULD CREATE A HAZARDOUS CONDITION.
- THE CONTRACTOR SHALL PROTECT EXISTING WALKS, DRIVES, CURBS, ETC. THAT ARE TO REMAIN AND SHALL REPAIR ANY DAMAGE THAT MAY RESULT FROM THE WORK.
- THE CONTRACTOR HAS THE RESPONSIBILITY OF VERIFYING ALL GRADES, ELEVATIONS, DIMENSIONS, MEASUREMENTS, CORNERS, CURBS AND ANGLES FOR WORK TO BE PERFORMED WITHIN THIS CONTRACT. REPORT ANY DISCREPANCIES BETWEEN PLANS AND ACTUAL CONDITION TO THE OWNER'S REPRESENTATIVE IMMEDIATELY.
- THE CONTRACTOR IS RESPONSIBLE FOR ANY UNAUTHORIZED DAMAGE INSIDE AND OUTSIDE THE LIMIT OF WORK LINE DUE TO CONSTRUCTION OPERATIONS AND SHALL RESTORE DAMAGED AREAS TO ORIGINAL CONDITION AT NO COST.

SITE PLAN LEGEND

SYMBOL	DESCRIPTION	QTY	DETAIL
[1]	MONUMENT SIGN	A4/C-501	
[2]	CORNER CURB RAMP WITH DETECTABLE WARNING SURFACES - detectable warning surface supplied by Logan City, installed by contractor	D4/C-501	
[3]	6' TALL CHAINLINK FENCE - reuse existing where possible	D1/C-501	
[Pattern]	CONCRETE - match finish of surrounding concrete	1,348 sf	A3/C-501
[Pattern]	TURF GRASS - 3 cultivar kentucky bluegrass blend, match species of adjacent sod, patch and repair as needed	1,086 sf	A1/C-501
[Pattern]	CONCRETE GUTTER	48 sf	D3/C-501
[Pattern]	ASPHALT - installation and repair by Logan City	36 sf	



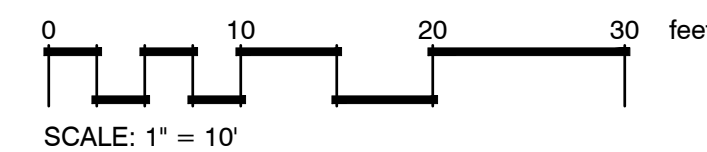
SITE PLAN

GRADING NOTES

- CONTRACTOR SHALL BE RESPONSIBLE FOR ON-SITE VERIFICATION OF EXISTING CONDITIONS PRIOR TO COMMENCEMENT OF ANY WORK AND IMMEDIATELY REPORT ANY DISCREPANCIES TO THE ARCHITECT.
- PRIOR TO THE COMMENCEMENT OF ANY WORK, THE CONTRACTOR SHALL VERIFY THE LOCATION OF ALL UNDERGROUND UTILITIES THAT MAY BE AFFECTED BY HIS WORK. THE CONTRACTOR SHALL PROTECT THOSE UTILITIES THAT ARE TO REMAIN AND BE RESPONSIBLE FOR THE REPAIR OF DAMAGES TO SUCH UTILITIES.
- THE CONTRACTOR SHALL NOTIFY ALL UTILITIES WHEN CONSTRUCTION WORK BEGINS NEAR ANY UTILITY LINES AND ARRANGE FOR A UTILITY REPRESENTATIVE BE PRESENT IF THE CONTRACTOR'S CLOSE OPERATIONS COULD CREATE A HAZARDOUS CONDITION.
- CUT AND CAP UTILITY LINES TO BE ABANDONED AS REQUIRED. REMOVE ALL UTILITIES NECESSARY FOR NEW CONSTRUCTION AND COORDINATE WITH OTHER DISCIPLINES AND UTILITY PURVEYORS.
- CONTRACTOR SHALL FIELD LOCATE ALL EXISTING IRRIGATION MAINLINE AND PRESERVE AND PROTECT THE LINES OR REROUTE THEM AS NECESSARY. COORDINATE WITH GROUNDS PERSONNEL.
- CONTRACTOR SHALL REPAIR ALL DAMAGES CAUSED BY OPERATIONS (WHICH OCCUR ON OR OFF SITE) TO THE ARCHITECT'S AND OWNER'S SATISFACTION.
- CONTRACTOR SHALL PATCH OR REPLACE EXISTING ASPHALT, CONCRETE, LANDSCAPING, ETC. AS REQUIRED WHERE NEW CONSTRUCTION MEETS EXISTING.
- PROVIDE SMOOTH GRADE TRANSITION IN ALL LANDSCAPE AREAS AND BETWEEN NEW EARTH WORK AREA AND EXISTING.
- THE ELEVATION OF THE SUB-GRADE SHALL BE SET SO THE FINAL GRADE CAN BE MET BY THE ADDITION OF THE SPECIFIED DEPTH OF TOP SOIL OR PAVEMENT CROSS SECTION. PROVIDE TWELVE INCHES OF TOP SOIL IN PLANTER BEDS AND FOUR INCHES IN LAWN AREAS.
- CURB RAMPS ARE NOT TO EXCEED 1:12 SLOPE. LANDINGS AND TOP AND BOTTOM OF RAMPS ARE TO BE A MAXIMUM OF TWO PERCENT IN ANY DIRECTION FOR AN AREA OF FIVE-FEET BY FIVE-FEET.
- WALKS SHALL NOT EXCEED FIVE PERCENT SLOPE IN THE DIRECTION OF TRAVEL. THE CROSS SLOPE ON WALKS SHALL NOT EXCEED TWO PERCENT.
- SURVEY NOT AVAILABLE. CONTRACTOR TO SLOPE CONCRETE TO DRAIN AWAY FROM SIGN AT 2% MAX. MATCH EXISTING GRADES AT LIMIT OF WORK LINE AS CLOSE AS POSSIBLE. SEE OTHER NOTES REGARDING SLOPES OF CURB RAMPS AND WALKS.

GRADING LEGEND

CALLOUT	DEFINITION
EC	EDGE OF CONCRETE
EA	EDGE OF ASPHALT
TC	TOP OF CURB
ME	MATCH EXISTING

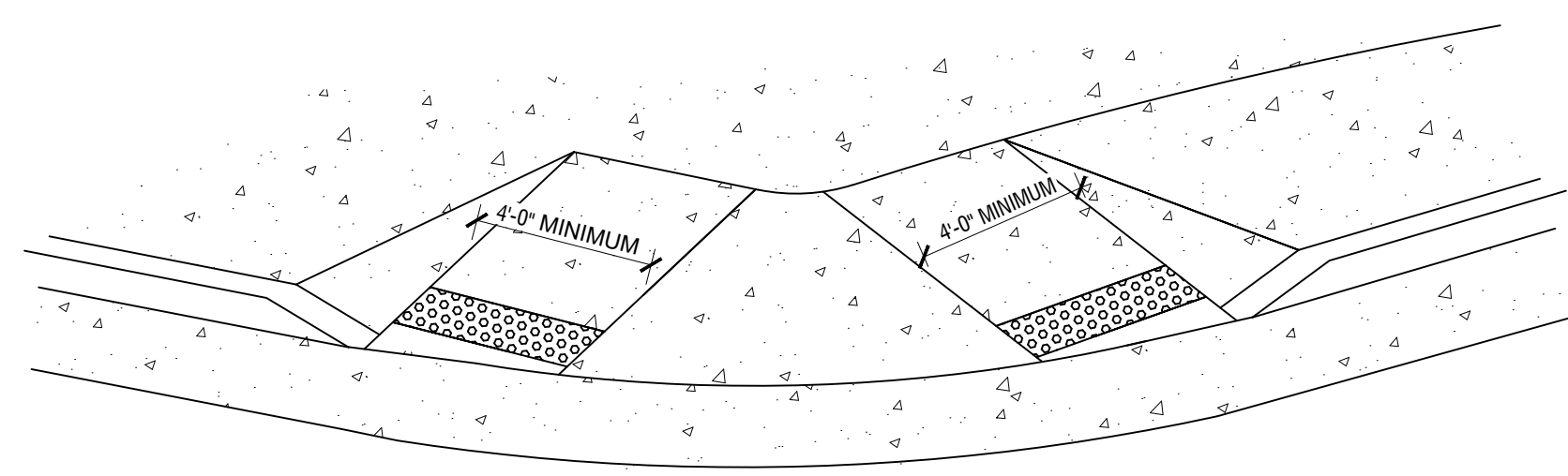


D

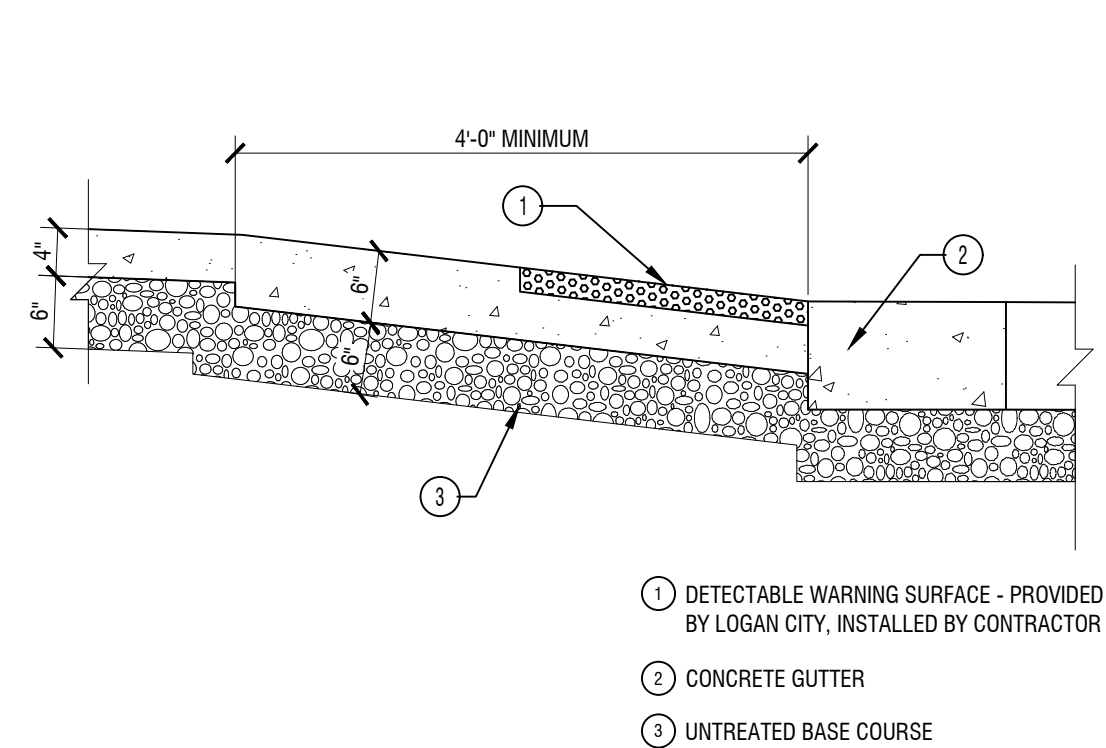
C

B

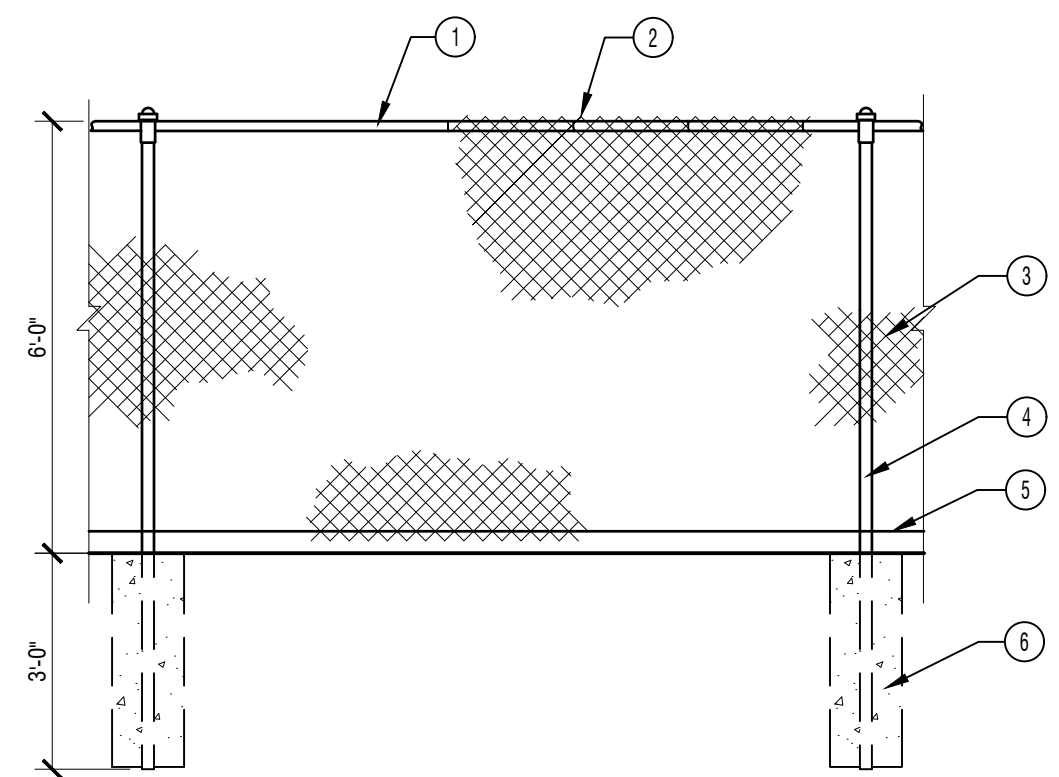
A



D4 CORNER CURB CUT
1/4" = 1'-0"



D3 CORNER CURB CUT MATERIALS
3/4" = 1'-0"



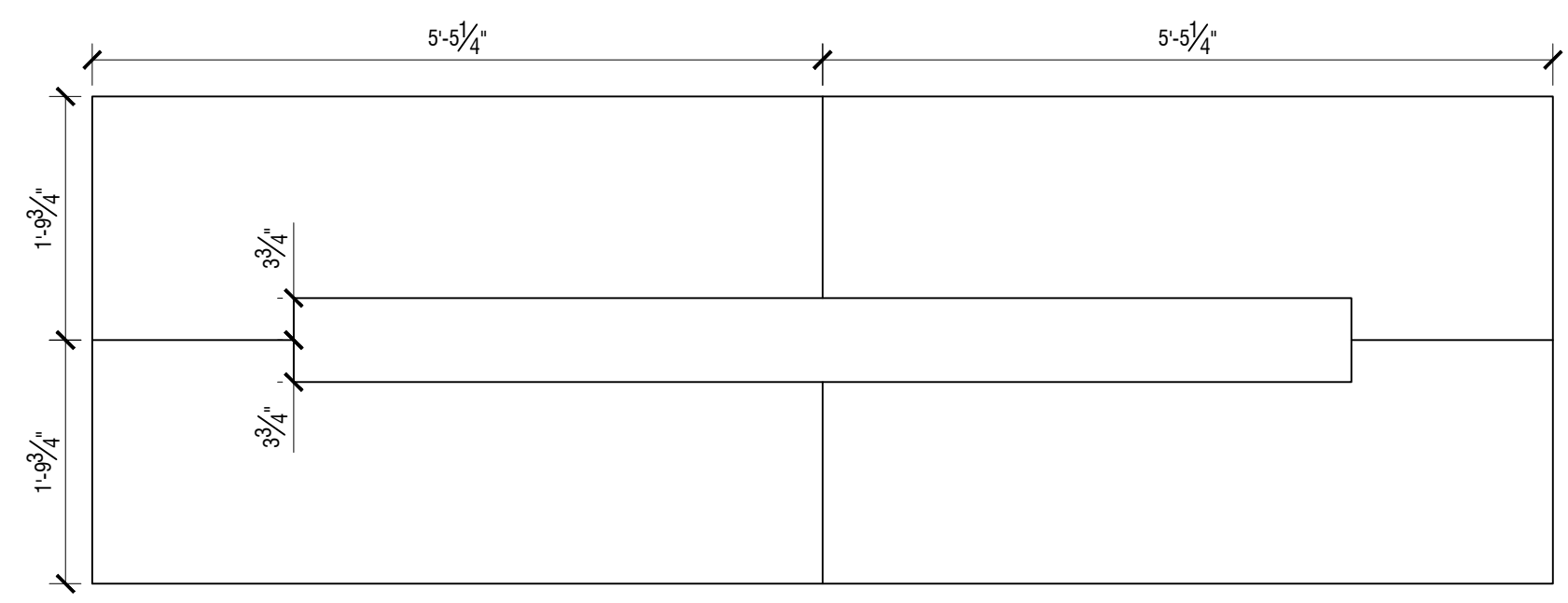
D1 CHAIN LINK FENCE
3/8" = 1'-0"

- 1 1-5/8" TOP RAIL
 - 2 KNUCKLED SELVAGE TOP & BOTTOM
 - 3 CHAIN LINK FABRIC
 - 4 1-7/8" DIA. LINE POSTS. PROVIDE AND INSTALL TENSION BAR ATTACHED TO CORNER AND END POST WITH TENSION BANDS WHERE OCCURS
 - 5 TENSION WIRE
 - 6 12" DIA. X 36" DEEP CONCRETE FOOTINGS ON 4" BASE COURSE
- NOTE: REUSE EXISTING CHAIN LINK FENCE WHERE POSSIBLE

- 1 DETECTABLE WARNING SURFACE - PROVIDED BY LOGAN CITY, INSTALLED BY CONTRACTOR
- 2 CONCRETE GUTTER
- 3 UNTREATED BASE COURSE

P-8-CAC-CACH-11

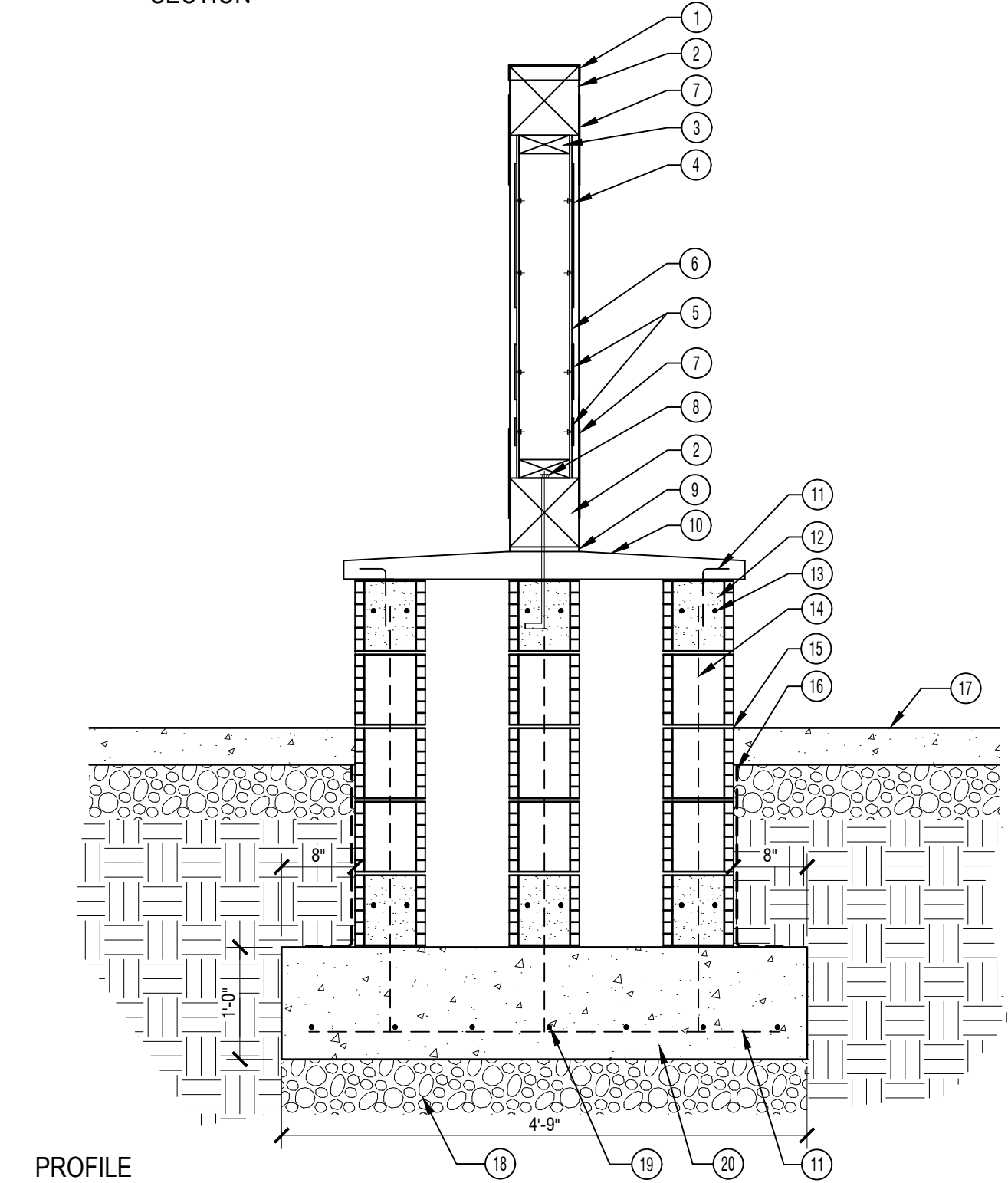
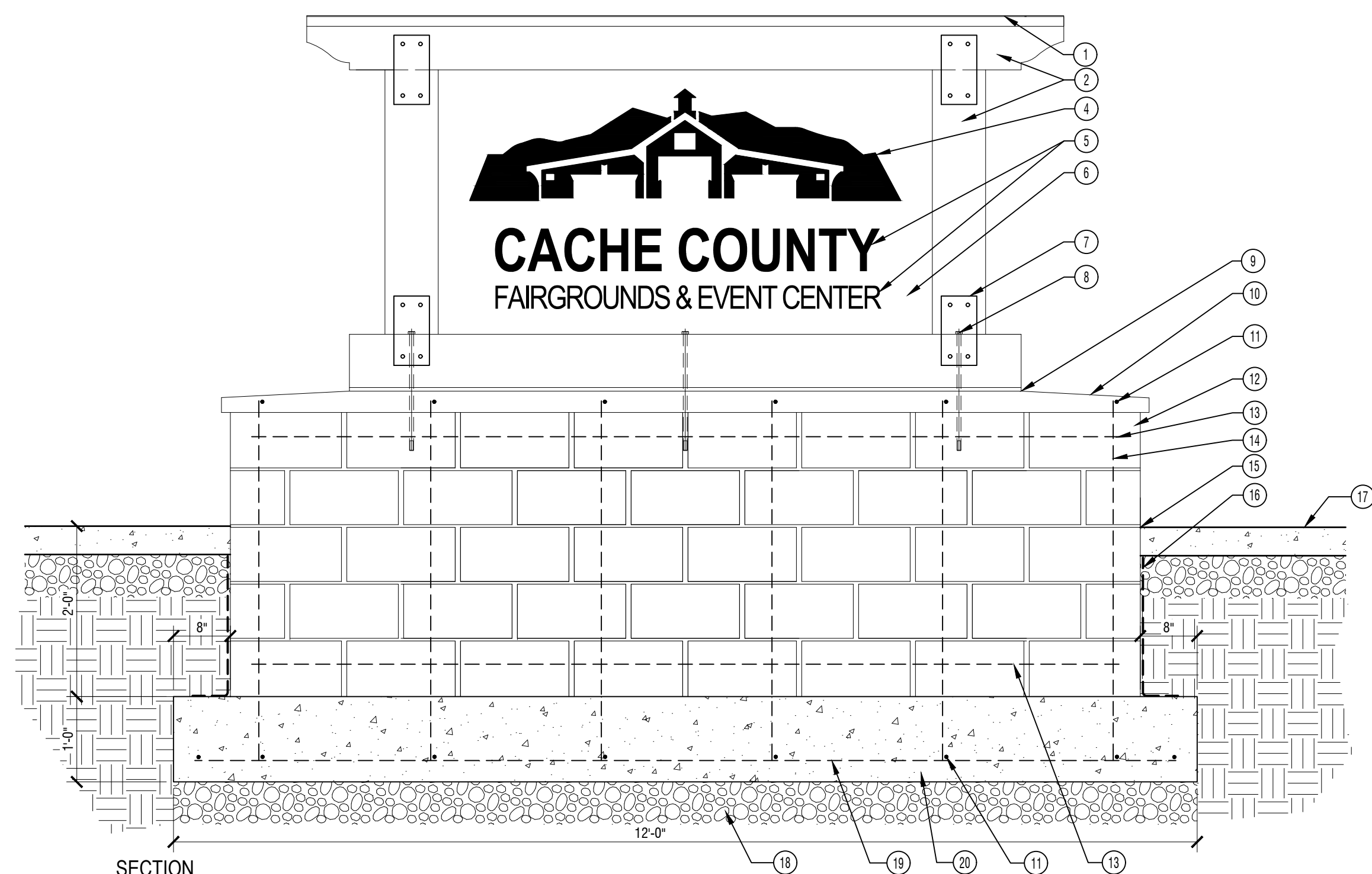
P-8-CAC-CACH-17



C1 PRE-CAST CONCRETE CAP DIMENSION PLAN
3/4" = 1'-0"



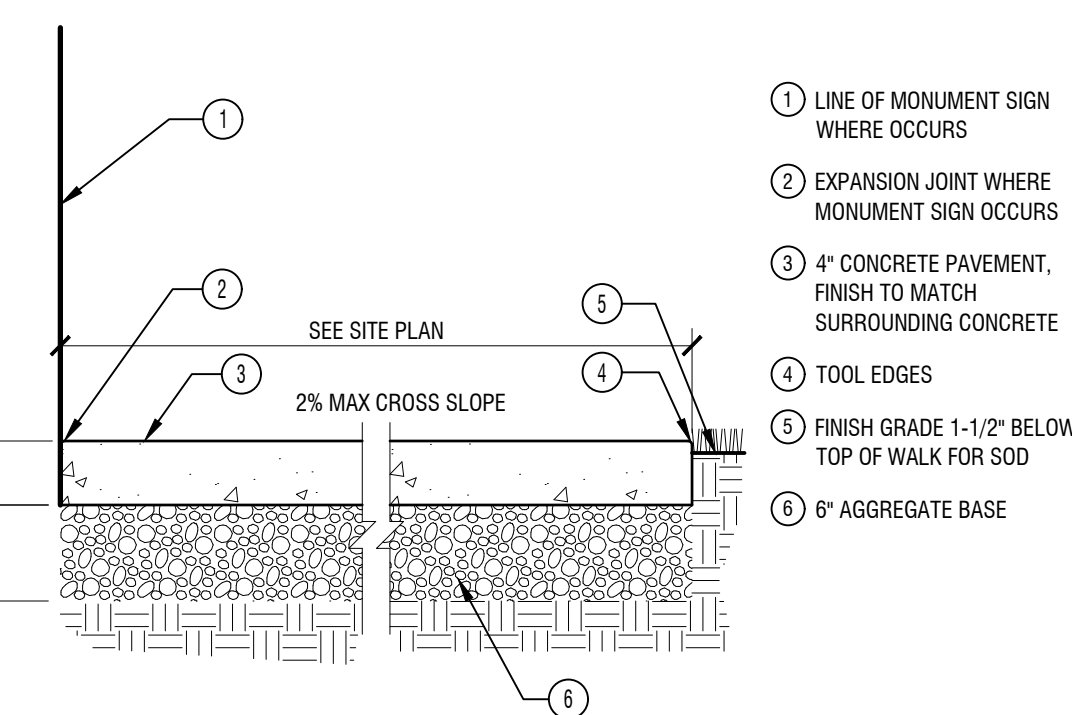
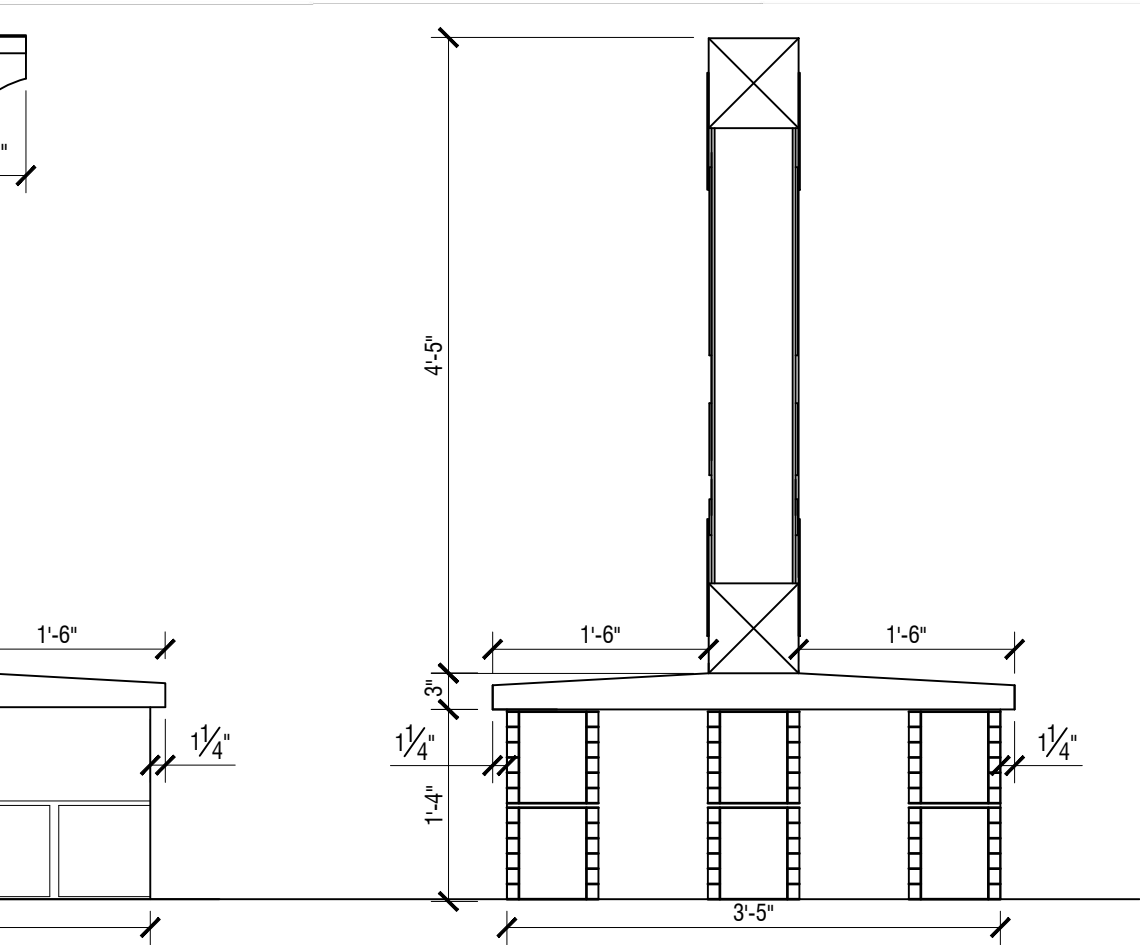
C2 MONUMENT SIGN RENDERING
3/4" = 1'-0"



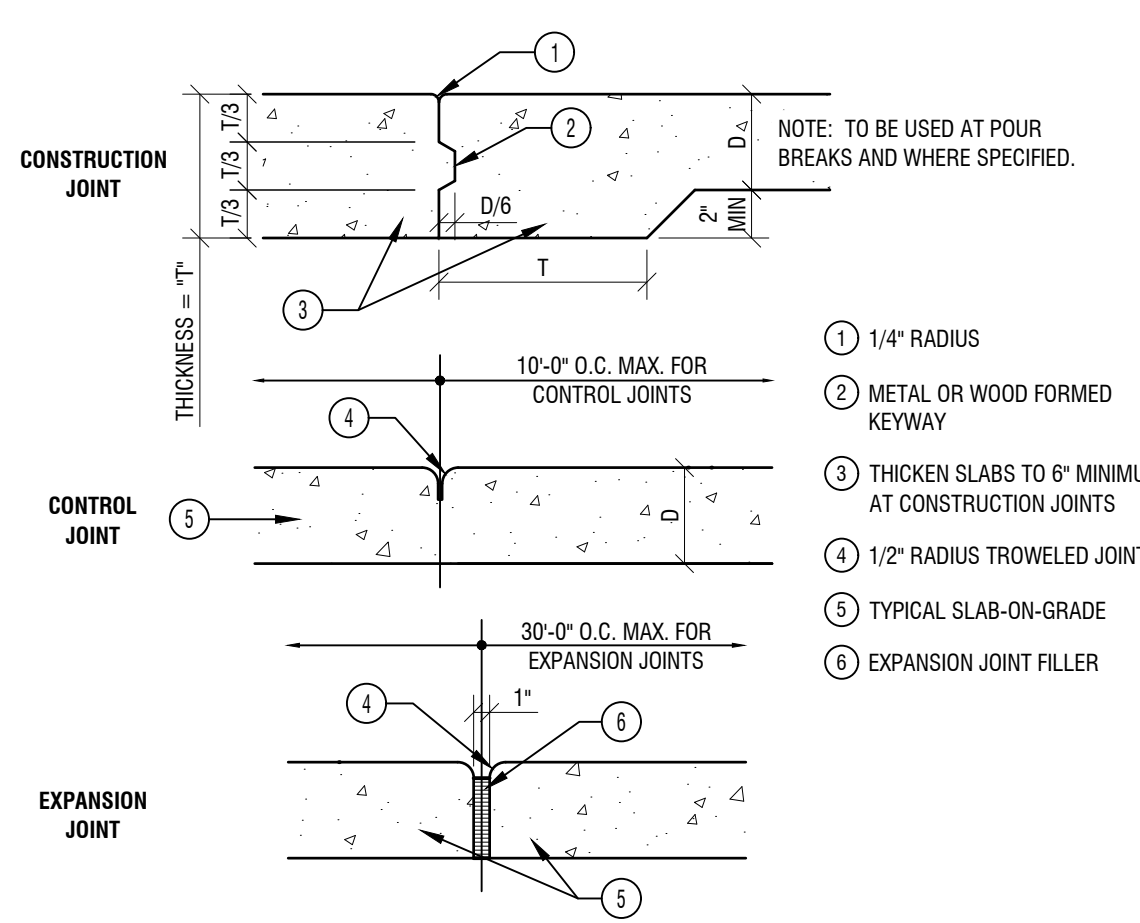
- 1 PREFABRICATED ALUMINUM CAP WITH 1 1/2" COVERAGE
 - 2 8" x 8" ROUGH-SAWN CEDAR
 - 3 2" x 6" x 5'-8" LUMBER
 - 4 3/16" THICK ALUMINUM CUTOUT POWDER COATED WHITE CAST WITH 10/32" THREADED STUDS AND ANCHORED TO PANEL WITH NUTS ON BACKSIDE OF PANEL
 - 5 3/16" THICK ALUMINUM LETTERS POWDER COATED WHITE CAST WITH 10/32" THREADED STUDS AND ANCHORED TO PANEL WITH NUTS ON BACKSIDE OF PANEL
 - 6 3/16" ALUMINUM PANEL POWDER COATED GREY
 - 7 3-3/4" x 5" 12 GAUGE BLACK POWDER COATED FLAT STRAP WITH LAG SCREWS
 - 8 18" LONG L-BOLT
 - 9 1/2" STAND-OFFS
 - 10 PRECAST CAP SEALED WITH DRIP EDGE BOTH SIDES. PLASTERED AND PLACED ON TOP OF CMU. SEE C1/C-501
 - 11 #4 REBAR AT 24" O.C. (HORIZONTAL)
 - 12 SPLIT-FACE CMU 8"x8"x16" TO MATCH EXISTING BUILDING. FINISH BELOW GRADE TO BE STANDARD BLOCK
 - 13 #2 #4 REBAR IN TOP AND BOTTOM COURSES - REINF. BOND BEAMS TOP AND BOTTOM
 - 14 #4 REBAR AT 24" O.C. ONE WAY, 9" O.C. ONE WAY.
 - 15 EXPANSION JOINT AT MONUMENT SIGN
 - 16 BITUMINOUS DAMPROOFING AT ALL BACKFILLED LOCATIONS
 - 17 FINISH GRADE
 - 18 6" COMPACTED AGGREGATE BASE
 - 19 #4 REBAR AT 9" O.C. (HORIZONTAL)
 - 20 CONCRETE FOOTING
- NOTE: SEE B1/C-501 AND C2/C-501 FOR MORE INFORMATION

PROFILE

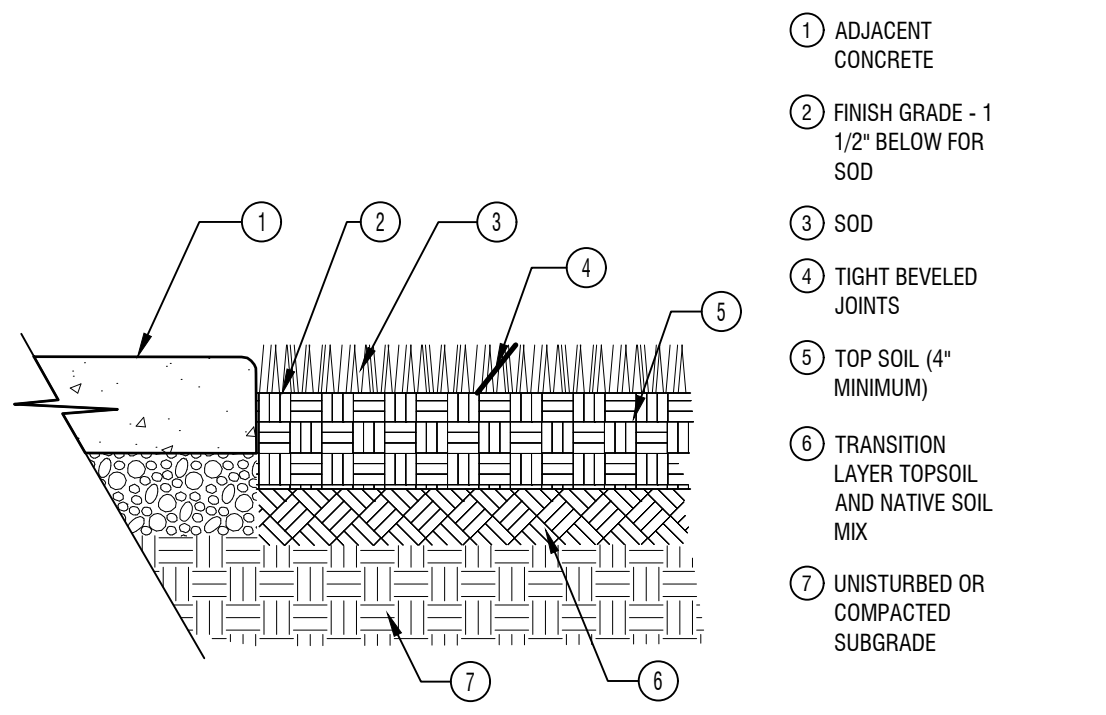
A4 MONUMENT SIGN FOOTING
3/4" = 1'-0"



A3 CONCRETE SURFACE
1" = 1'-0"

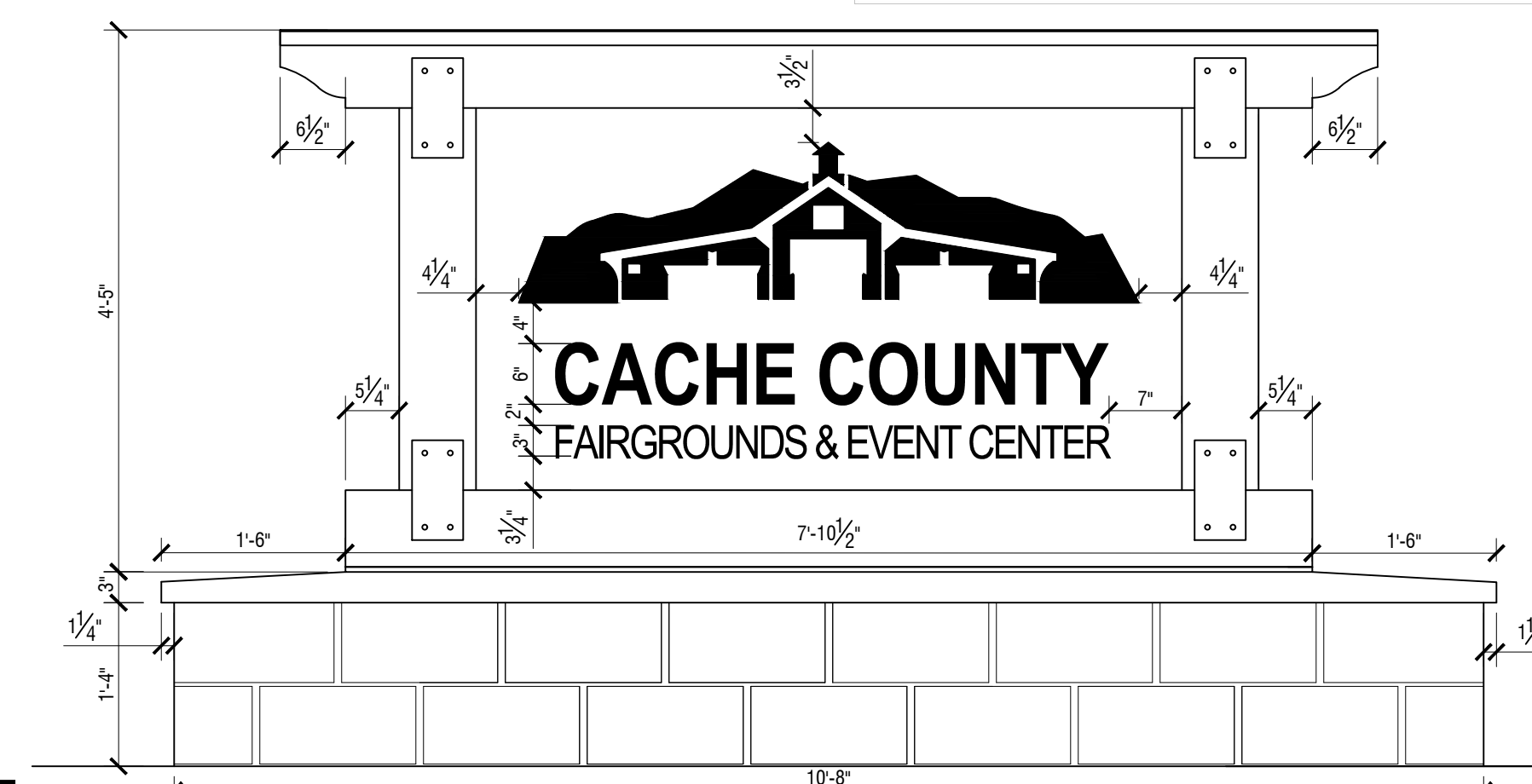


A2 JOINT SECTIONS
1 1/2" = 1'-0"



A1 SOD PLANTING
1 1/2" = 1'-0"

B1 MONUMENT SIGN LAYOUT
3/4" = 1'-0"



D1 CHAIN LINK FENCE
3/8" = 1'-0"

D3 CORNER CURB CUT MATERIALS
3/4" = 1'-0"

D4 CORNER CURB CUT
1/4" = 1'-0"

C1 PRE-CAST CONCRETE CAP DIMENSION PLAN
3/4" = 1'-0"

C2 MONUMENT SIGN RENDERING
3/4" = 1'-0"

B1 MONUMENT SIGN LAYOUT
3/4" = 1'-0"

A3 CONCRETE SURFACE
1" = 1'-0"

A2 JOINT SECTIONS
1 1/2" = 1'-0"

A1 SOD PLANTING
1 1/2" = 1'-0"