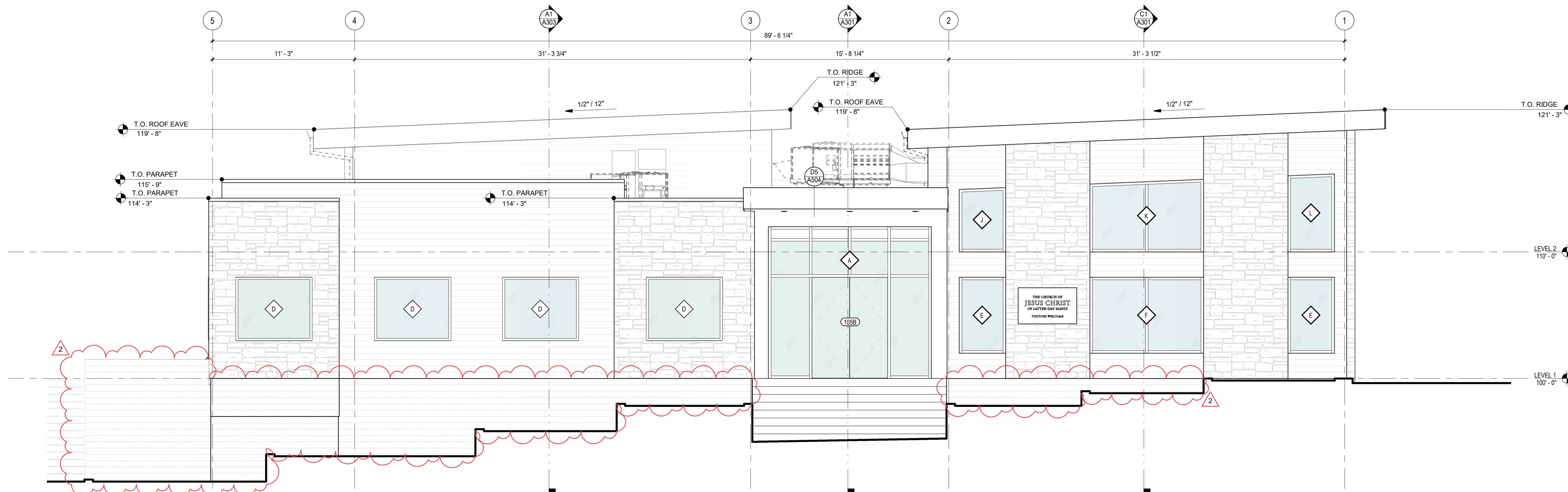
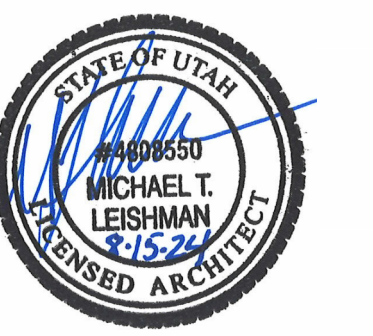


C1 NORTH ELEVATION
SCALE: 1/4" = 1'-0"



A1 EAST ELEVATION
SCALE: 1/4" = 1'-0"

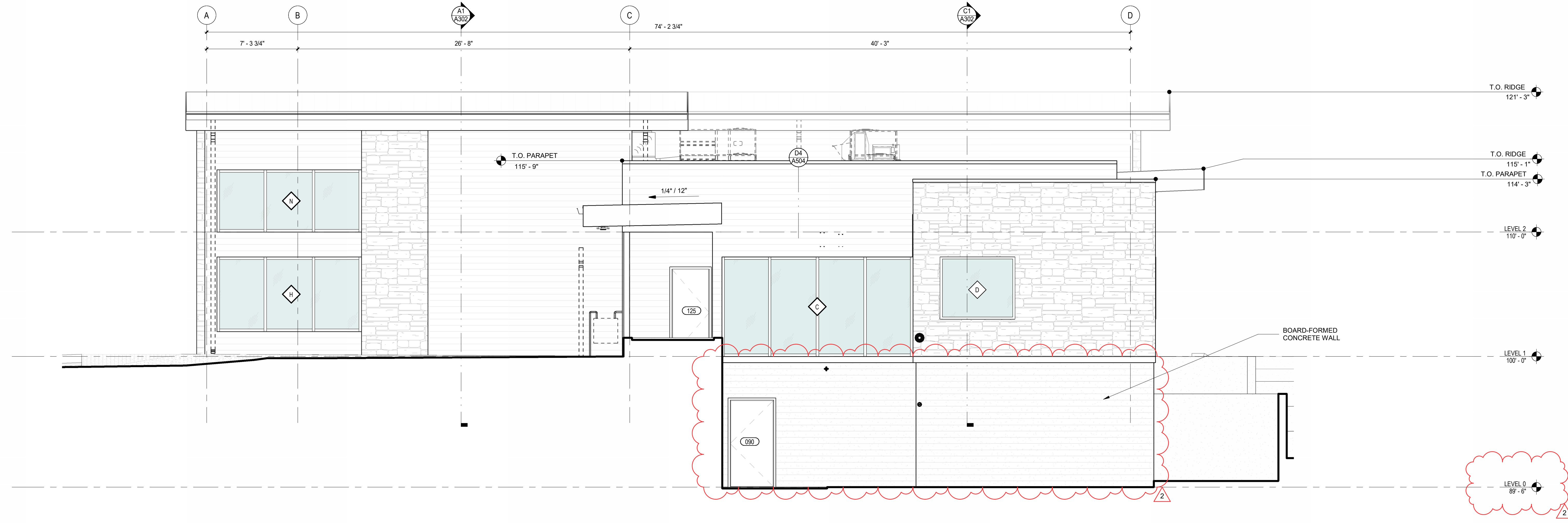
LOGAN UT SR SEMINARY
110 W. 100 S. Logan, UT 84321 - 5022453
The Church of Jesus Christ of Latter-Day Saints
CONSTRUCTION DOCUMENTS - 08.15.24



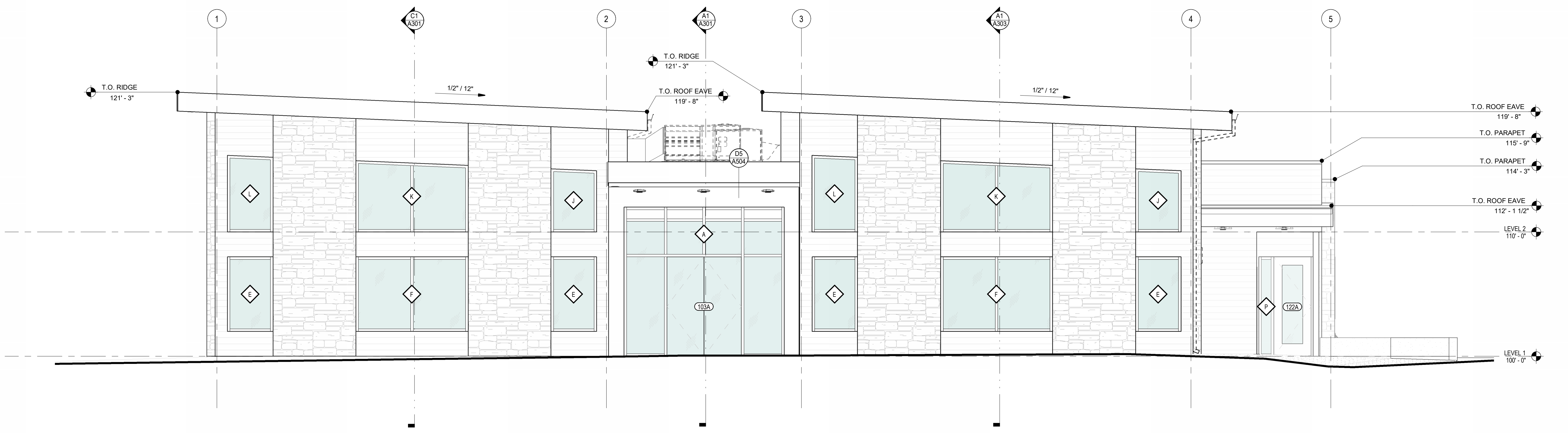
DATE: 12/03/24
REVISION: Addendum #2

PROJECT NUMBER: 24003

BUILDING ELEVATIONS



C1 SOUTH ELEVATION
SCALE: 1/4" = 1'-0"



A1 WEST ELEVATION
SCALE: 1/4" = 1'-0"

LOGAN UT SR SEMINARY
110 W. 100 S. Logan, UT 84321 - 5022453
The Church of Jesus Christ of Latter-Day Saints
CONSTRUCTION DOCUMENTS - 08.15.24

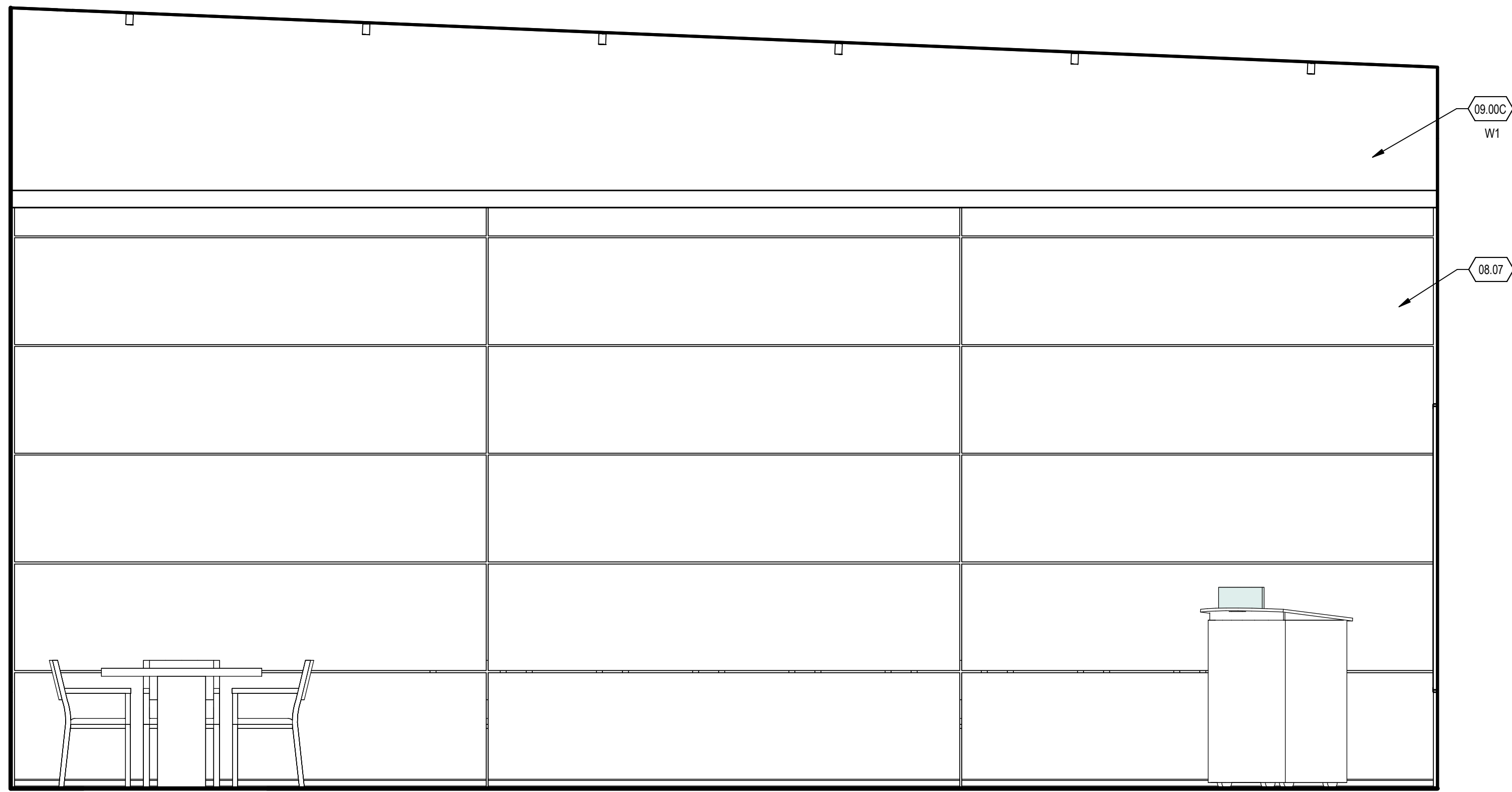


DATE: 12/03/24
REVISION: Addendum #2

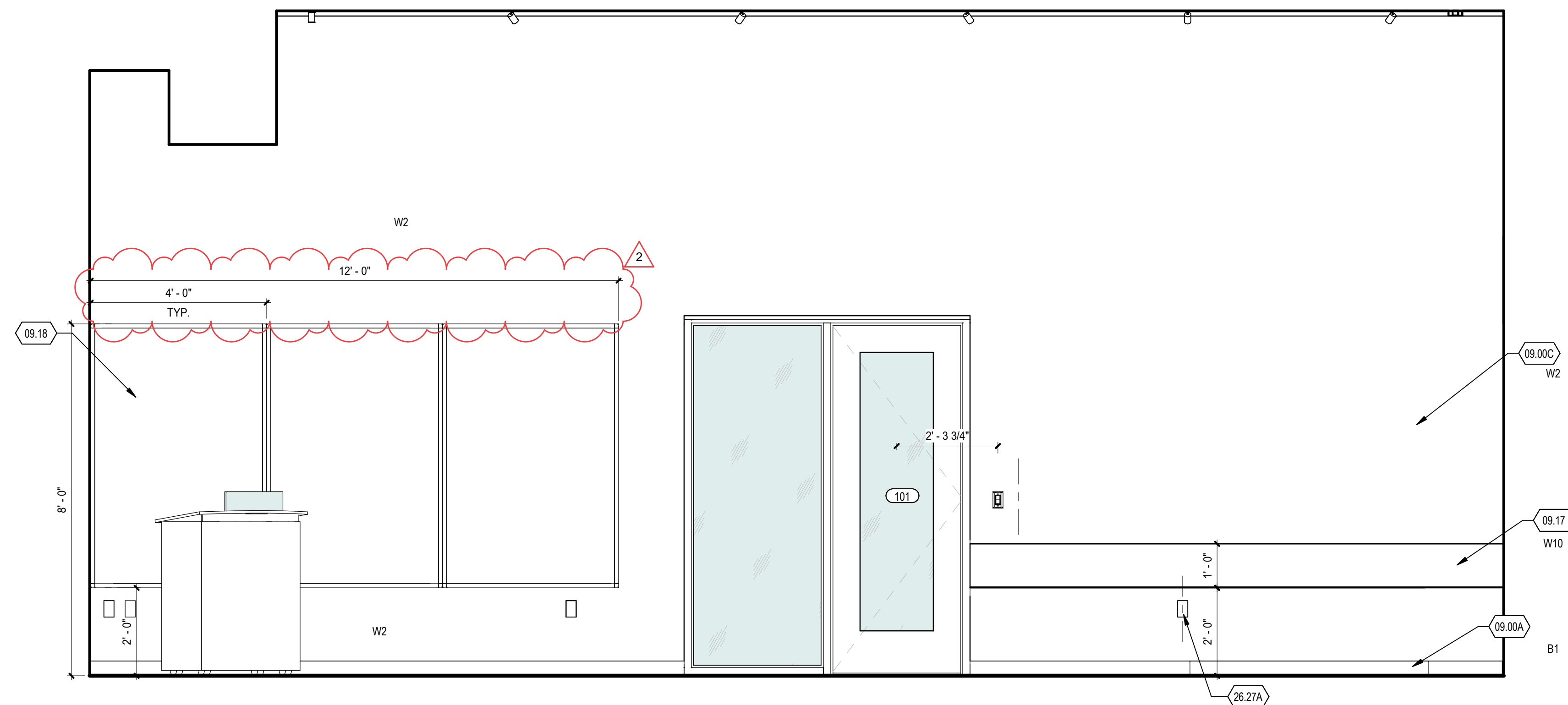
PROJECT NUMBER: 24003

BUILDING ELEVATIONS

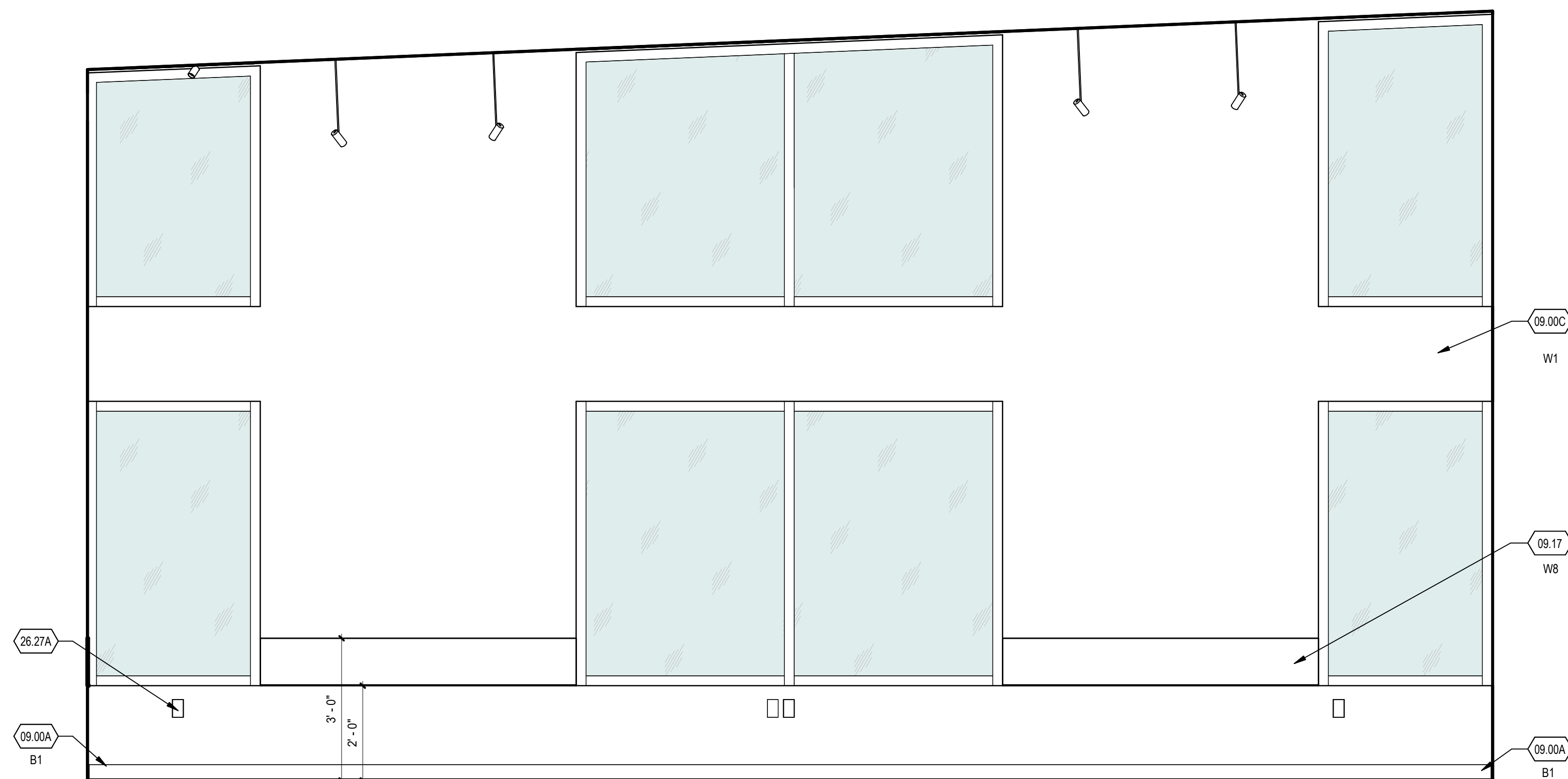
3/12/2024 4:42:35 p. m.



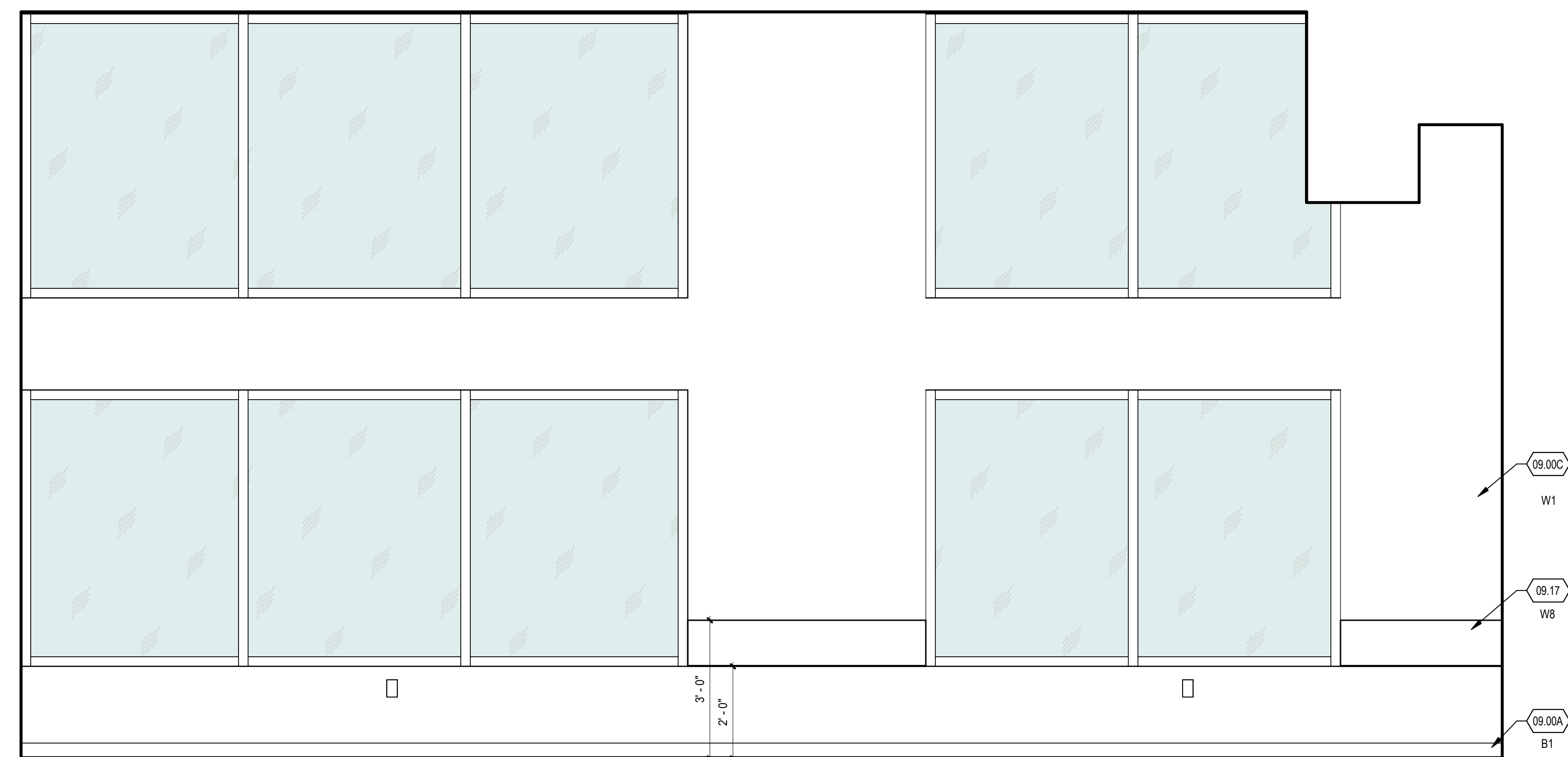
C1 CLASSROOM 101 - EAST ELEVATION
SCALE: 1/2" = 1'-0"



C4 CLASSROOM 101 - SOUTH ELEVATION
SCALE: 1/2" = 1'-0"



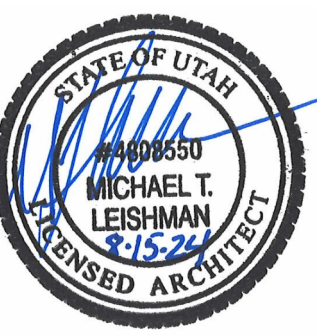
A1 CLASSROOM 101 - WEST ELEVATION
SCALE: 1/2" = 1'-0"



A4 CLASSROOM 101 - NORTH ELEVATION
SCALE: 1/2" = 1'-0"

REFERENCE NOTES

- 08.07 SKYFIELD FOLDING WALL SYSTEM WITH FULL WRITABLE SURFACE
- 09.00A SCHEDULED WALL BASE
- 09.00C PAINTED GYP BOARD
- 09.17 WALL PROTECTION
- 09.18 WHITEBOARDS
- 26.27A DUPLEX ELECTRICAL OUTLET



DATE	REVISION
2 12/03/24	Addendum #2

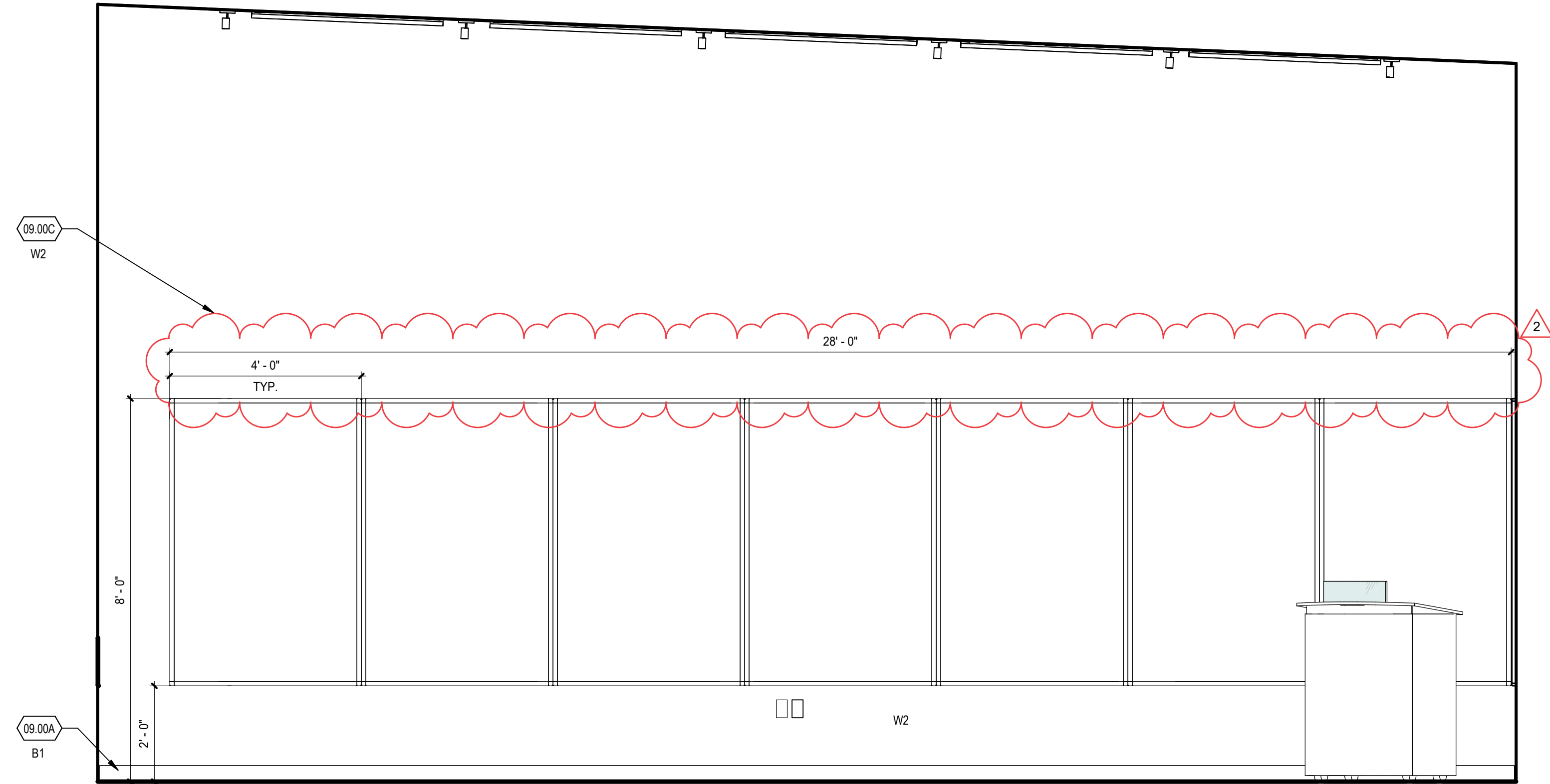
PROJECT NUMBER 24003

CLASSROOM 101 - INT ELEV.

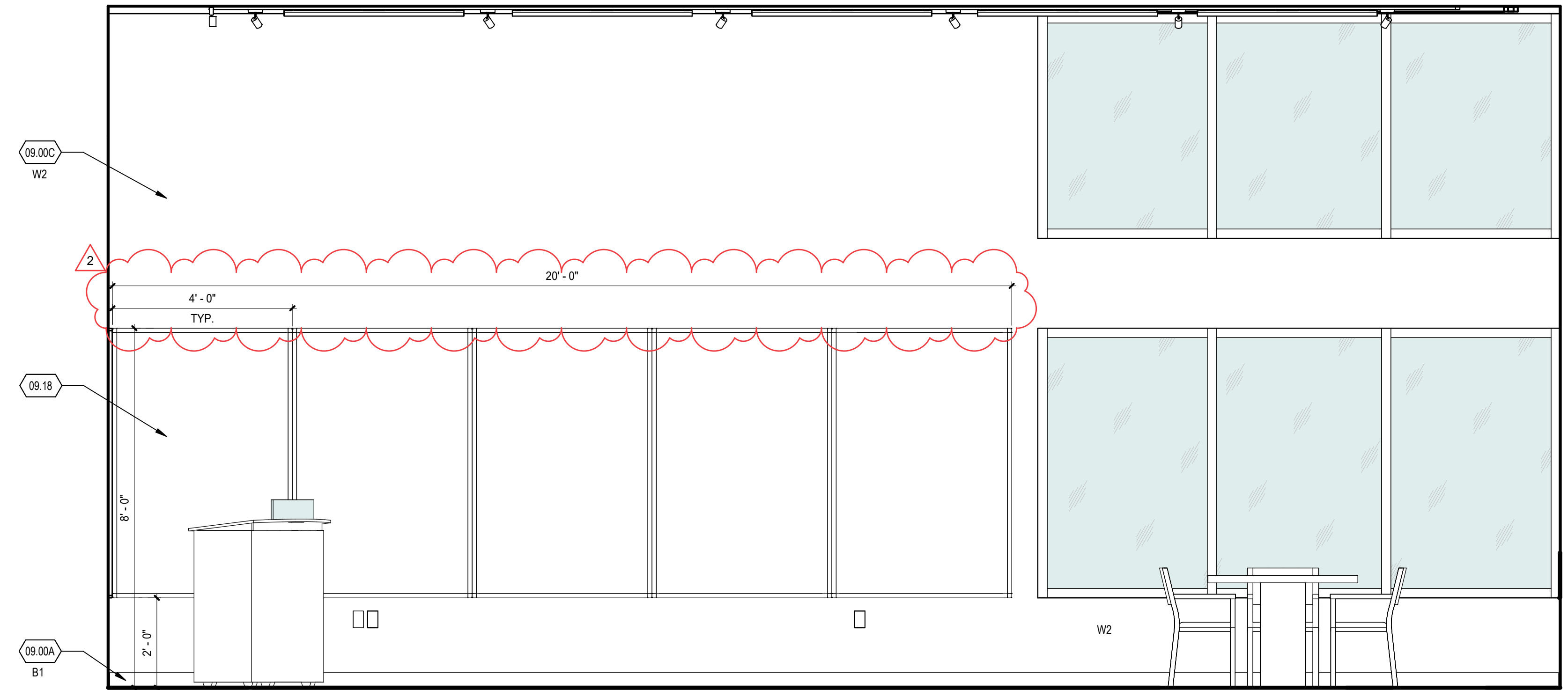
3/12/2024 4:42:35 p. m.

REFERENCE NOTES

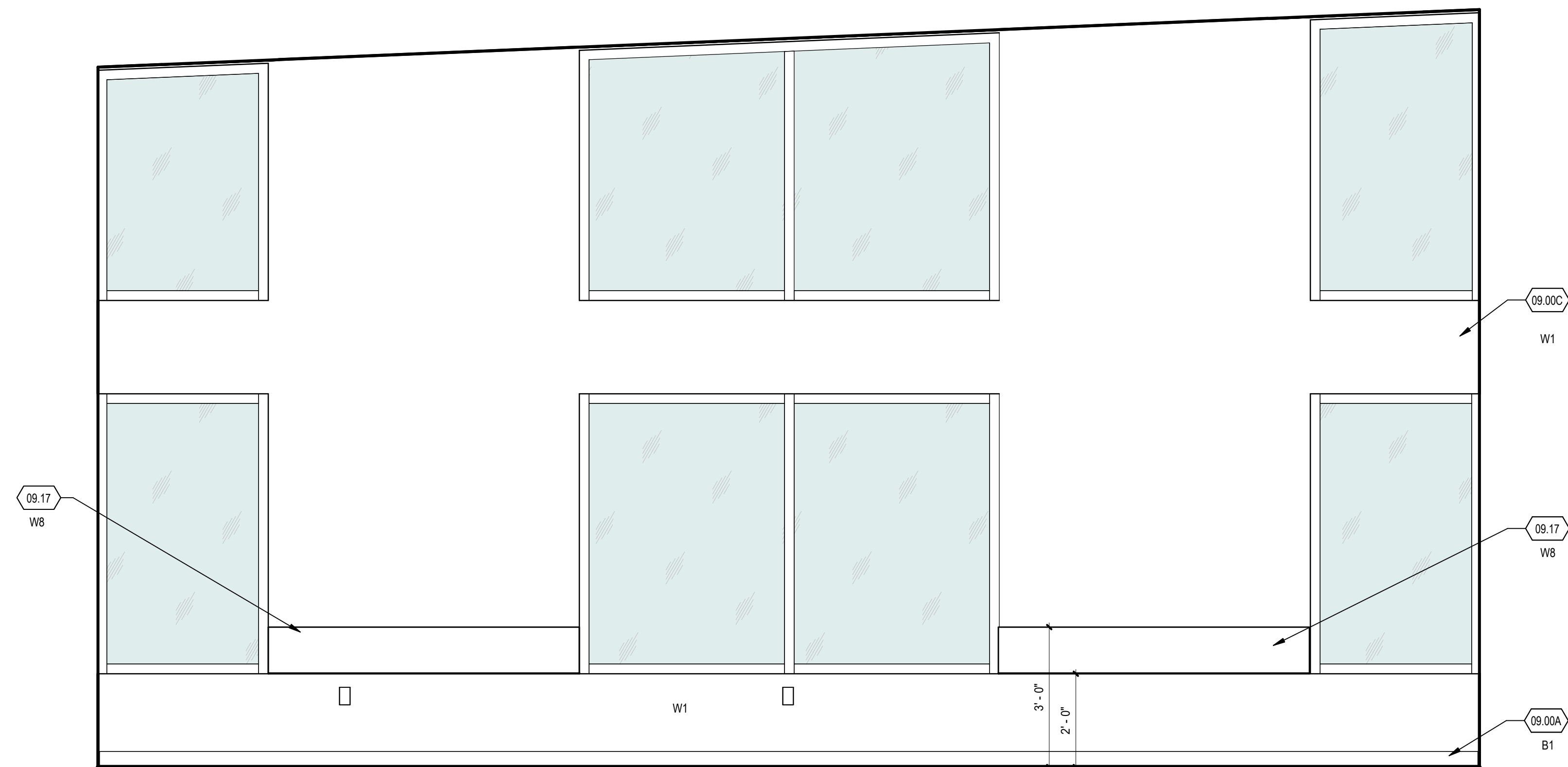
- 09.0A SCHEDULED WALL BASE
- 09.0C PAINTED GYP BOARD
- 09.17 WALL PROTECTION
- 09.18 WHITEBOARDS



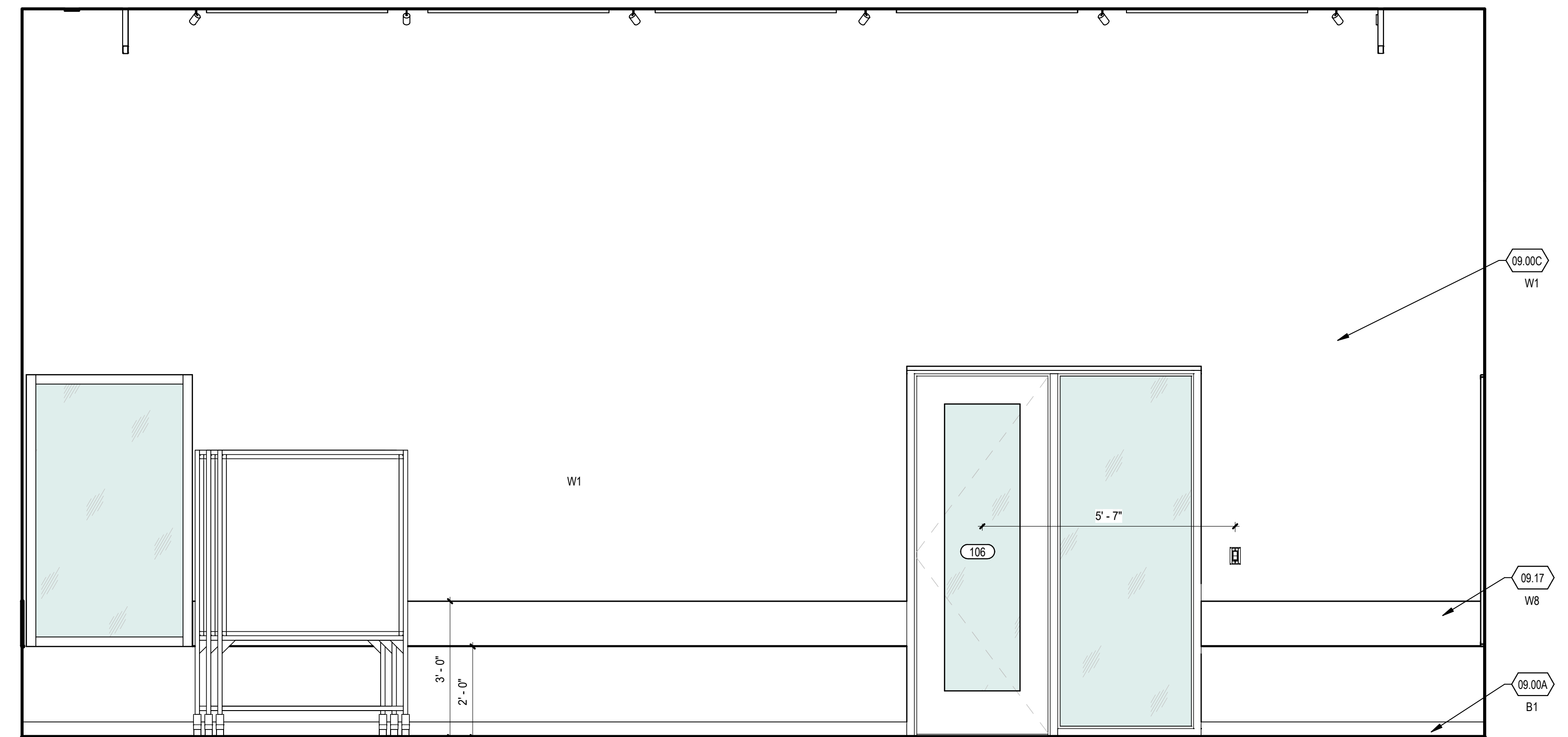
C1 CLASSROOM 106 - EAST ELEVATION
 SCALE: 1/2" = 1'-0"



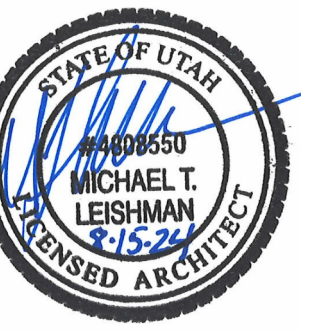
C4 CLASSROOM 106 - SOUTH ELEVATION
 SCALE: 1/2" = 1'-0"



A1 CLASSROOM 106 - WEST ELEVATION
 SCALE: 1/2" = 1'-0"



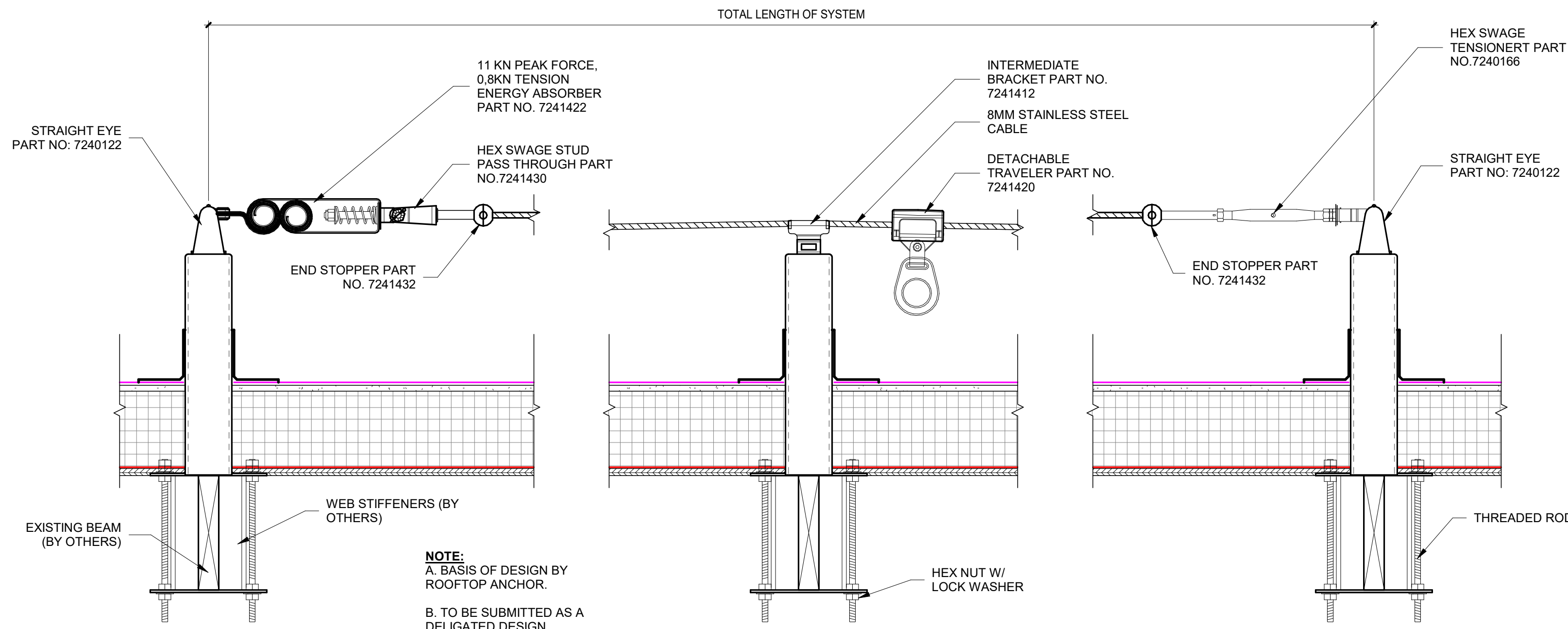
A4 CLASSROOM 106 - NORTH ELEVATION
 SCALE: 1/2" = 1'-0"



DATE	REVISION
2 12/03/24	Addendum #2

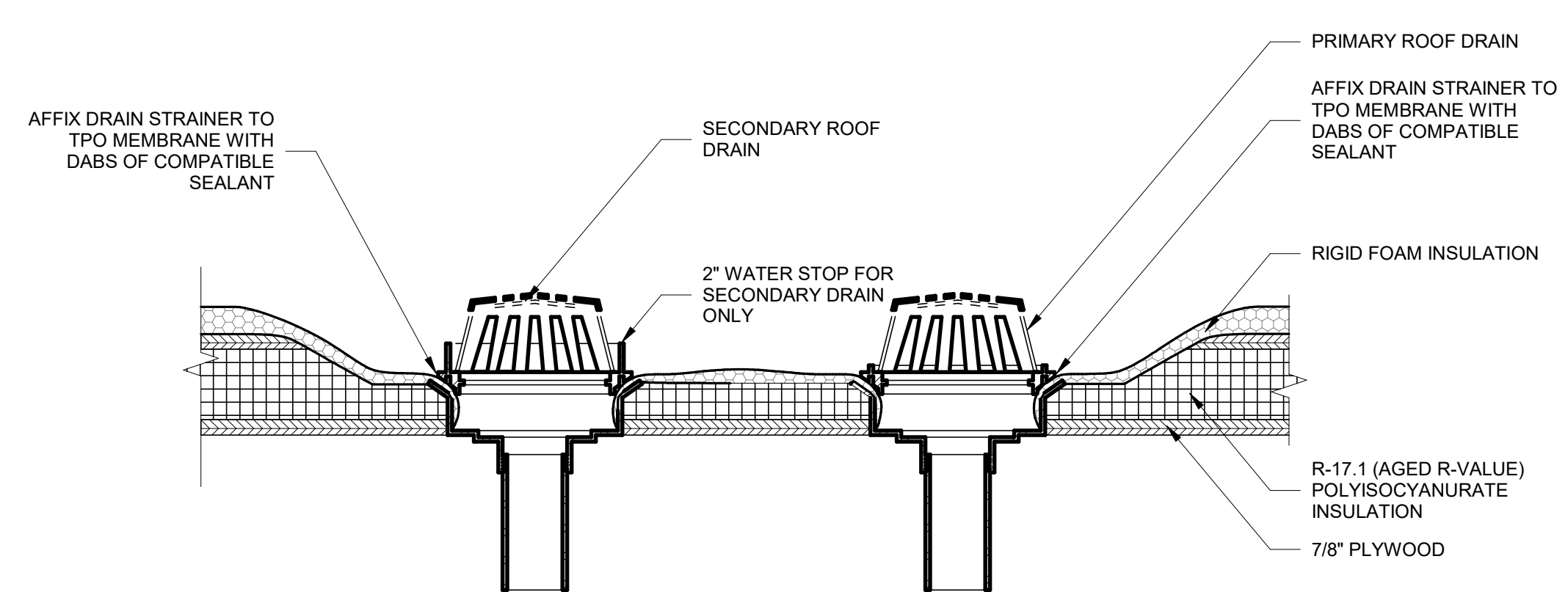
PROJECT NUMBER 24003

CLASSROOM 106 - INT ELEV.



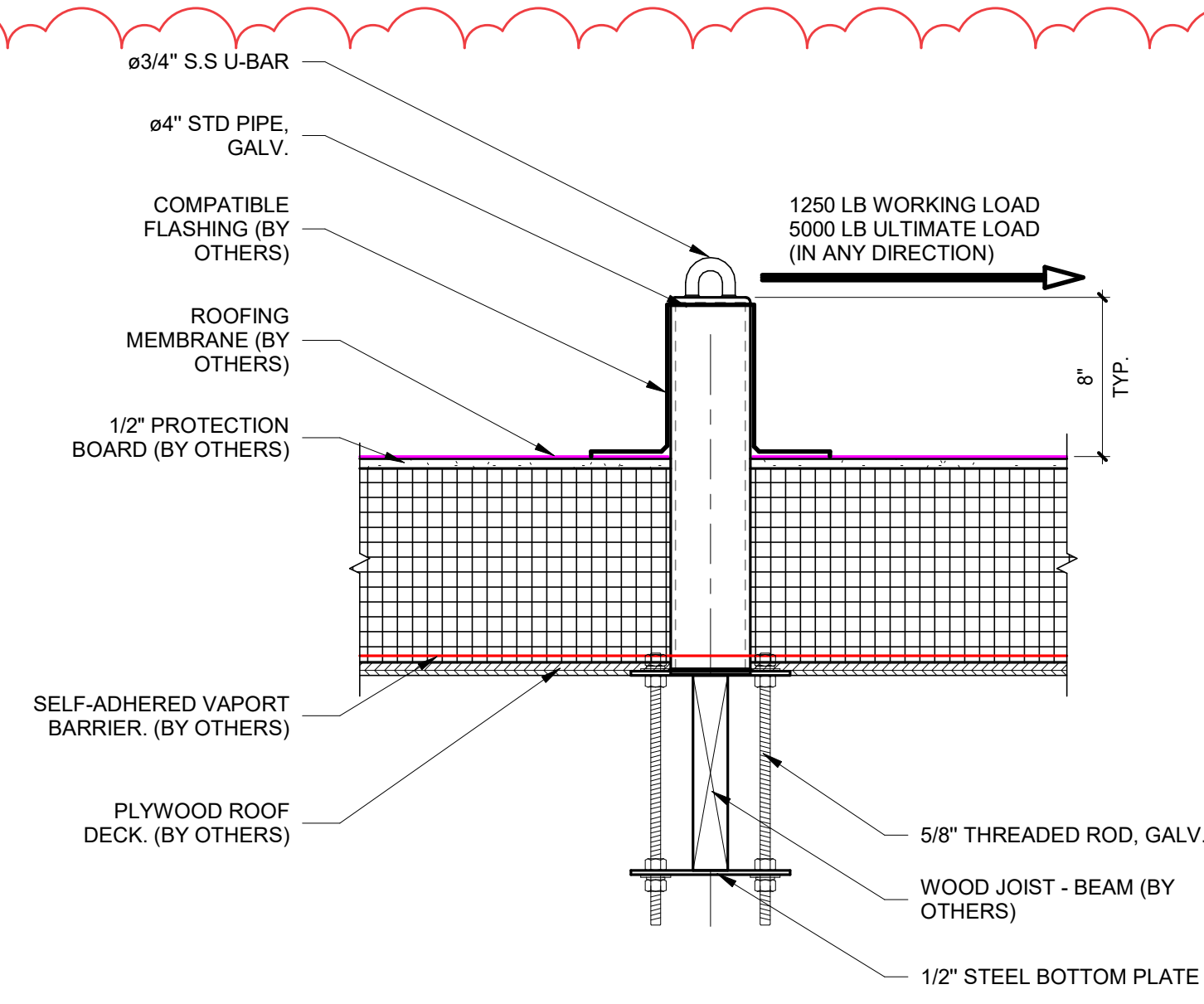
D1 TYPICAL ROOF TOP HORIZ. LIFELINE

SCALE: 1 1/2" = 1'-0"



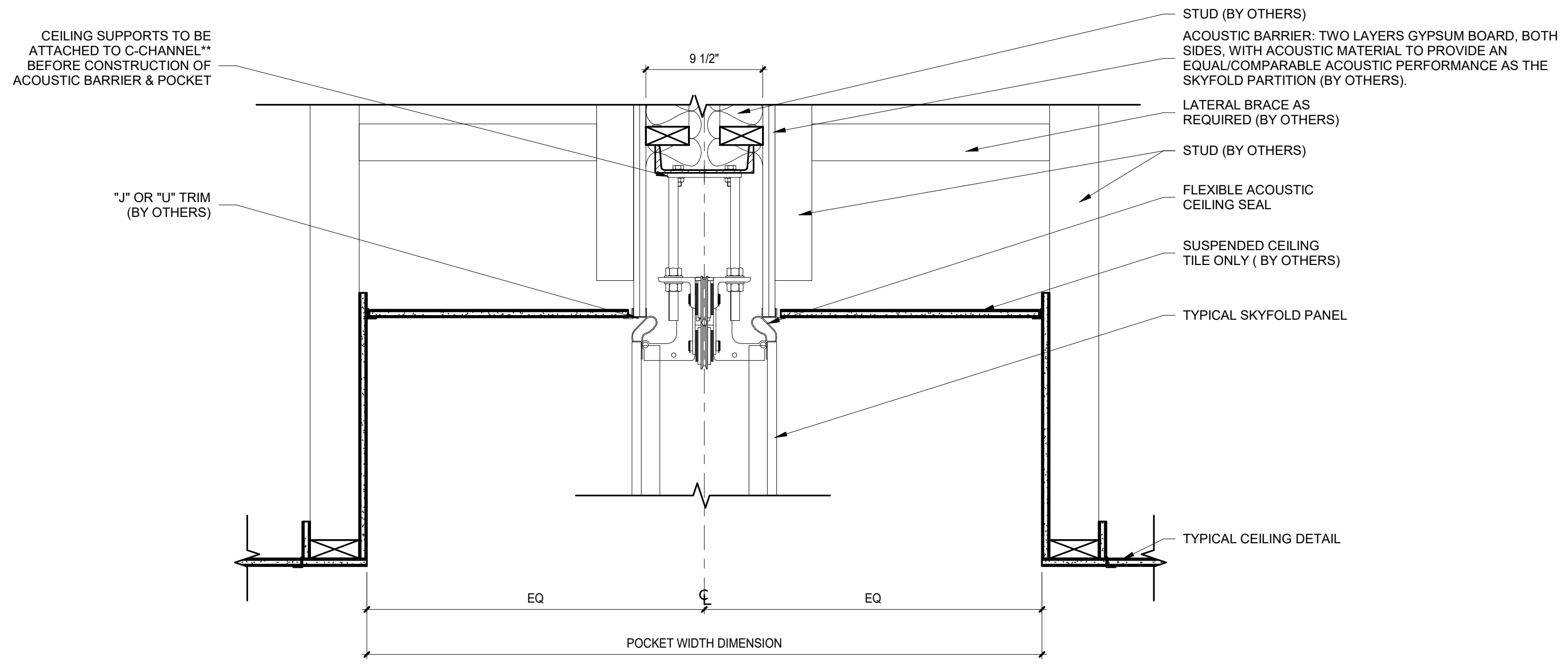
C1 TYP. ROOF DRAIN DETAIL

SCALE: 1 1/2" = 1'-0"



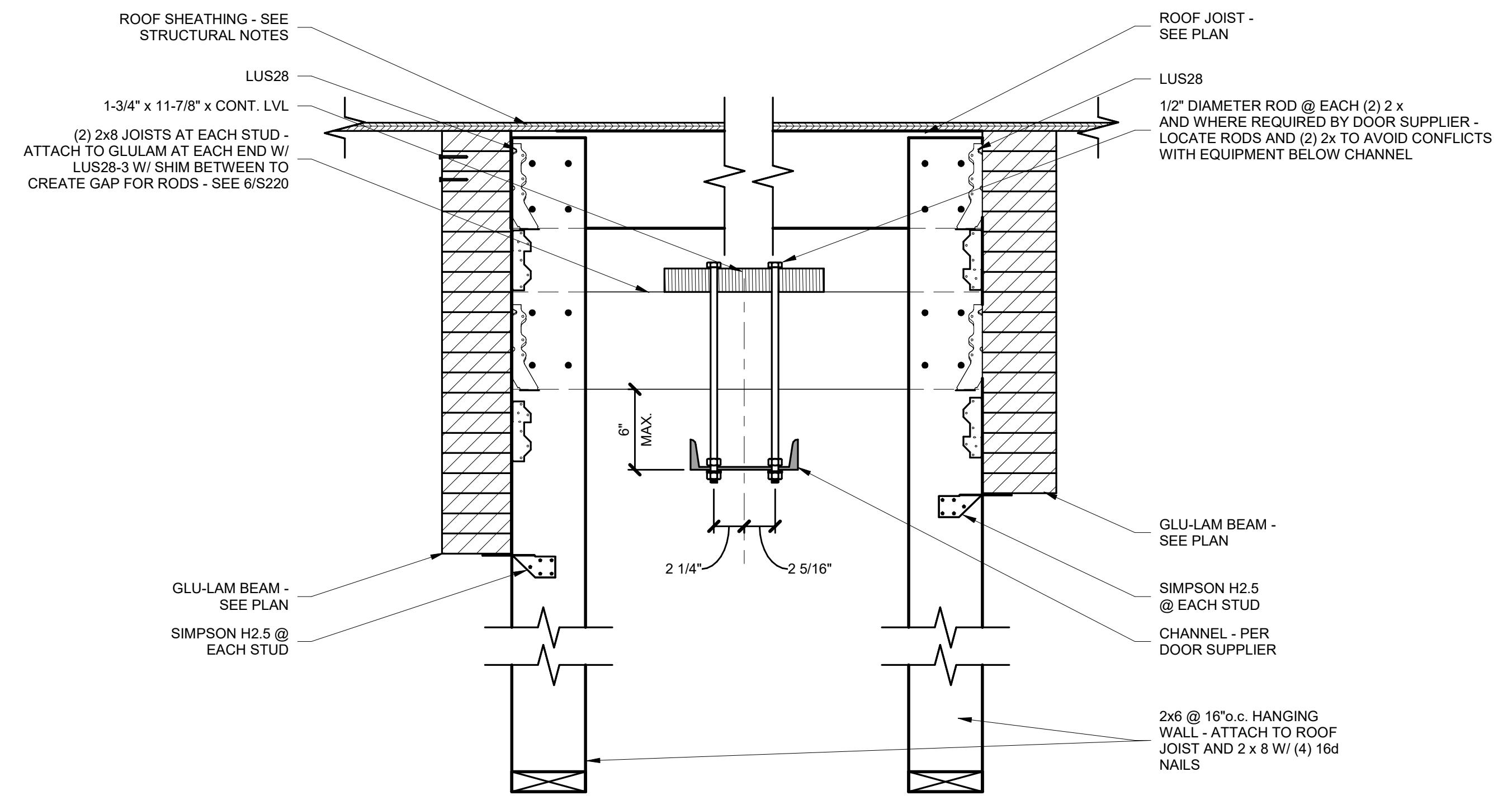
C4 TYPICAL ROOF TOP ANCHOR DETAIL

SCALE: 1 1/2" = 1'-0"



A1 POCKET DETAIL

SCALE: 1 1/2" = 1'-0"



A4 POCKET DETAIL STRUCTURAL

SCALE: 1 1/2" = 1'-0"



DATE	REVISION
2 12/03/24	Addendum #2

PROJECT NUMBER 24003

DETAILS

3/12/2024 4:42:36 p. m.