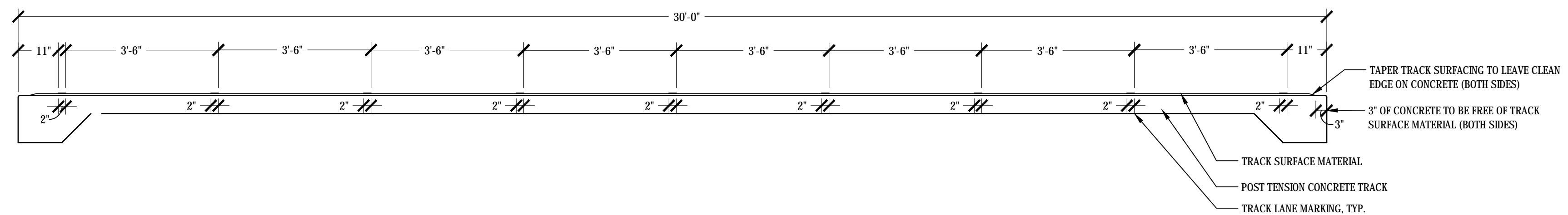


- NOTES:
1. EXPANSION JOINTS NEXT TO POST TENSION TRACK SHALL BE SILICONE IMPREGNATED.
  2. ENSURE A MINIMUM OF 30 DAYS CURING TIME OF POST TENSION TRACK PRIOR TO POURING ANY ADJACENT CONCRETE SITE WORK.
  3. USE KEY JOINTS IF JOINTS ARE NEEDED DURING POUR.
  4. ALL CABLES DAMAGED DURING CONSTRUCTION SHALL BE REPLACED.



- NOTES:
1. ENSURE EDGE OF TRACK HAS A CLEAN TAPERED FINISH TO TRANSITION FROM TRACK SURFACING TO CONCRETE
  2. DETAIL IS FOR LANE LAYOUT REFERENCING AND SURFACE TRANSITIONING. TRACK MUST MEET UHSAA STANDARDS
  3. SEAL TRACK EDGES TO PREVENT WATER SEEPAGE UNDER MATERIAL

**9** P.T. TRACK TYPICAL PERIMETER BEAM SECTION  
1/2" = 1'-0"

**10** TRACK SECTION  
1/2" = 1'-0"

**REFERENCE DETAILS**