

Cedar Ridge Elementary School

Approximately 8,600 SF.
Contractor to verify.

Legend



Saw cut asphalt as necessary to provide a clean edge for new asphalt.

Re-stripe to match existing striping.

Cedar Ridge Elementary School

Remove and dispose of existing asphalt in this area. Verify base materials are adequate to receive new asphalt paving. Provide +/- 1" compacted base materials as necessary. Furnish and install 4" thick HD asphalt. Approx. 8,600 SF. Contractor to verify quantities prior to bid.

Concrete valley gutter will be demolished. Will not be replaced. Infill area with road base materials to match sub grade for asphalt paving.



Sunrise Elementary School

Approximately 7,500 SF.
Contractor to verify.

Legend



Sunrise Elementary School

Remove and replace
asphalt in this area.

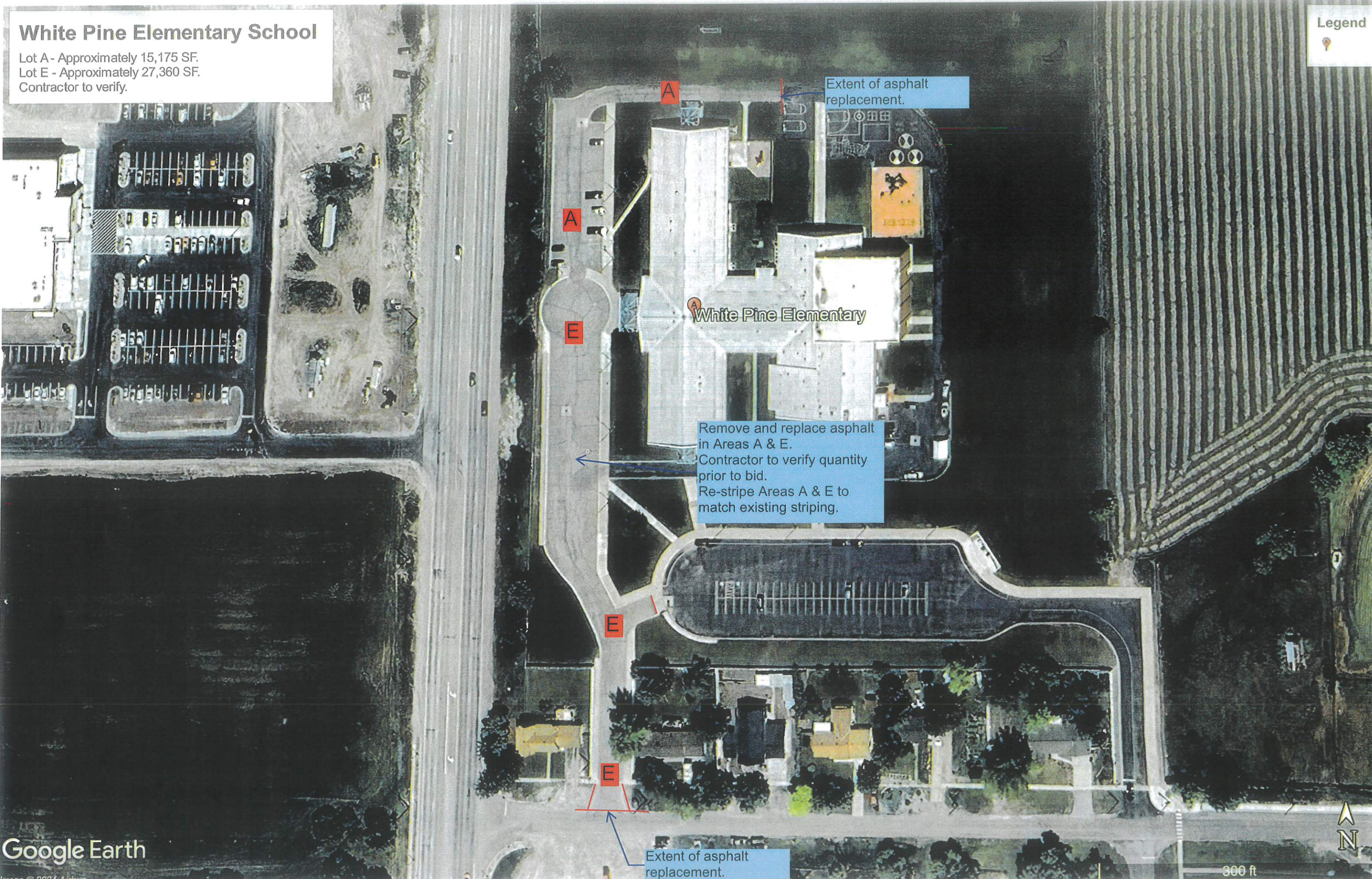
Crack seal and seal coat this area.
Contractor to verify quantities prior to bid.
Re-stripe to match existing striping.



White Pine Elementary School

Lot A - Approximately 15,175 SF.
Lot E - Approximately 27,360 SF.
Contractor to verify.

Legend



Extent of asphalt replacement.

White Pine Elementary

Remove and replace asphalt in Areas A & E.
Contractor to verify quantity prior to bid.
Re-stripe Areas A & E to match existing striping.

Extent of asphalt replacement.

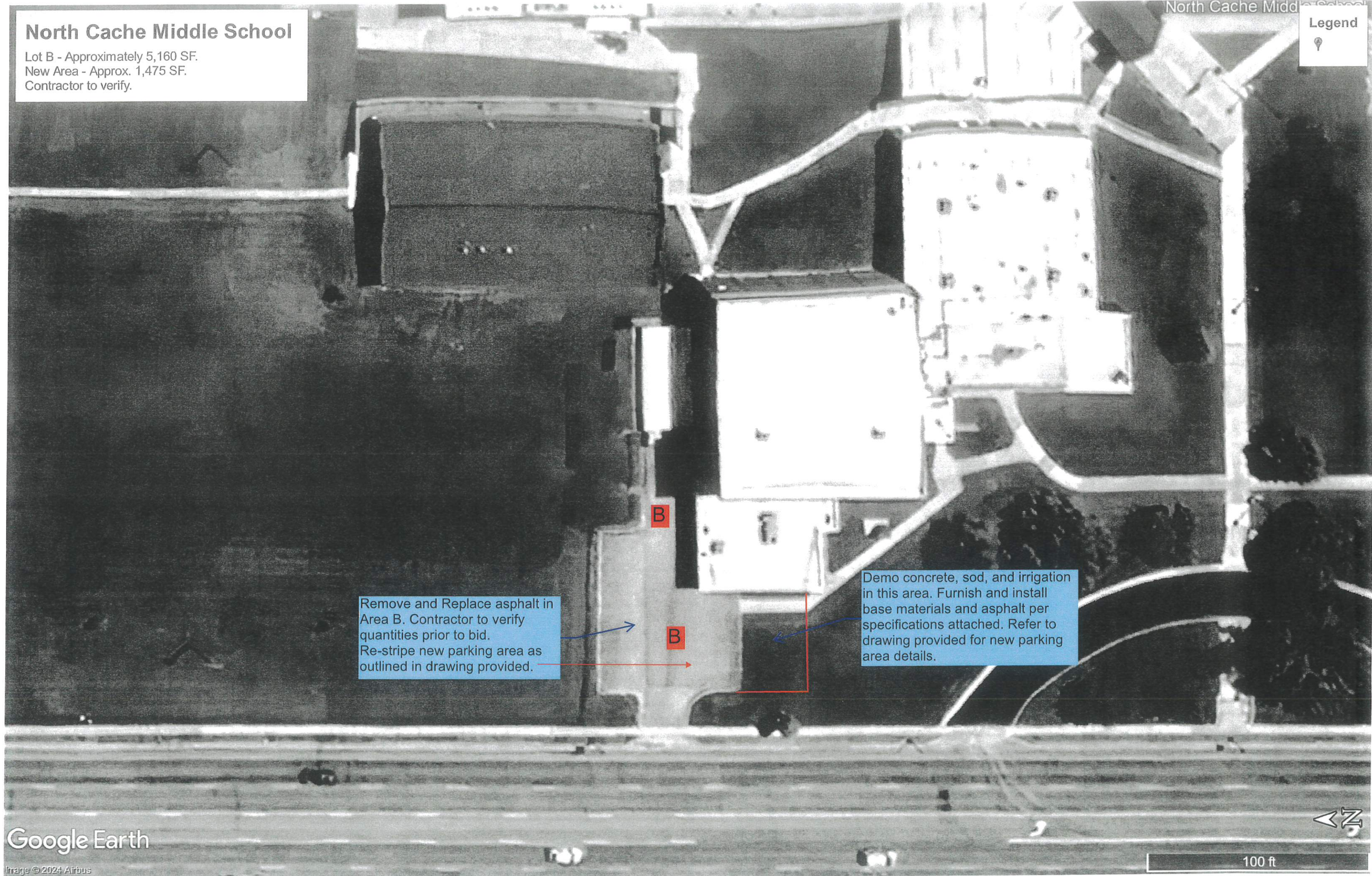


North Cache Middle School

Lot B - Approximately 5,160 SF.
New Area - Approx. 1,475 SF.
Contractor to verify.

North Cache Midd

Legend



Remove and Replace asphalt in Area B. Contractor to verify quantities prior to bid. Re-stripe new parking area as outlined in drawing provided.

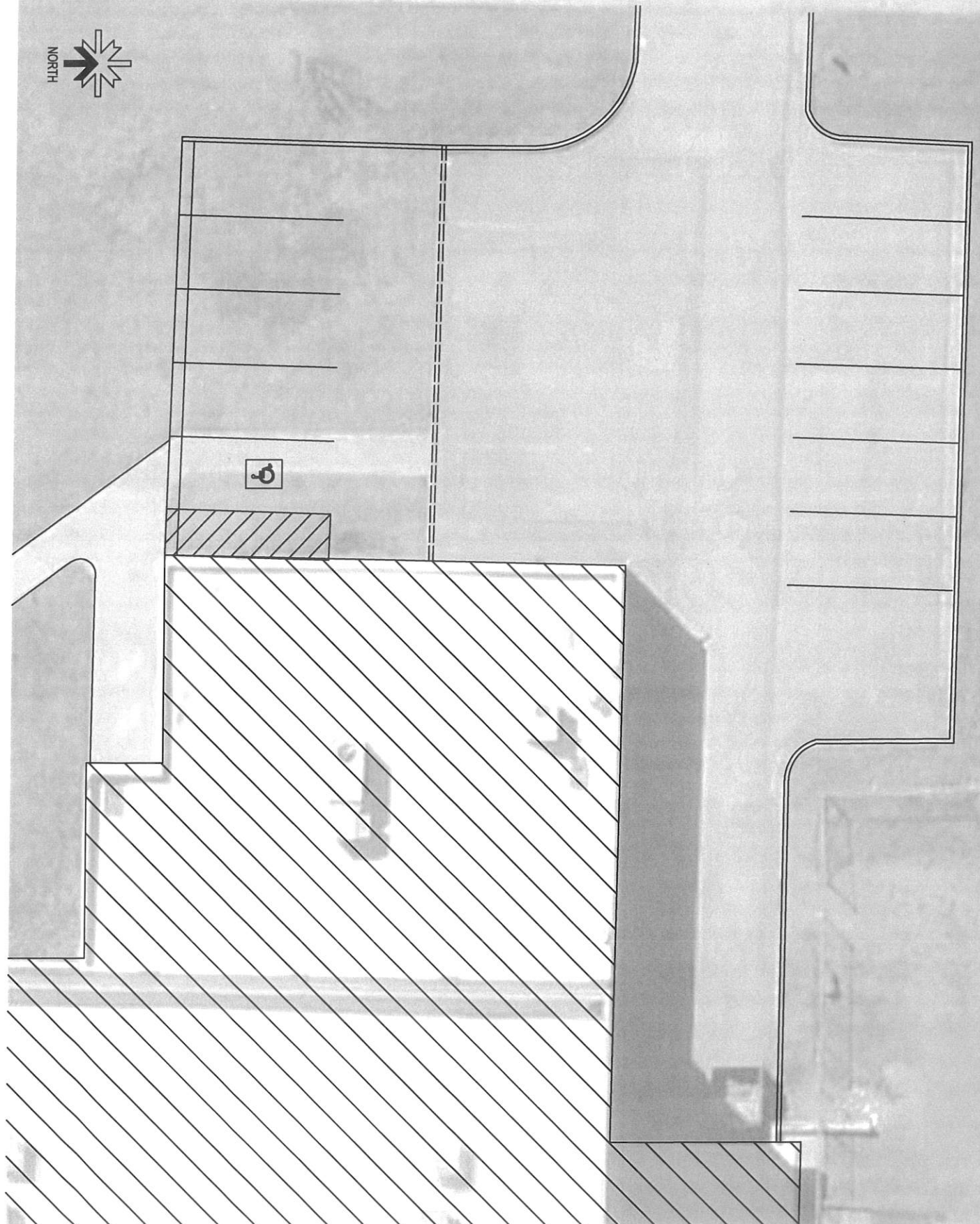
B

B

Demo concrete, sod, and irrigation in this area. Furnish and install base materials and asphalt per specifications attached. Refer to drawing provided for new parking area details.



NORTH CACHE



Mountain Crest High School

Lot A - Approximately 21,135 SF.
Lot B - Approximately 24,485 SF.
Lot H - Approximately 139,500 SF.
Lot J - Approximately 46,440 SF.
Contractor to verify.

The quantities provided are for entire parking areas noted. Contractor to verify prior to bid. Typical throughout.

Legend

 Mountain Crest High School

Saw cut asphalt

Saw cut asphalt

Area B to be 4" thick HD asphalt placement

Replace these areas inside limit lines. Contractor to verify quantities prior to bid.

Contractor to re-stripe all areas to match existing striping.

Saw cut asphalt

Saw cut asphalt

Replace this area inside red limit lines. Contractor to verify quantities prior to bid.

Saw cut asphalt

Saw cut asphalt

Saw cut asphalt

Replace this area inside red limit lines

