

Discovery Elementary

820 N 500 W, Brigham City, UT 84302

Legend

- Area A: Crack seal, seal coat, & re-stripe
Approximately 19,215 SF
 - Area B: Crack seal, seal coat, & re-stripe
Approximately 18,000 SF
 - Area C: Demo, replace, & re-stripe asphalt
Approximately 6,345 SF
 - Area D: Demo, replace, & re-stripe asphalt
Approximately 13,825 SF
- **Contractor to field verify all quantities****

Google Earth

Image © 2024 Airbus

Discovery Elementary School



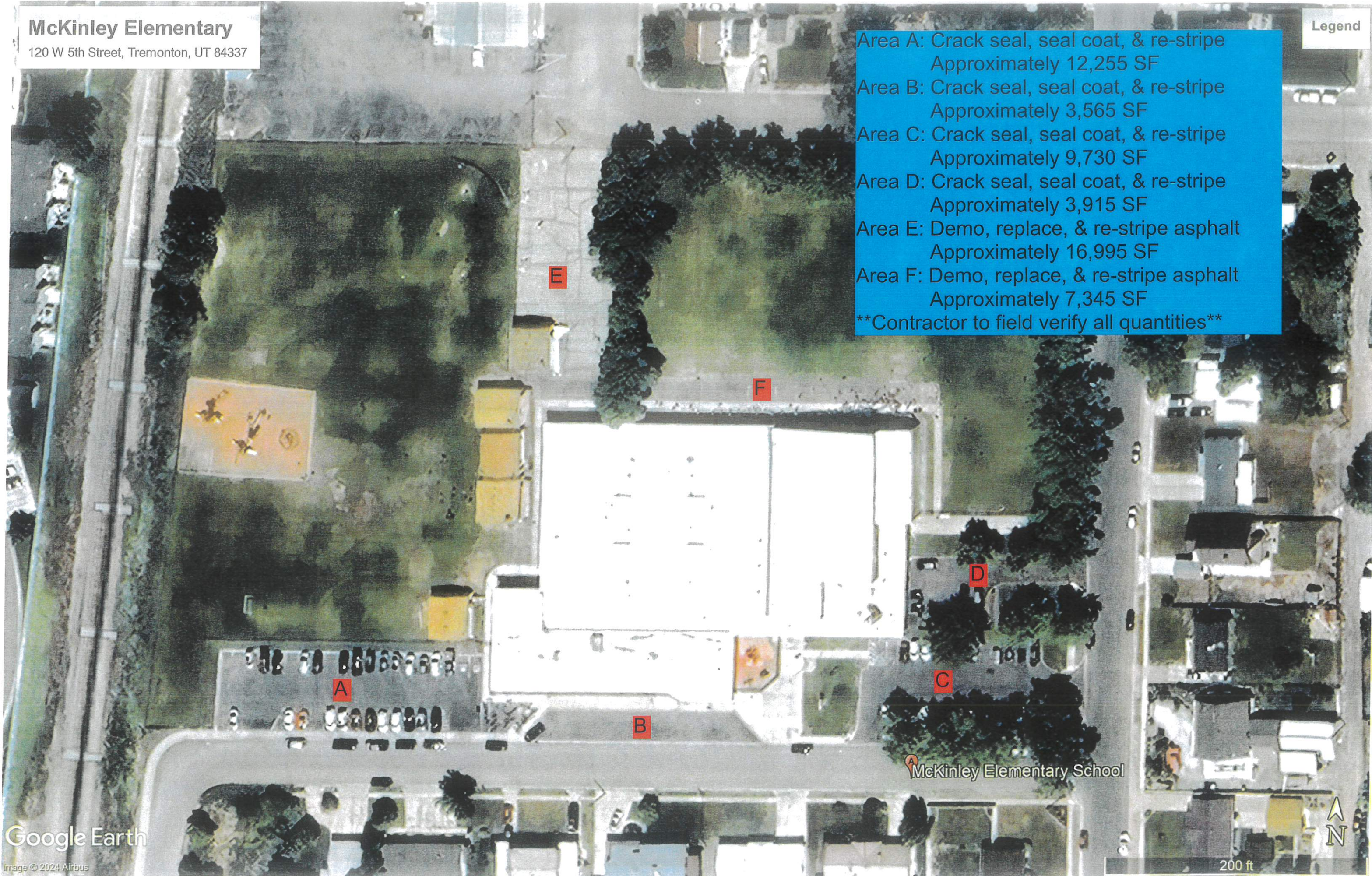
200 ft

McKinley Elementary

120 W 5th Street, Tremonton, UT 84337

Legend

- Area A: Crack seal, seal coat, & re-stripe
Approximately 12,255 SF
 - Area B: Crack seal, seal coat, & re-stripe
Approximately 3,565 SF
 - Area C: Crack seal, seal coat, & re-stripe
Approximately 9,730 SF
 - Area D: Crack seal, seal coat, & re-stripe
Approximately 3,915 SF
 - Area E: Demo, replace, & re-stripe asphalt
Approximately 16,995 SF
 - Area F: Demo, replace, & re-stripe asphalt
Approximately 7,345 SF
- **Contractor to field verify all quantities****



Google Earth

Image © 2024 Airbus

McKinley Elementary School

200 ft

Snowville Elementary

160 N Stone Road, Snowville, UT 84336

Legend

Snowville Elementary School

Playground Area:

Demo Approximately 600 SF of existing Playground asphalt. (20' x 30')

Demo and dispose of existing base materials.

Furnish and install base materials per the detail provided.

Furnish and install new 3" APWA asphalt as noted in the detail provided.

****Contractor to field verify all quantities****

Google Earth

Image © 2024 Airbus



100 ft

Bear River High School

1450 S Main Street, Garland, UT 84312

Legend

- Area H: Crack seal, seal coat, & re-stripe
Approximately 10,460 SF
- Area I: Crack seal, seal coat, & re-stripe
Approximately 11,385 SF
- Area J: Crack seal, seal coat, & re-stripe
Approximately 99,200 SF

****Contractor to field verify all quantities****



Box Elder High School & BEHS Natatorium

380 S 600 W, Brigham City, UT 84302

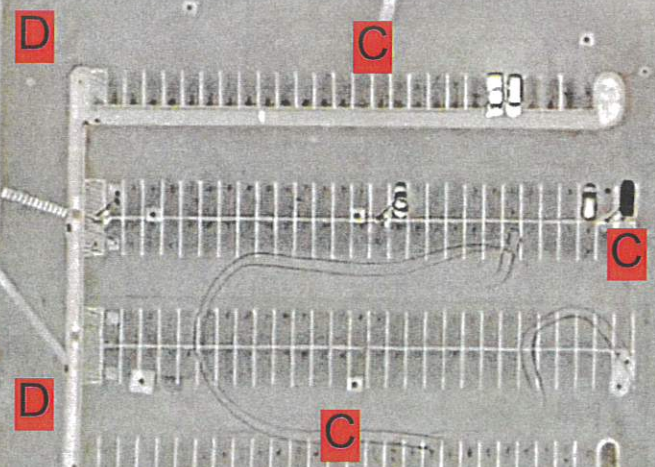
Legend

Area C: Crack seal, seal coat, & re-stripe
Approximately 72,960 SF
Area D: Crack seal, seal coat, & re-stripe
Approximately 9,710 SF
Area E: Crack seal, seal coat, & re-stripe
Approximately 34,365 SF
****Contractor to field verify all quantities****

Box Elder High School

Box Elder High School Natatorium

Area A: Crack seal, seal coat, & re-stripe
Approximately 10,075 SF
****Contractor to field verify all quantities****

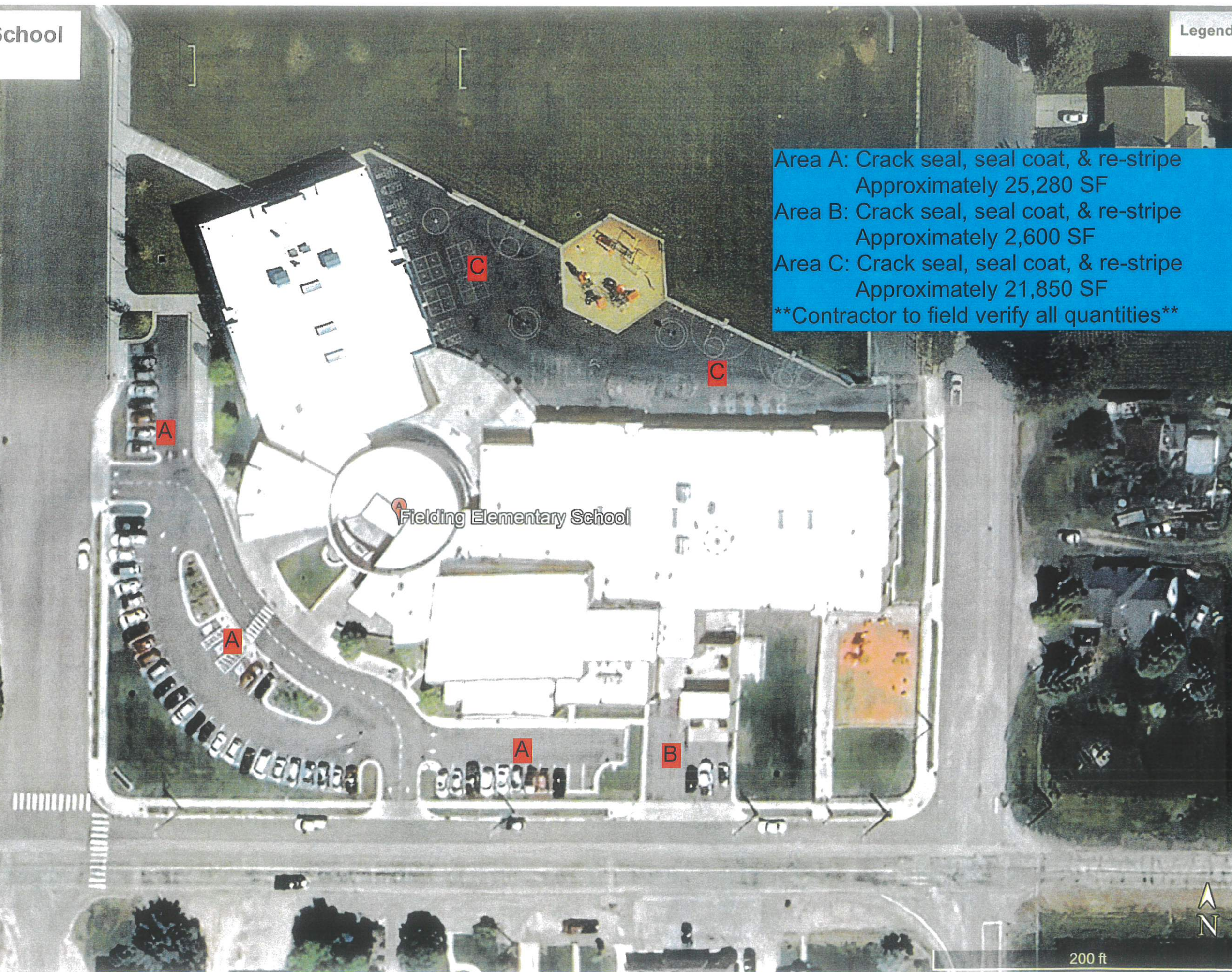


Fielding Elementary School

50 W Main Street, UT 84311

Legend

Area A: Crack seal, seal coat, & re-stripe
Approximately 25,280 SF
Area B: Crack seal, seal coat, & re-stripe
Approximately 2,600 SF
Area C: Crack seal, seal coat, & re-stripe
Approximately 21,850 SF
Contractor to field verify all quantities



Fielding Elementary School

Google Earth

Image © 2024 Airbus



200 ft

Willard Elementary School

40 S Street, Willard, UT 84340

Legend

Area B: Crack seal, seal coat, & re-stripe
Approximately 4,700 SF
Contractor to field verify all quantities

Willard Elementary School

B

B



Lakeview Elementary School

851 S 200 W, Brigham City, UT 84302

Legend

Area A: Crack seal, seal coat, & re-stripe
Approximately 9,900 SF

Area B: Crack seal, seal coat, & re-stripe
Approximately 14,460 SF

Area C: Crack seal, seal coat, & re-stripe
Approximately 24,360 SF

Exclude areas under portables

Contractor to field verify all quantities

A

B

B

C

C

C

Lake View Elementary School

Google Earth

Image © 2024 Airbus



100 ft

Box Elder Middle School

18 S 500 E, Brigham City, UT 84302

Legend

Area A: Crack seal, seal coat, & re-stripe
Approximately 22,530 SF

Area B: Crack seal, seal coat, & re-stripe
Approximately 26,160 SF

Area C: Crack seal, seal coat, & re-stripe
Approximately 1,585 SF

****Contractor to field verify all quantities****

Bear River Middle School

300 E 1500 S, Garland, UT 84337

Legend

Area A: Crack seal, seal coat, & re-stripe
Approximately 44,890 SF

Area B: Crack seal, seal coat, & re-stripe
Approximately 14,860 SF

Contractor to field verify all quantities

 Bear River Middle School

Google Earth

Image © 2024 Airbus

200 ft



BESD District Office & ILSC

960 S Main Street, Brigham City, UT 84302

Legend

ILSC

Area A: Crack seal, seal coat, & re-stripe
Approximately 10,470 SF

Area B: Crack seal, seal coat, & re-stripe
Approximately 2,250 SF

****Contractor to field verify all quantities****

Area A: Crack seal, seal coat, & re-stripe
Approximately 13,350 SF

Area B: Crack seal, seal coat, & re-stripe
Approximately 12,880 SF

Area C: Crack seal, seal coat, & re-stripe
Approximately 11,285 SF

Area D: Crack seal, seal coat, & re-stripe
Approximately 24,545 SF

Area E: Crack seal, seal coat, & re-stripe
Approximately 12,350 SF

Area F: Crack seal, seal coat, & re-stripe
Approximately 20,465 SF

****Contractor to field verify all quantities****

BESD District Office

Box Elder School District

