



Corporate Office
Salt Lake City
181 East 5600 South
Murray, UT 84107
T 801 530 3148

St. George
230 N. 1680 E.
Building V
St. George, UT 84770
T 435 674 4800

Logan
40 W. Cache Valley Blvd.
Building 1, Suite B
Logan, UT 84341
T 435 752 5081

Arizona
1602 S. Priest Drive
Suite #103
Tempe, AZ 85281
T 480 889 5075

Date: 03-11-2024

Project No: 123998

Project: INDOOR ATHLETIC FACILITY - MUNICIPOOL REMODEL

Revision: Addendum-004

Addendum - The following revisions, additions, deletions, and/or items of clarification shall hereby be included as an integral part of the Contract Documents for the above-listed project and shall be fully binding. All other requirements shall remain in effect of the original plans and specifications.

DIVISION - 21, 22

DRAWINGS

Sheet: M100 - BASEMENT HVAC PLAN

- CHANGE KEYED NOTE

Sheet: M101 - LEVEL 1 & MEZZANINE HVAC PLANS

- CHANGE KEYED NOTE
- ADD KEYED NOTE

Sheet: M102 - ROOF MECHANICAL PLAN

- CHANGE KEYED NOTE
- ADD KEYED NOTE
- REMOVE ROOF CURB

Sheet: M111 - LEVEL 1 & MEZZANINE MECHANICAL PIPING PLAN

- CHANGE KEYED NOTE AND EQUIPMENT TAG.
- ADD KEYED NOTE

Sheet: M401 - ENLARGED HVAC PLANS

- REMOVE LOUVER AND KEYED NOTE

Sheet: MD100 - BASEMENT MECHANICAL DEMOLITION PLAN

- MODIFY KEYED NOTE TEXT
- LOUVER TO REMAIN
- REMOVE DEMO X'S. ADD KEYED NOTE CALLOUTS.
- REMOVE DEMO X'S

Sheet: MD101 - LEVEL 1 & MEZZANINE MECHANICAL DEMOLITION PLAN

- UNIT HEATER NOT EXISTING

Sheet: MD102 - ROOF MECHANICAL DEMOLITION PLAN

- REMOVE EXHAUST FAN
- REMOVE KEYED NOTE 2.

Sheet: MD111 - LEVEL 1 & MEZZANINE MECHANICAL PIPING DEMOLITION PLAN

- LOUVER TO REMAIN

Sheet: P111 - LEVEL 1 WATER DISTRIBUTION PLAN

- TAG DRINKING FOUNTAIN
- NEW LAV
- NEW SHOWER AND ADA SHOWER
- NEW URINAL

Sheet: P401 - ENLARGED WASTE & VENT PLANS

- REDUCED NUMBER OF WATER HEATERS FROM TWO TO ONE.

Sheet: P601 - PLUMBING SCHEDULES

- NEW WATER HEATER.
- NEW SHOWER, ADA SHOWER, LAVATORY, AND URINAL.

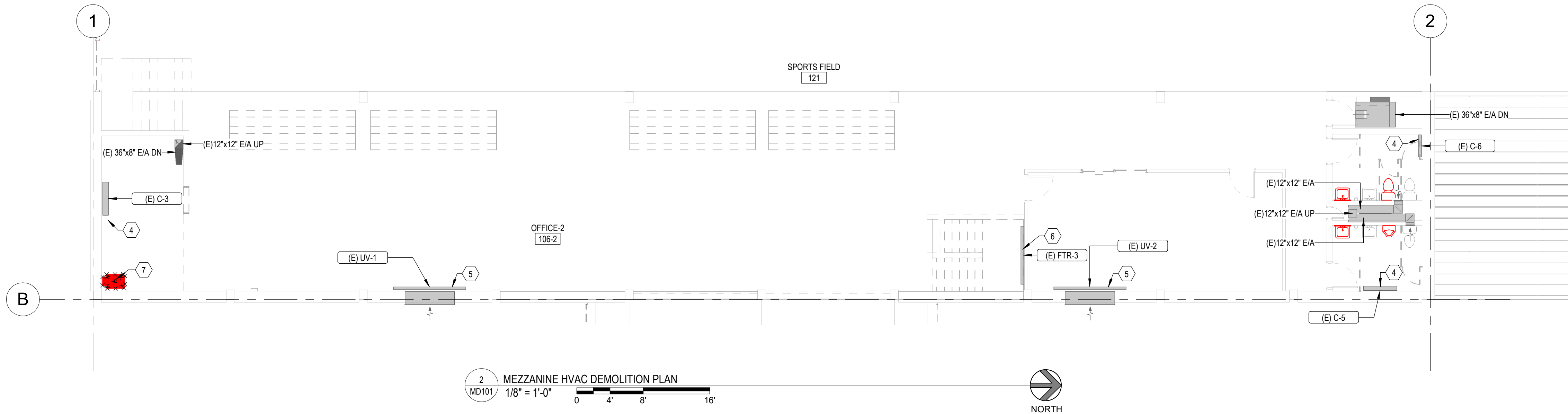
Sheet: PD100 - BASEMENT PLUMBING DEMOLITION PLAN

- MODIFY KEYED NOTE
- REMOVE DEMO X'S

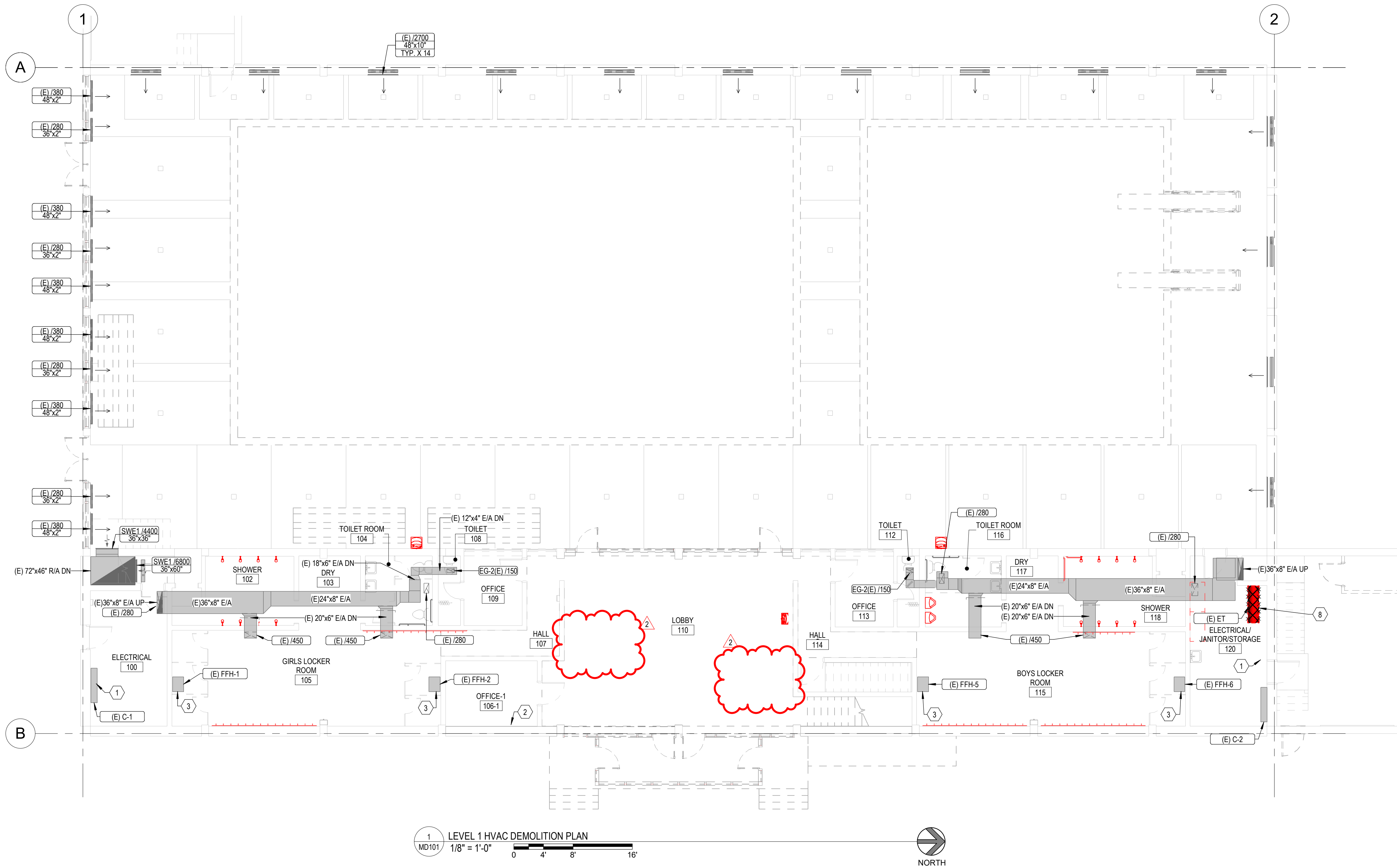
Sheet: PD101 - LEVEL 1 PLUMBING DEMOLITION PLAN

- ADD KEYED NOTE
- ADD KEYED NOTE CALLOUT.

End of Addendum.



2 MEZZANINE HVAC DEMOLITION PLAN
MD101 1/8" = 1'-0" 0 4 8 16 NORTH



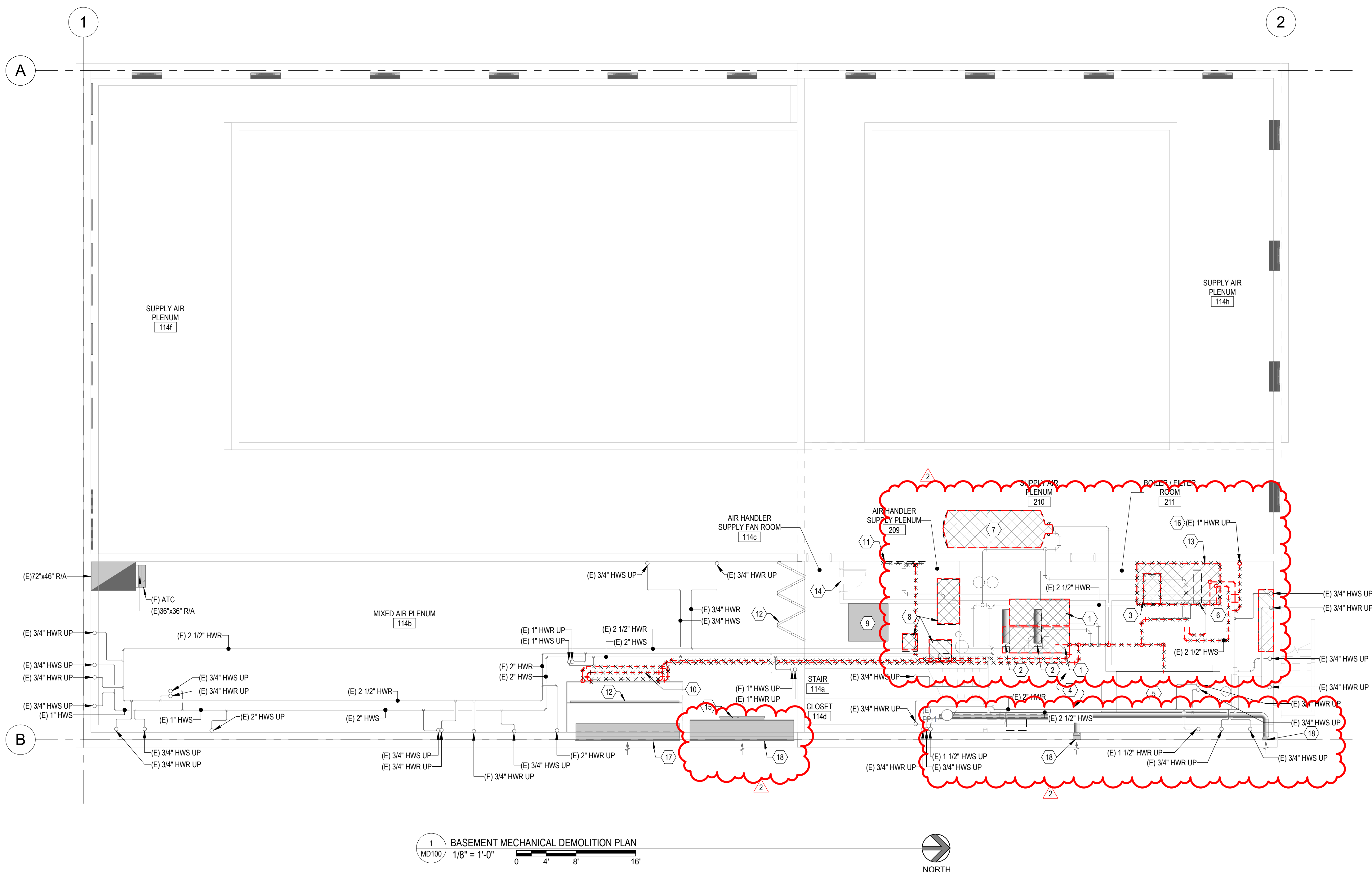
1 LEVEL 1 HVAC DEMOLITION PLAN
MD101 1/8" = 1'-0" 0 4 8 16 NORTH

- ### KEYED NOTES
- EXISTING CONVECTOR TO REMAIN.
 - EXISTING FINNED TUBE RADIATOR TO REMAIN.
 - EXISTING FORCED FLOW HEATER TO REMAIN.
 - EXISTING CONVECTOR TO REMAIN.
 - EXISTING UNIT VENTILATOR TO REMAIN.
 - EXISTING FINNED TUBE RADIATOR TO REMAIN.
 - DEMOLISH AND REMOVE EXISTING GAS FIRED, CEILING HUNG, UNIT HEATER, AND ASSOCIATED FLUES THRU ROOF. PATCH AND REPAIR ROOF TO MATCH EXISTING.
 - REMOVE THE EXISTING HORIZONTAL EXPANSION TANK.

MARKS	DATE	DESCRIPTION
2	08.11.2024	MECHANICAL
PROJECT #:	123998	
DRAWN BY:	Author	
CHECKED BY:	Checker	
ISSUED:	12.07.2023	



- KEYED NOTES**
- 1 ABANDON IN PLACE EXISTING POOL SAND FILTER.
 - 2 ABANDON IN PLACE EXISTING POOL HEAT EXCHANGER.
 - 3 REMOVE THE EXISTING POOL PUMP.
 - 5 ABANDON IN PLACE EXISTING STEAM BOILER.
 - 6 REMOVE EXISTING HEATING WATER HEAT EXCHANGER.
 - 7 ABANDON IN PLACE EXISTING STEAM-TO-WATER DOMESTIC HEAT EXCHANGER.
 - 8 ABANDON IN PLACE EXISTING CONDENSATE AND FEEDWATER EQUIPMENT.
 - 9 FAN MOTOR TO BE REMOVED AND REPLACED IN NEW CONSTRUCTION PHASE.
 - 10 REMOVE THE EXISTING AIR HANDLER PRE-HEAT COIL.
 - 11 REMOVE THE EXISTING AIR HANDLER REHEAT COIL.
 - 12 EXISTING AIR HANDLER FILTER BANK TO REMAIN.
 - 13 EXISTING CONCRETE PADS TO BE REMOVED.
 - 14 PATCH AND REPAIR GALVANIZED SUPPLY AIR PLENUM AFTER NEW CONSTRUCTION PHASE.
 - 15 EXISTING DAMPER TO REMAIN CLOSED.
 - 16 REMOVE THE EXISTING LINE BETWEEN THE HORIZONTAL EXPANSION TANK ON LEVEL 1 AND THE EXISTING MECHANICAL PIPING IN THE BASEMENT. PATCH AND REPAIR THE EXISTING MECHANICAL PIPING AFTER REMOVING THE PIPE.
 - 17 REMOVE EXISTING ATC DAMPER.
 - 18 EXISTING LOUVER TO REMAIN.



1 MD100
 1/8" = 1'-0"
 0 4' 8' 16'
 NORTH

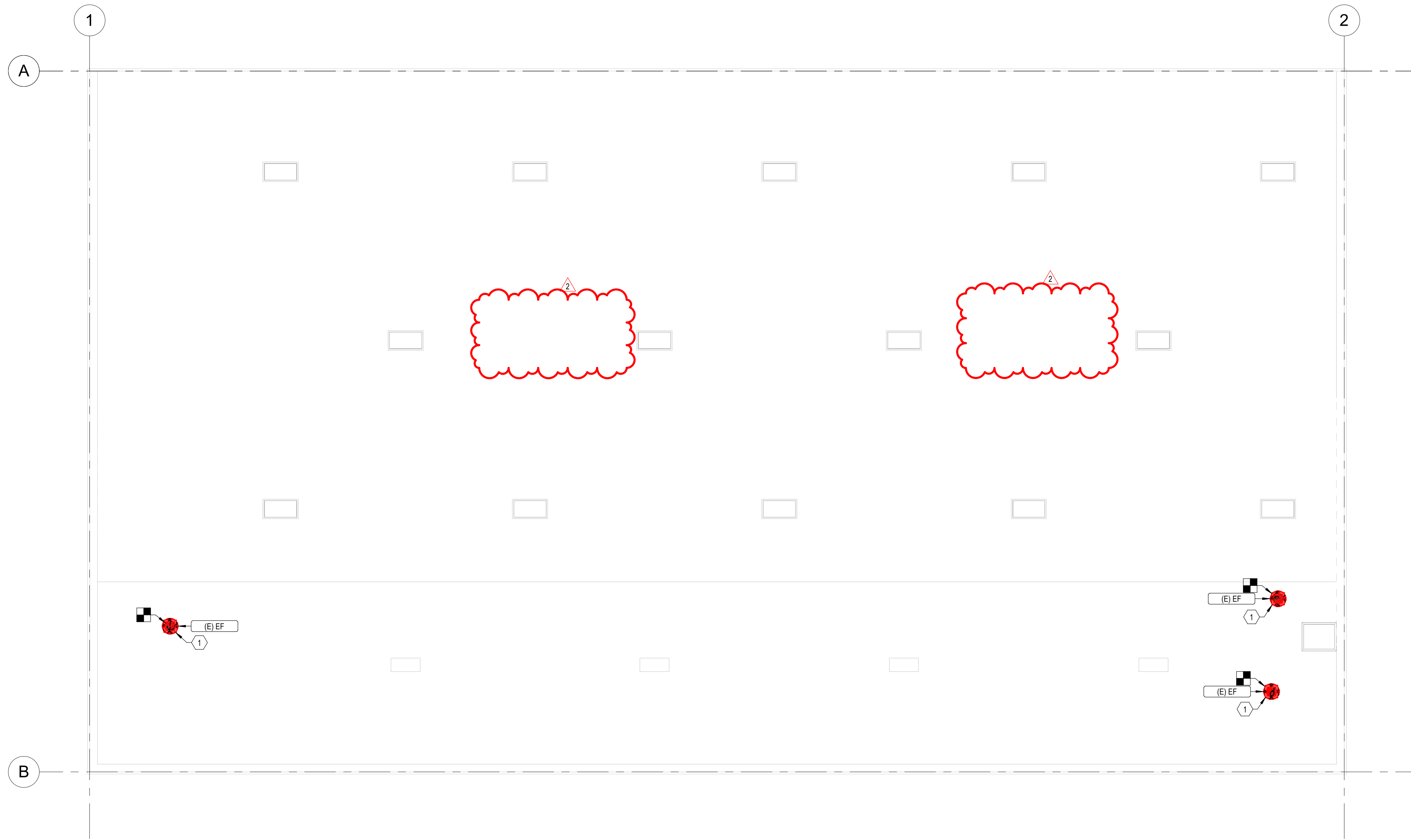
3/12/2024 4:02:29 PM Autodesk Docs: 1123996 - LOD - Indoor Athletic Facility - Municipioool Remodel (23708 - LOD - Indoor Athletic Facility - Municipioool Remodel) (MD100) (4/16)

CONSTRUCTION DOCUMENTS

MARK	2	DESCRIPTION	Autodrum-004
DATE	08.11.2024		
PROJECT #:	123998		
DRAWN BY:	Author		
CHECKED BY:	Checker		
ISSUED:	12.07.2023		



3/12/2024 4:00:03 PM Autodesk Docs: 1123996 - LOD - Indoor Athletic Facility - Municipal Remodel (23708 - LOD - Indoor Athletic Facility - Municipal Remodel) (MD102) (V)



1 ROOF HVAC PLAN
 MD102 1/8" = 1'-0"
 0 4' 8' 16'



KEYED NOTES

REMOVE EXISTING EXHAUST FAN AND SCOP CUBES.



CONSTRUCTION DOCUMENTS



ROOF MECHANICAL
 DEMOLITION PLAN

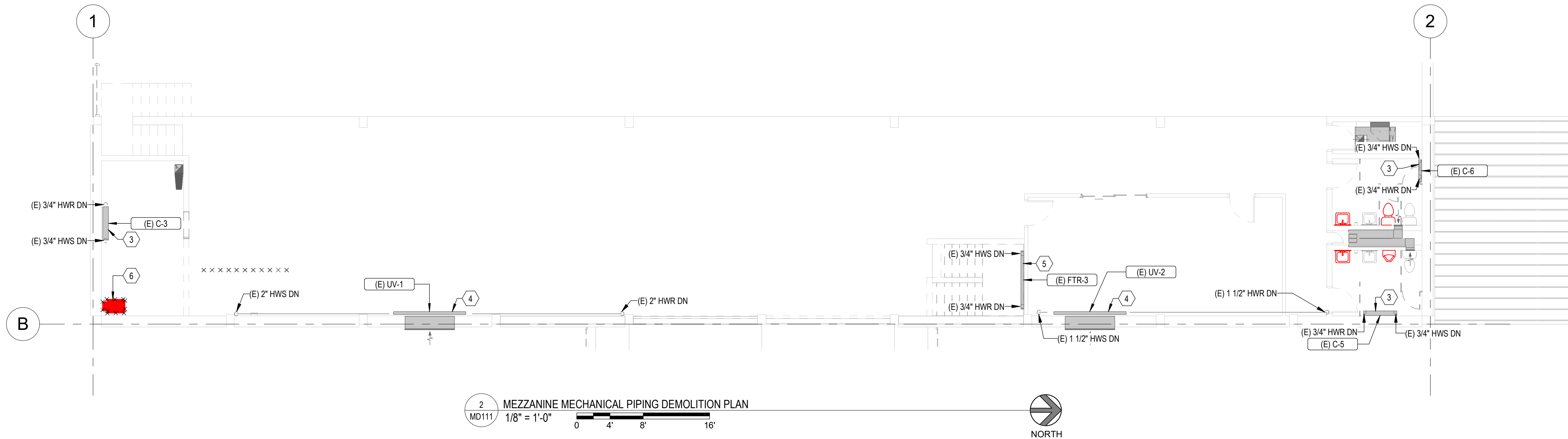
MD102

MARK	DATE	DESCRIPTION
1	08-11-2024	Adendum-004
2		

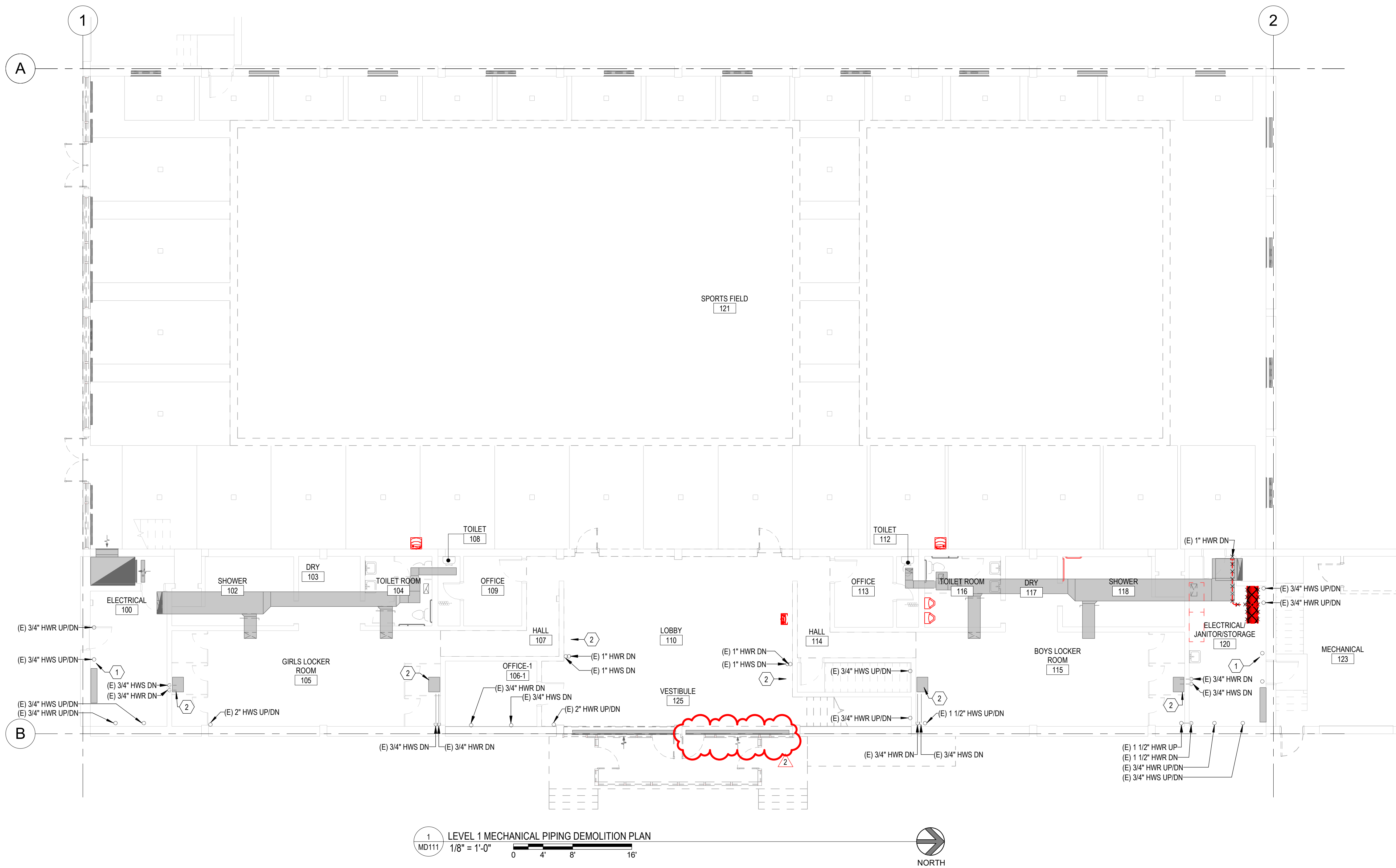
PROJECT #: 123998
 DRAWN BY: Author
 CHECKED BY: Checker
 ISSUED: 12.07.2023

**INDOOR ATHLETIC FACILITY - MUNICIPAL POOL
 REMODEL**
 114 EAST 1000 NORTH, LOGAN UTAH 84321
 OWNER/OPG NAME

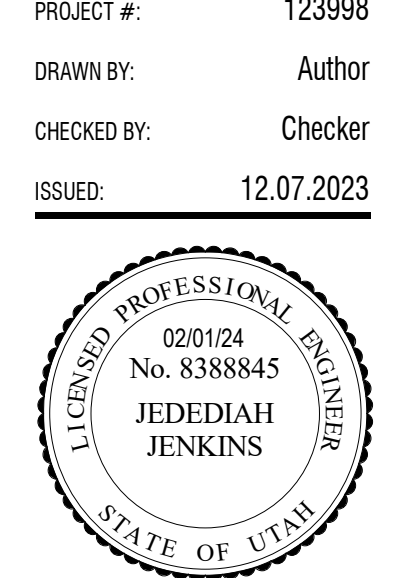
design west | architects
 255 SOUTH 300 WEST
 795 NORTH 400 WEST
 LOGAN, UT 84321
 SALT LAKE CITY, UT 84103



KEYED NOTES	
1	EXISTING CONVECTOR TO REMAIN. REMOVE THE EXISTING CONTROL AND BALANCING VALVES.
2	EXISTING FORCED FLOW HEATER TO REMAIN. REMOVE THE EXISTING CONTROL AND BALANCING VALVES.
3	EXISTING CONVECTOR TO REMAIN. REMOVE THE EXISTING CONTROL AND BALANCING VALVES.
4	EXISTING UNIT VENTILATOR TO REMAIN. REMOVE THE EXISTING CONTROL AND BALANCING VALVES.
5	EXISTING FINNED TUBE RADIATOR TO REMAIN. REMOVE THE EXISTING CONTROL AND BALANCING VALVES.
6	DEMOLISH AND REMOVE EXISTING GAS FIRED, CEILING HUNG, UNIT HEATER, AND ASSOCIATED FLUES THRU ROOF. PATCH AND REPAIR ROOF TO MATCH EXISTING.



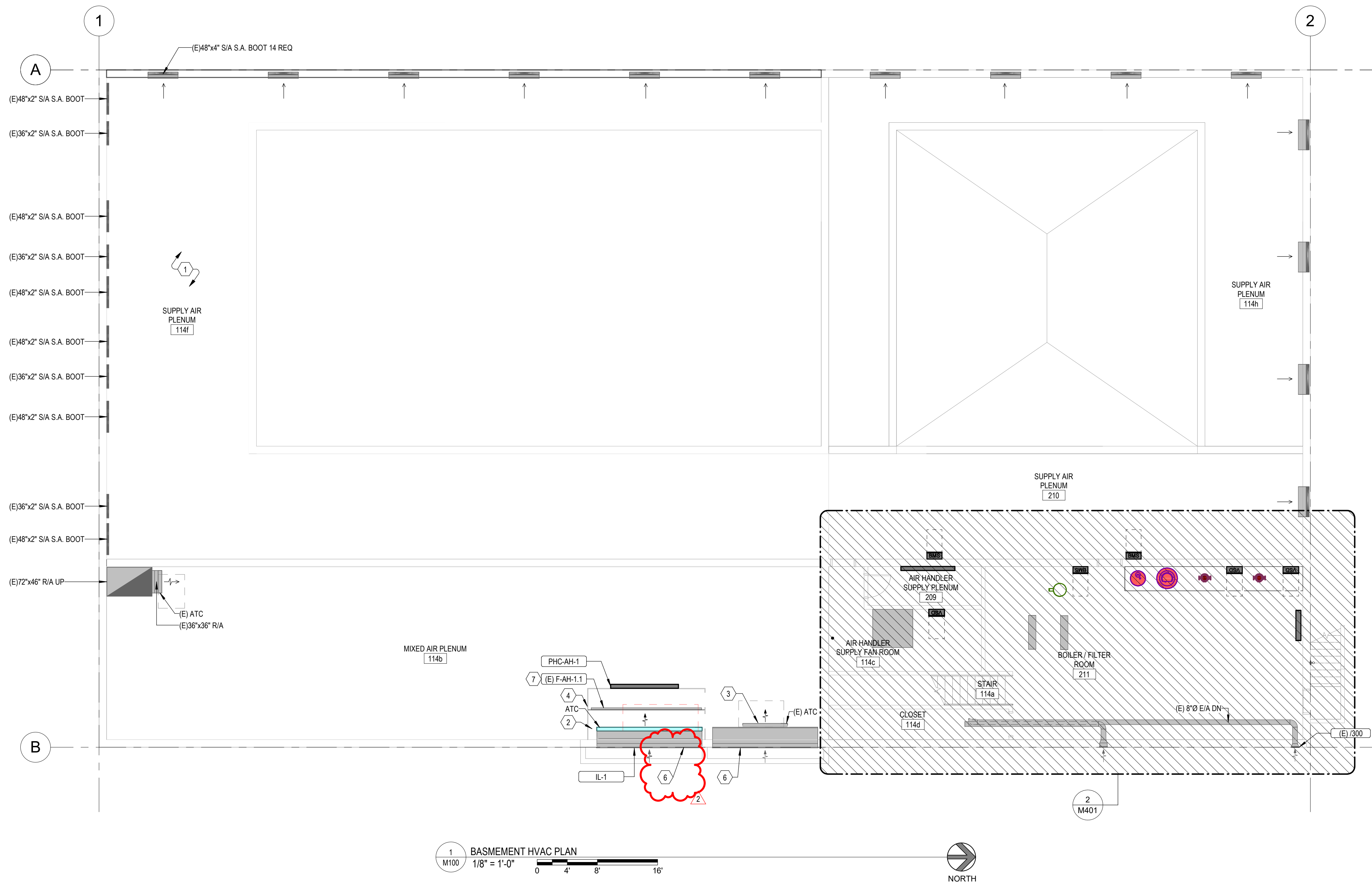
MARK	2	DESCRIPTION	MECHANICAL
DATE	08-11-2024	DATE	
PROJECT #	123998	DRAWN BY	Author
CHECKED BY	Checker	ISSUED	12.07.2023



CONSTRUCTION DOCUMENTS

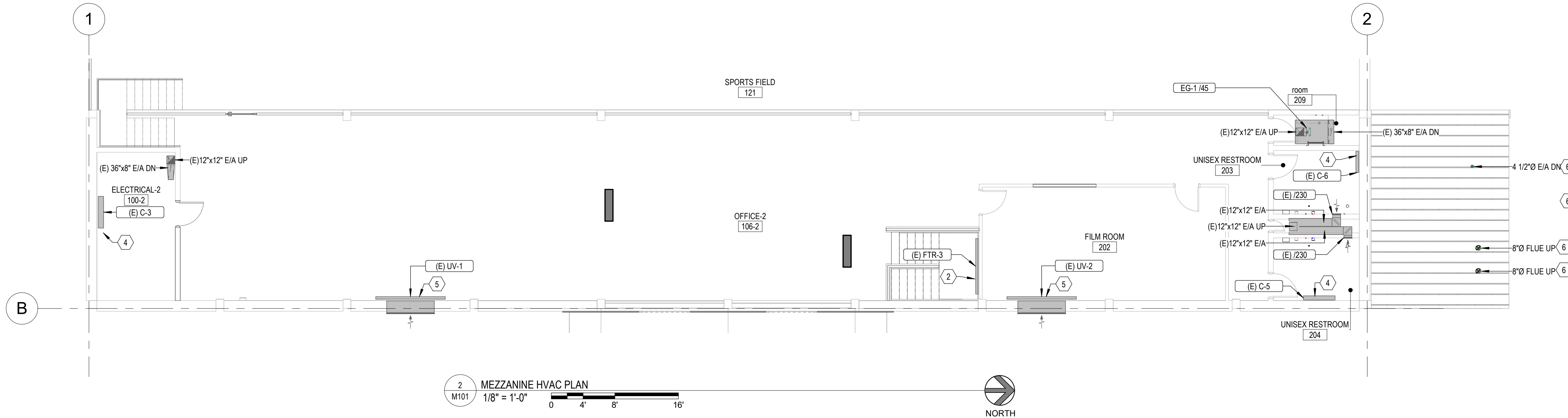
3/12/2024, 4:00:08 PM Autodesk Docs: 1123998 - LOD - Indoor Athletic Facility - Municipal Remodel (23708 - LOD - Indoor Athletic Facility - Municipal Remodel) (MECH_04.rvt)

KEYED NOTES	
1	ALL BOOT FOR ALL SYSTEMS WILL REMAIN THRU NEW CONSTRUCTION PROCESS. TYPICAL.
2	REPLACE EXISTING DAMPER
3	EXISTING DAMPER TO REMAIN CLOSED.
4	EXISTING SHEETMETAL PLENUM.
6	EXISTING LOUVER TO REMAIN IN PLACE
7	EXISTING FILTER BANK TO REMAIN. CONTRACTOR TO FIELD VERIFY THE CONDITION OF THE FILTER BANK AND PROVIDE REPAIRS AS NEEDED, IF ANY. FILTERS SHALL ALSO BE REPLACED AS PART OF THE SCOPE OF WORK.

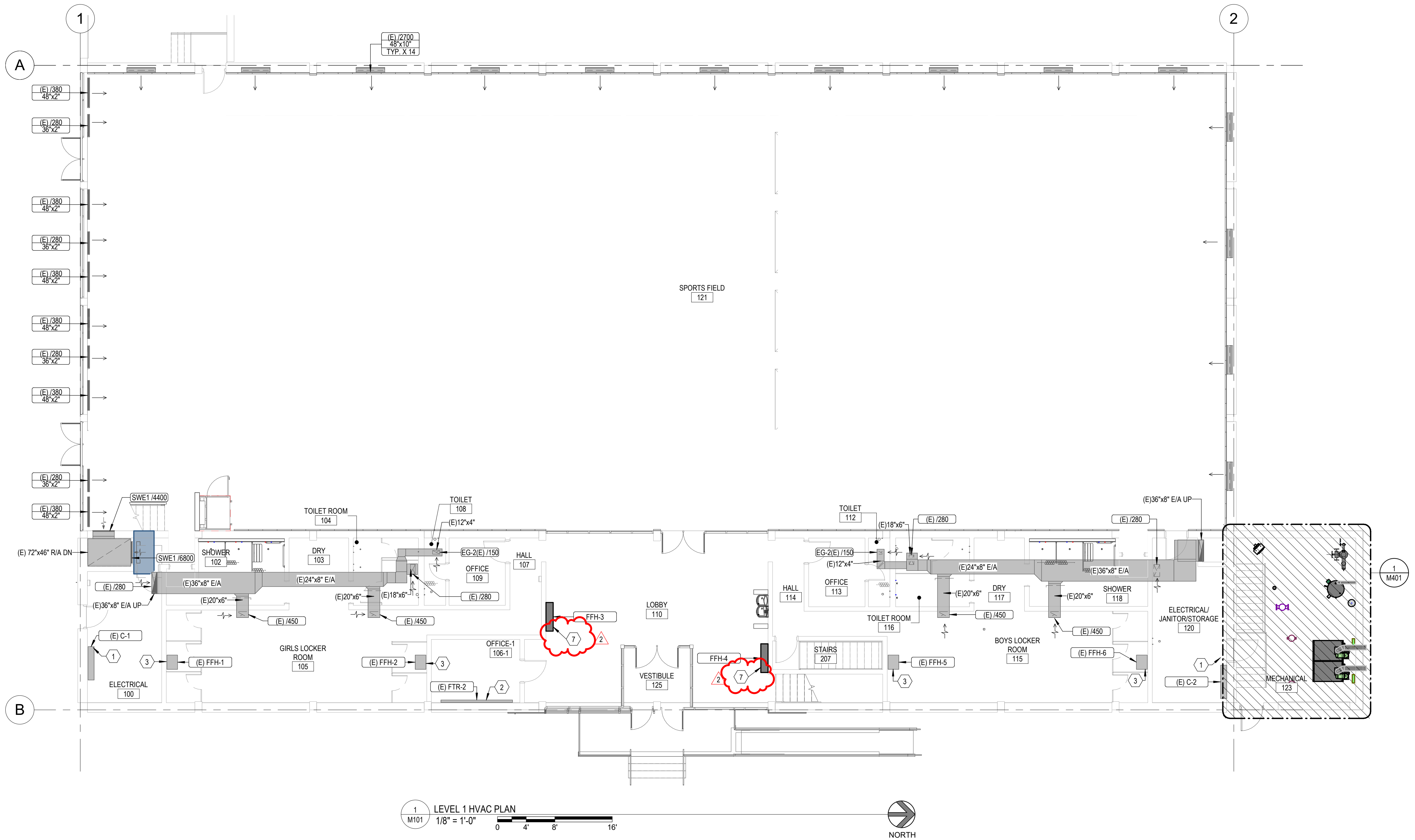


MARK	2	DESCRIPTION	Additional-004
DATE	08-11-2024		
PROJECT #	123998		
DRAWN BY	Author		
CHECKED BY	Checker		
ISSUED	12.07.2023		

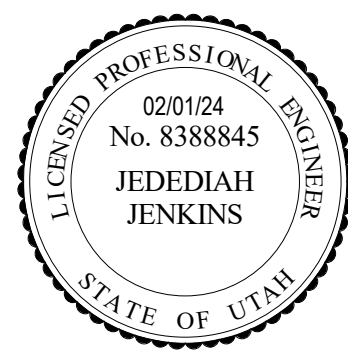




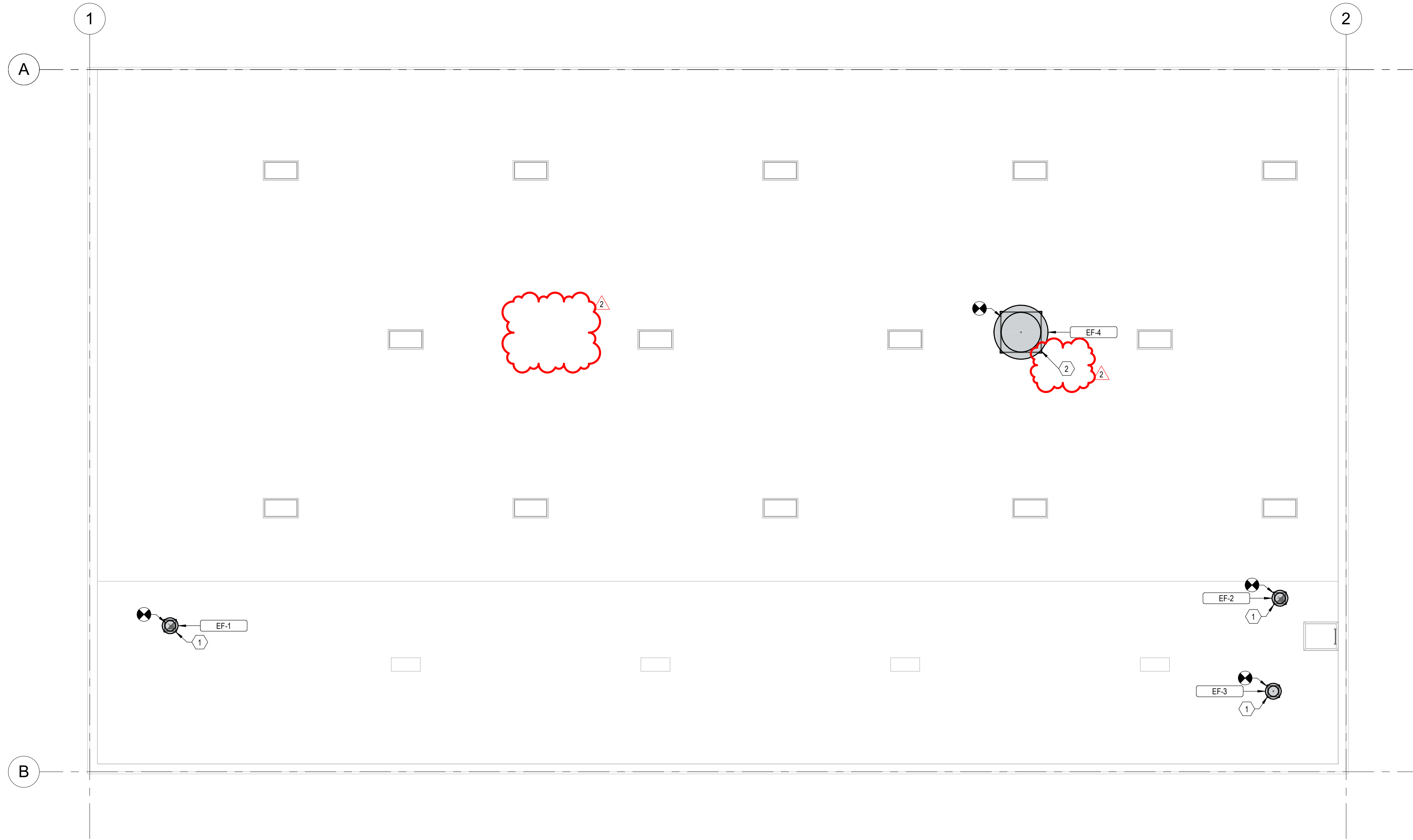
- ### KEYED NOTES
- EXISTING CONVECTOR TO REMAIN. PROVIDE NEW CONTROL AND BALANCING VALVES. SEE SCHEDULES.
 - EXISTING FINNED TUBE RADIATOR TO REMAIN. PROVIDE NEW CONTROL AND BALANCING VALVES. SEE SCHEDULES.
 - EXISTING FORCED FLOW HEATER TO REMAIN. PROVIDE NEW CONTROL AND BALANCING VALVES. SEE SCHEDULES.
 - EXISTING CONVECTOR TO REMAIN. PROVIDE NEW CONTROL AND BALANCING VALVES. SEE SCHEDULES.
 - EXISTING UNIT VENTILATOR TO REMAIN. PROVIDE NEW CONTROL AND BALANCING VALVES. SEE SCHEDULES.
 - PATCH AND SEAL ROOF PENETRATION.
 - NEW CABINET UNIT HEATER. CONNECT TO EXISTING PIPING.



MARK	DESCRIPTION	DATE
2	MEZZANINE HVAC PLAN	08-11-2024

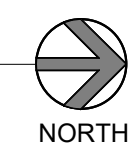


3/12/2024 4:02:58 PM Autodesk Docs: 1123996 - LOD - Indoor Athletic Facility - Municipal Remodel (23708 - LOD - Indoor Athletic Facility - Municipal Remodel) (MCH)_04.rvt



KEYED NOTES	
1	INSTALL NEW EXHAUST FAN AND ROOF CURB.
2	INSTALL NEW EXHAUST FAN ON EXISTING CURB. PROVIDE ADAPTER AS REQUIRED.

1 ROOF HVAC PLAN
 M102 1/8" = 1'-0"
 0 4' 8' 16'



VBFA 40 W. Cache Valley Blvd.
 Building 1, Suite B
 Logan, UT
 O: (435)752-5081
 www.vbfa.com
 VBFA Project #: 23708

CONSTRUCTION DOCUMENTS



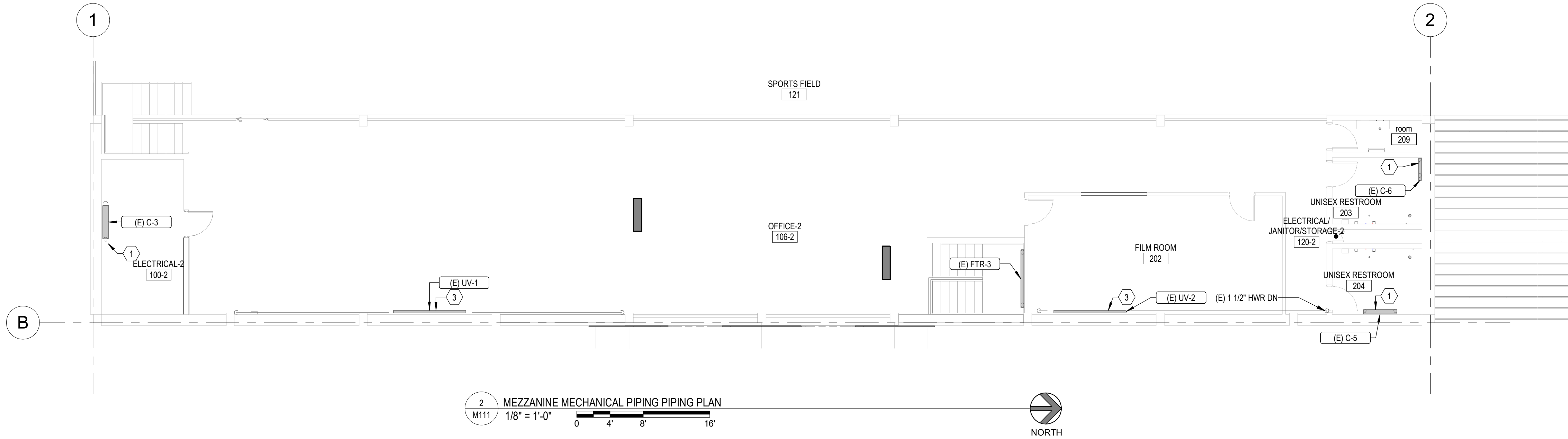
ROOF MECHANICAL PLAN

M102

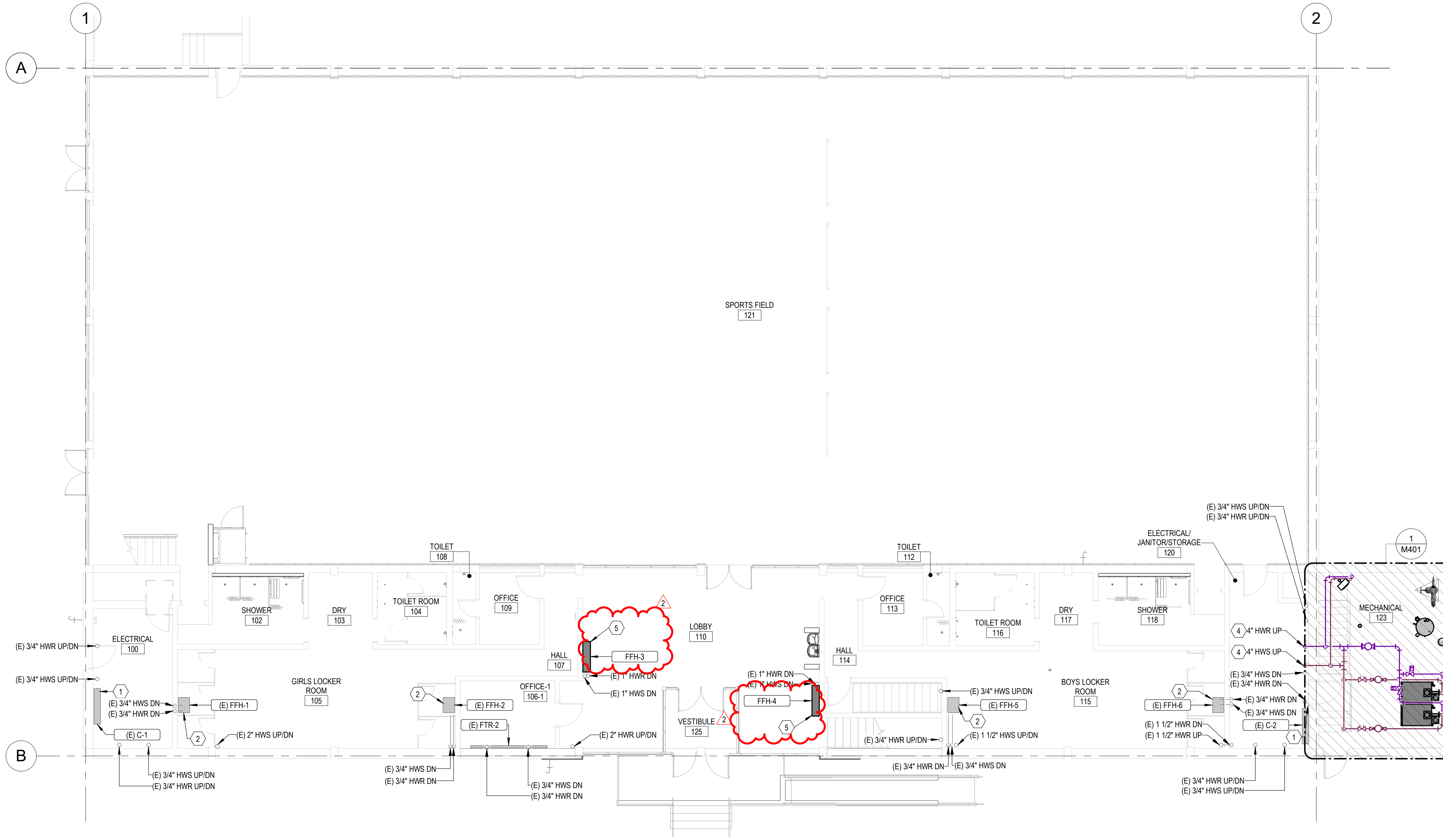
MARK	DATE	DESCRIPTION
2	08.11.2024	Adendum-004
PROJECT #:	123998	
DRAWN BY:	Author	
CHECKED BY:	Checker	
ISSUED:	12.07.2023	

INDOOR ATHLETIC FACILITY - MUNICIPAL POOL REMODEL
 114 EAST 1000 NORTH, LOGAN UTAH 84321
 OWNER/OPG NAME

design west | architects
 255 SOUTH 300 WEST
 795 NORTH 400 WEST
 LOGAN, UT 84321
 SALT LAKE CITY, UT 84103



2 MEZZANINE MECHANICAL PIPING PLAN
1/8" = 1'-0"
0 4 8 16'
NORTH



1 LEVEL 1 MECHANICAL PIPING PLAN
1/8" = 1'-0"
0 4 8 16'
NORTH

- ### KEYED NOTES
- EXISTING CONVECTOR TO REMAIN. PROVIDE NEW CONTROL AND BALANCING VALVES. SEE SCHEDULES.
 - EXISTING FORCED FLOW HEATER TO REMAIN. PROVIDE NEW CONTROL AND BALANCING VALVES. SEE SCHEDULES.
 - EXISTING UNIT VENTILATOR TO REMAIN. PROVIDE NEW CONTROL AND BALANCING VALVES. SEE SCHEDULES.
 - CORE DRILLING WILL BE NEEDED FOR PIPES TO CONTINUE TO THE BASEMENT.
 - NEW FORCED FLOW HEATER. PROVIDE NEW CONTROL AND BALANCING VALVES. CONNECT TO EXISTING PIPES.

MARK	DESCRIPTION	DATE
2	MECHANICAL	08-11-2024

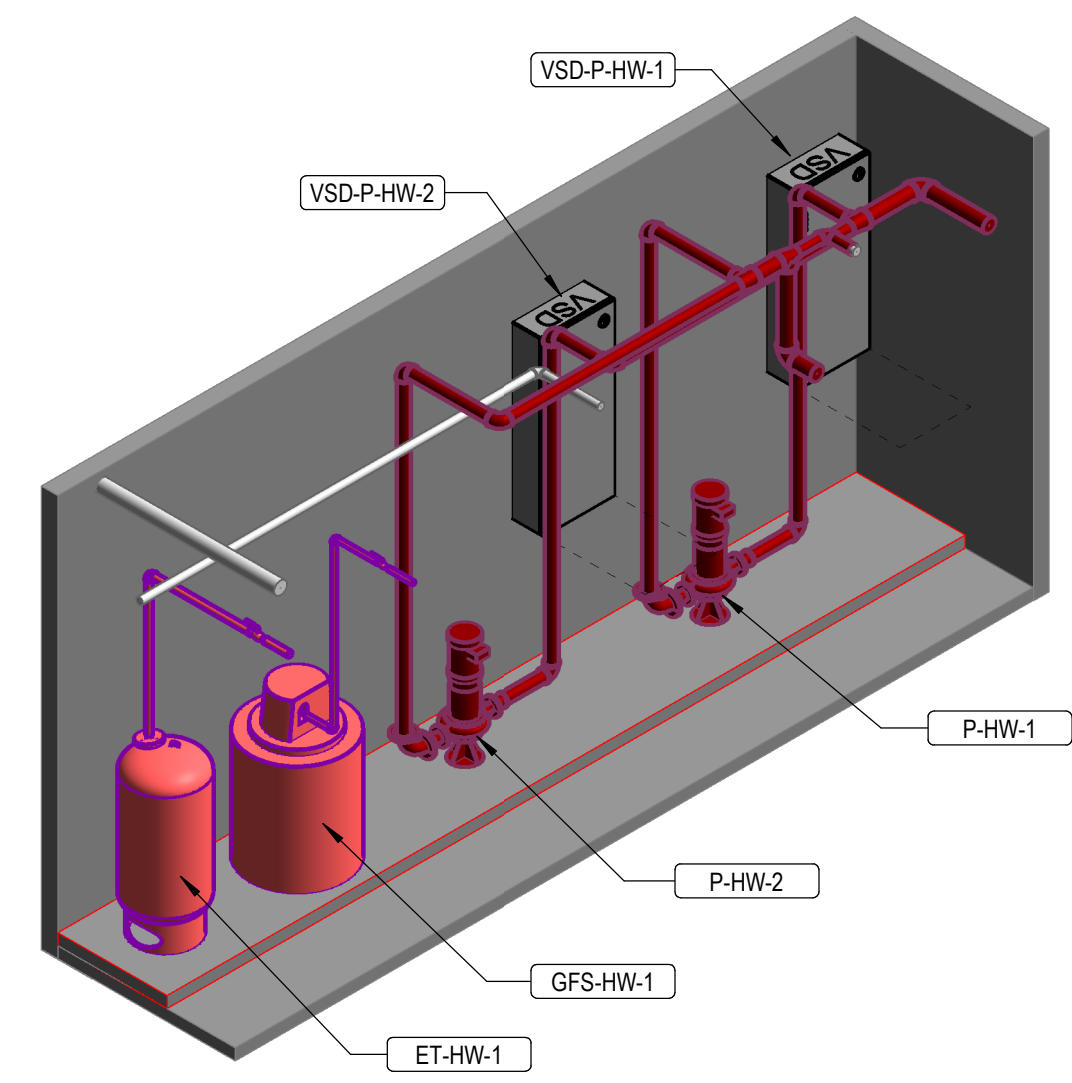
PROJECT #: 123998
DRAWN BY: Author
CHECKED BY: Checker
ISSUED: 12.07.2023



LEVEL 1 &
MEZZANINE
MECHANICAL PIPING
PLAN

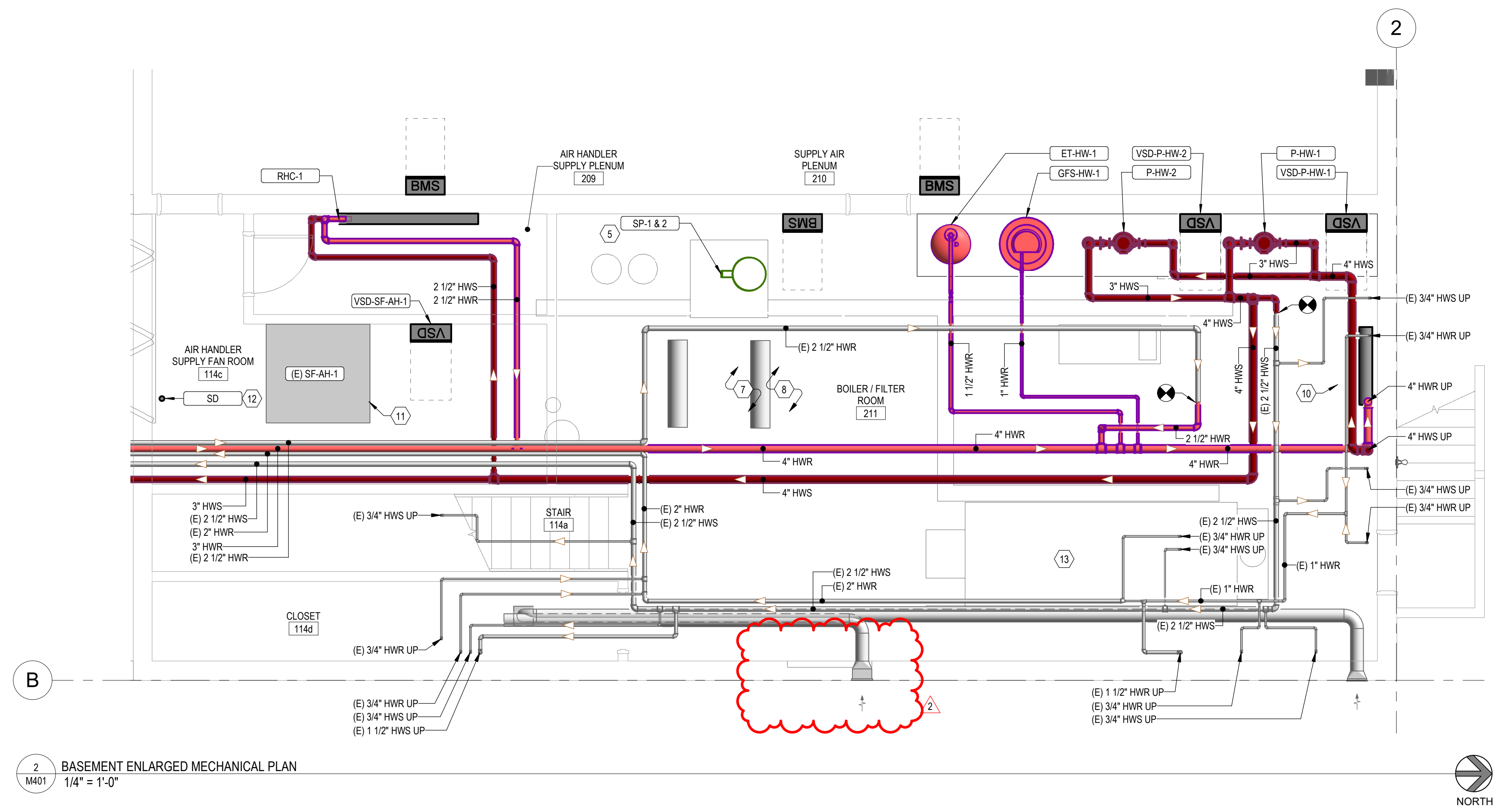
M111

3/12/2024 4:01:02 PM Autodesk Docs: 1123998 - LOD - Indoor Athletic Facility - Municipool Remodel (23708 - LOD - Indoor Athletic Facility - Municipool Remodel) (MECH_04.rvt)

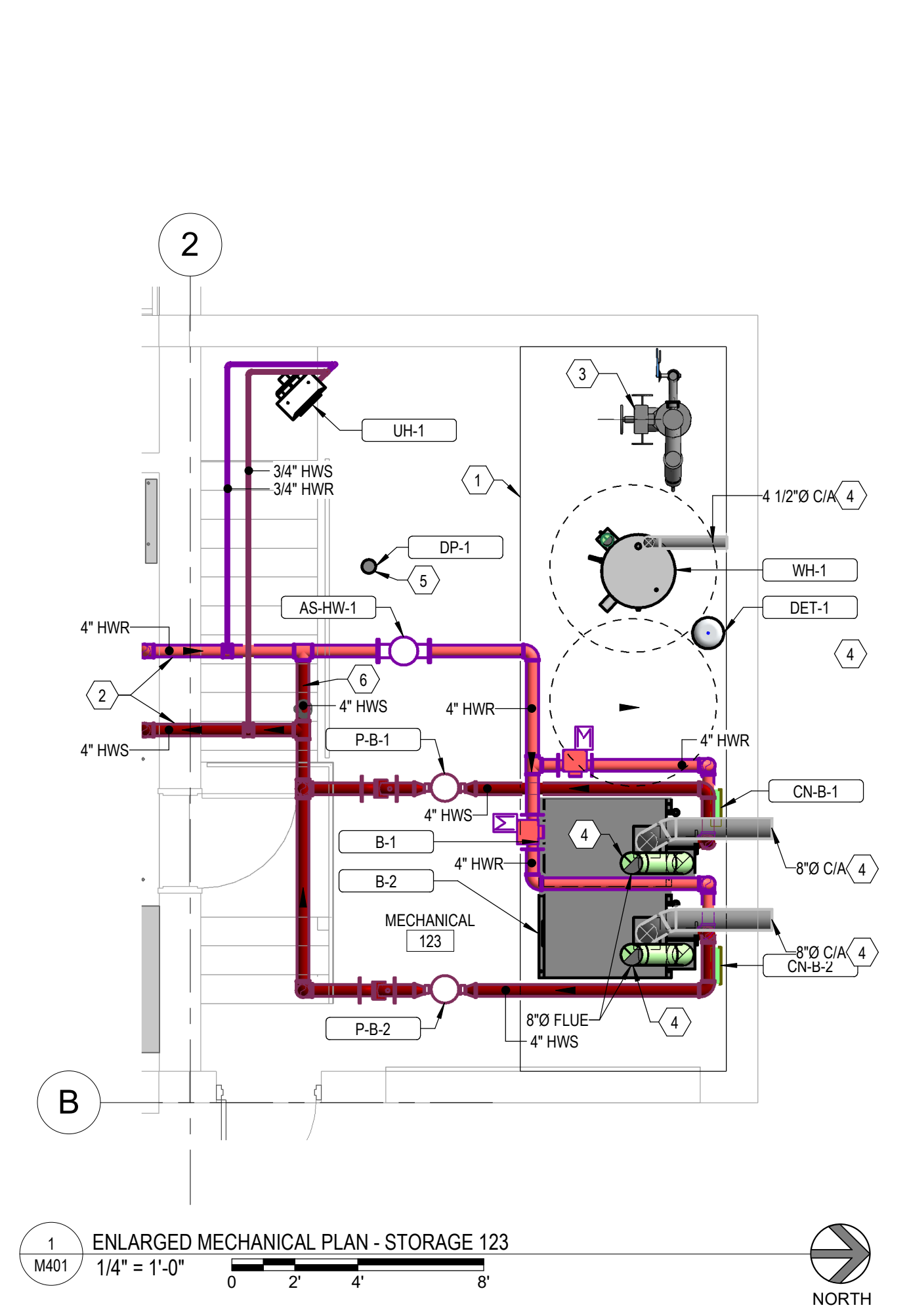


3 MECHANICAL PIPING BOILER/FILTER ROOM ISOMETRIC
M401

#	KEYED NOTES
1	NEW 4" EQUIPMENT HOUSEKEEPING PAD.
2	CORE DRILLING OF MASONRY WALL NEEDED.
3	FIRE RISER TO BE INSTALLED IN THIS LOCATION. SEE FIRE PLANS FOR CONTINUATION.
4	DUCT AND FLUES TO EXIT TO THE OUTSIDE. PATCH AND REPAIR AREAS TO MATCH EXISTING.
5	PLUMBING EQUIPMENT. SEE PLUMBING DRAWINGS.
6	HYDRAULIC DECOUPLER PIPE BETWEEN THE PRIMARY AND SECONDARY PIPING LOOPS.
7	EXISTING EQUIPMENT TO REMAIN SHOWN LIGHT. TYPICAL.
8	NEW EQUIPMENT SHOWN SHADED, TYPICAL.
10	NEW DOMESTIC COLD WATER HEADER. SEE PLUMBING SHEETS.
11	REPLACE EXISTING 15HP FAN MOTOR WITH NEW VFD COMPATIBLE FAN MOTOR.
12	SMOKE DETECTOR TO BE INSTALLED IN THE RETURN AREA FOR THE AIR HANDLER.
13	EXISTING STEAM BOILER ABANDONED IN PLACE



2 BASEMENT ENLARGED MECHANICAL PLAN
M401 1/4" = 1'-0"



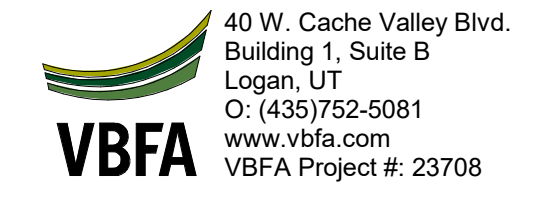
1 ENLARGED MECHANICAL PLAN - STORAGE 123
M401 1/4" = 1'-0"

MARK	DESCRIPTION	DATE	BY
2	As-Built	08-11-2024	As-Built

PROJECT #: 123998
 DRAWN BY: Author
 CHECKED BY: Checker
 ISSUED: 12.07.2023

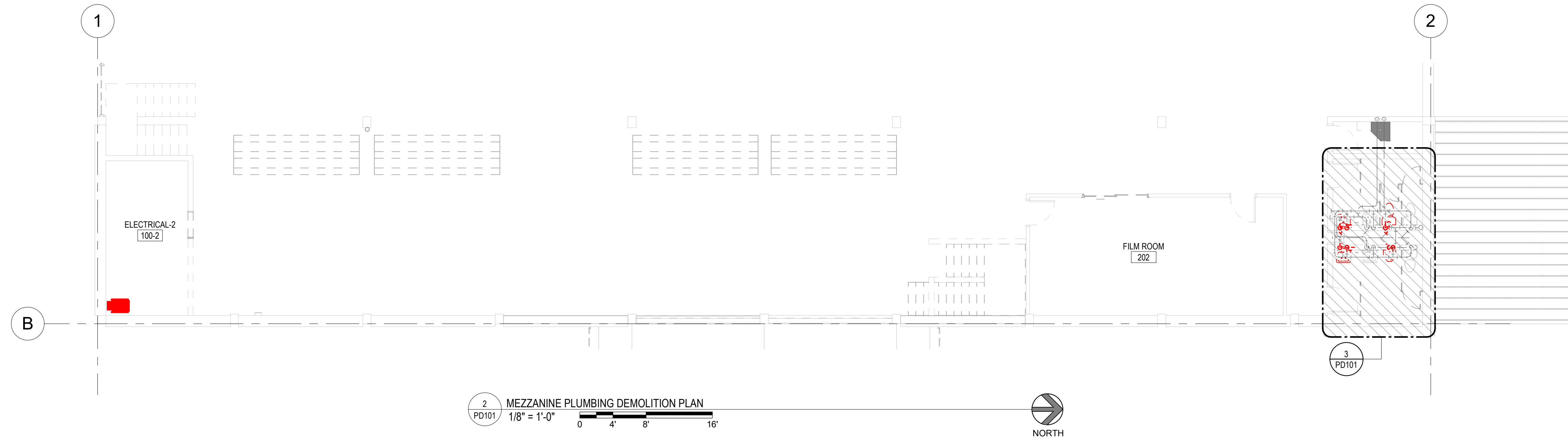


3/12/2024 4:01:08 PM Autodesk Docs: 123998 - LOD - Indoor Athletic Facility - Municipal Remodel 23708 - LOD - Indoor Athletic Facility - Municipal Remodel (MECH) - V4.rvt

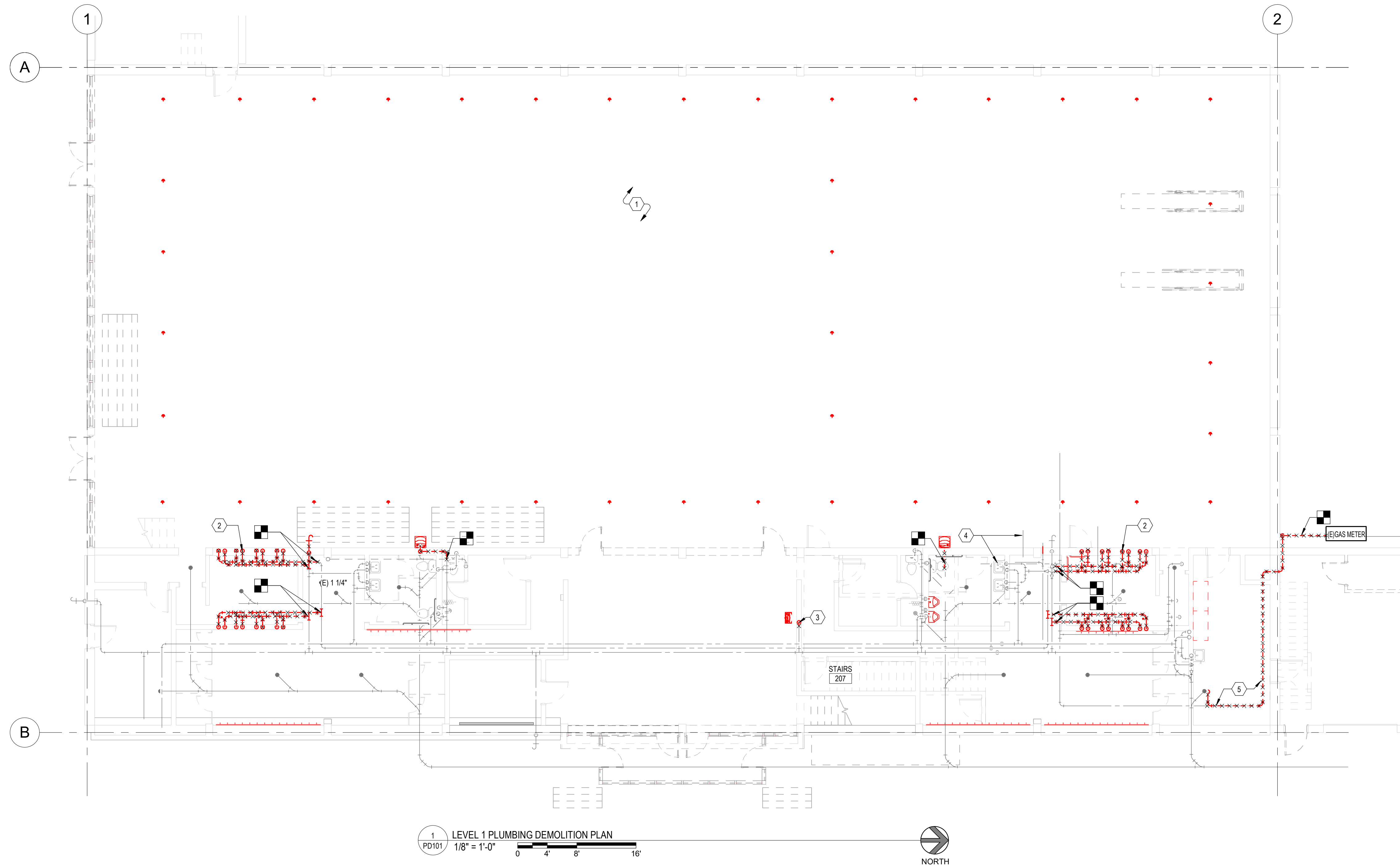


CONSTRUCTION DOCUMENTS

3/12/2024 4:01:21 PM Autodesk Docs: 1123998 - L2D3 - Indoor Athletic Facility - Municipal Remodel (MECH) - V4.rvt

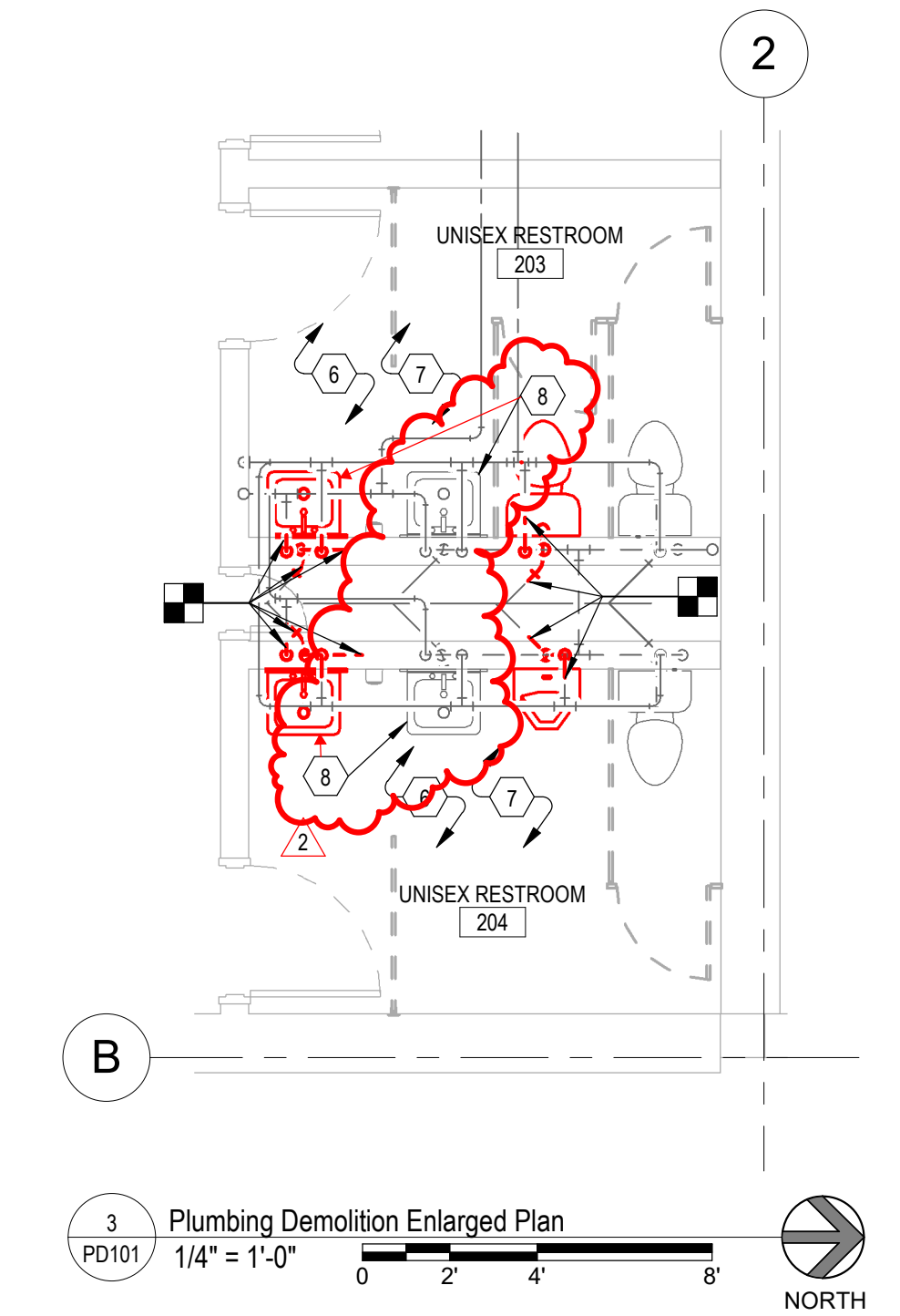


2 MEZZANINE PLUMBING DEMOLITION PLAN
1/8" = 1'-0"



1 LEVEL 1 PLUMBING DEMOLITION PLAN
1/8" = 1'-0"

- ### KEYED NOTES
- 1 ABANDON FIXTURES IN PLACE AND FILL WITH CONCRETE.
 - 2 REMOVE SHOWERS TO MAKE WAY FOR NEW SHOWERS.
 - 3 DEMOLISH AND REMOVE EXISTING DRINKING FOUNTAIN. PREPARE DOMESTIC COLD WATER, WASTE AND VENT PIPING FOR NEW CONNECTIONS TO NEW ELECTRIC WATER COOLER.
 - 4 PIPE SYSTEMS LOCATED IN BASEMENT MECHANICAL ROOM.
 - 5 REMOVE EXISTING NATURAL GAS PIPING. PATCH EXTERIOR WALL PENETRATION TO MATCH EXISTING.
 - 6 OPEN ENDS OF DEMOLISHED PIPES WILL BE CAPPED AT THEIR OPEN ENDS. SEE P101 & P111 FOR MORE INFORMATION.
 - 7 SHOWN PIPES ARE EXISTING AND TO BE DEMOLISHED TO MAKE WAY FOR NEW CONSTRUCTION FOR NEW BATHROOM ORIENTATION.
 - 8 DEMO AND REMOVE EXISTING LAVATORY. PREPARE PIPING FOR RECONNECTION TO NEW LAVATORY.



3 Plumbing Demolition Enlarged Plan
1/4" = 1'-0"

40 W. Cache Valley Blvd.
Building 1, Suite B
Logan, UT
O: (435)752-5081
www.vbfa.com
VBFA Project #: 23708

CONSTRUCTION DOCUMENTS

design west architects
255 SOUTH 300 WEST
795 NORTH 400 WEST
LOGAN, UT 84321
SALT LAKE CITY, UT 84103

**INDOOR ATHLETIC FACILITY - MUNICIPAL
REMODEL**

114 EAST 1000 NORTH, LOGAN UTAH 84321
OWNER/OPG NAME

MARK	DATE	DESCRIPTION
1	02-29-2024	Adendum-003
2	03-11-2024	Adendum-004

PROJECT #: 123998
DRAWN BY: Author
CHECKED BY: Checker
ISSUED: 12.07.2023



LEVEL 1 PLUMBING
DEMOLITION PLAN

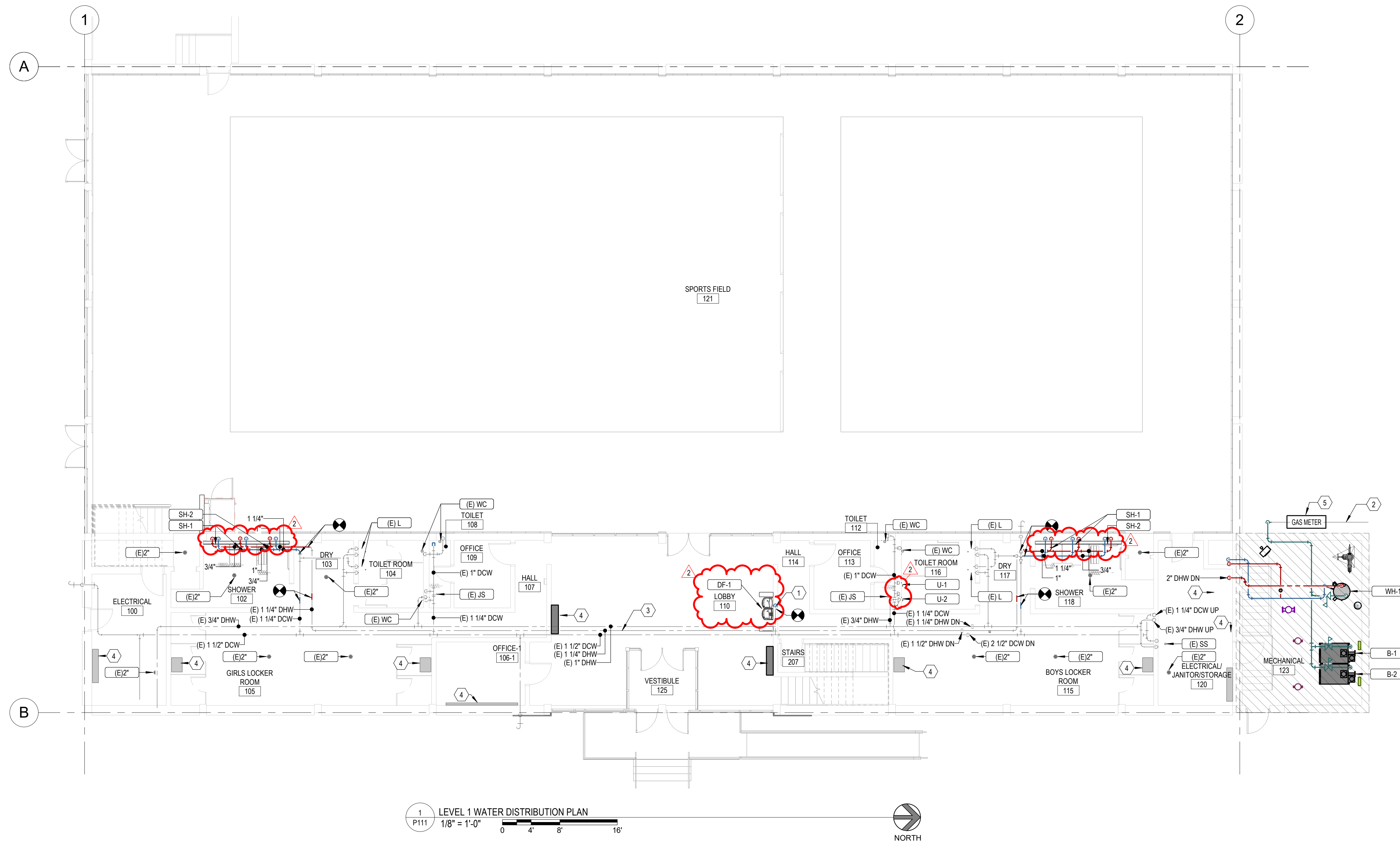
PD101

© COPYRIGHT DESIGN WEST ARCHITECTS 2021

3/12/2024 10:21 AM Autodesk Docs: 1123996 - LOD - Indoor Athletic Facility - Municipal Remodel (MECH) - V4.rvt



- | # | KEYED NOTES |
|---|--|
| 1 | CONNECT WASTE, VENT AND COLD WATER PIPING TO NEW ELECTRIC WATER COOLER. |
| 2 | GAS PIPING TO CONTINUE TO CITY CONNECTION. |
| 3 | ALL PIPING BELOW FLOOR IN CRAWL SPACE. |
| 4 | MECHANICAL EQUIPMENT. SEE MECHANICAL SHEETS. TYPICAL. |
| 5 | EXISTING GAS METER TO BE USED IN NEW GAS CONFIGURATION. |
| 6 | EXISTING HOT AND COLD PIPING TO REMAIN. HOWEVER DEMOLISHED PLUMBING FIXTURES' CONNECTIONS WILL BE DEMOLISHED BACK TO EXISTING MAINS AND CAPPED AT THE EXISTING MAIN. |



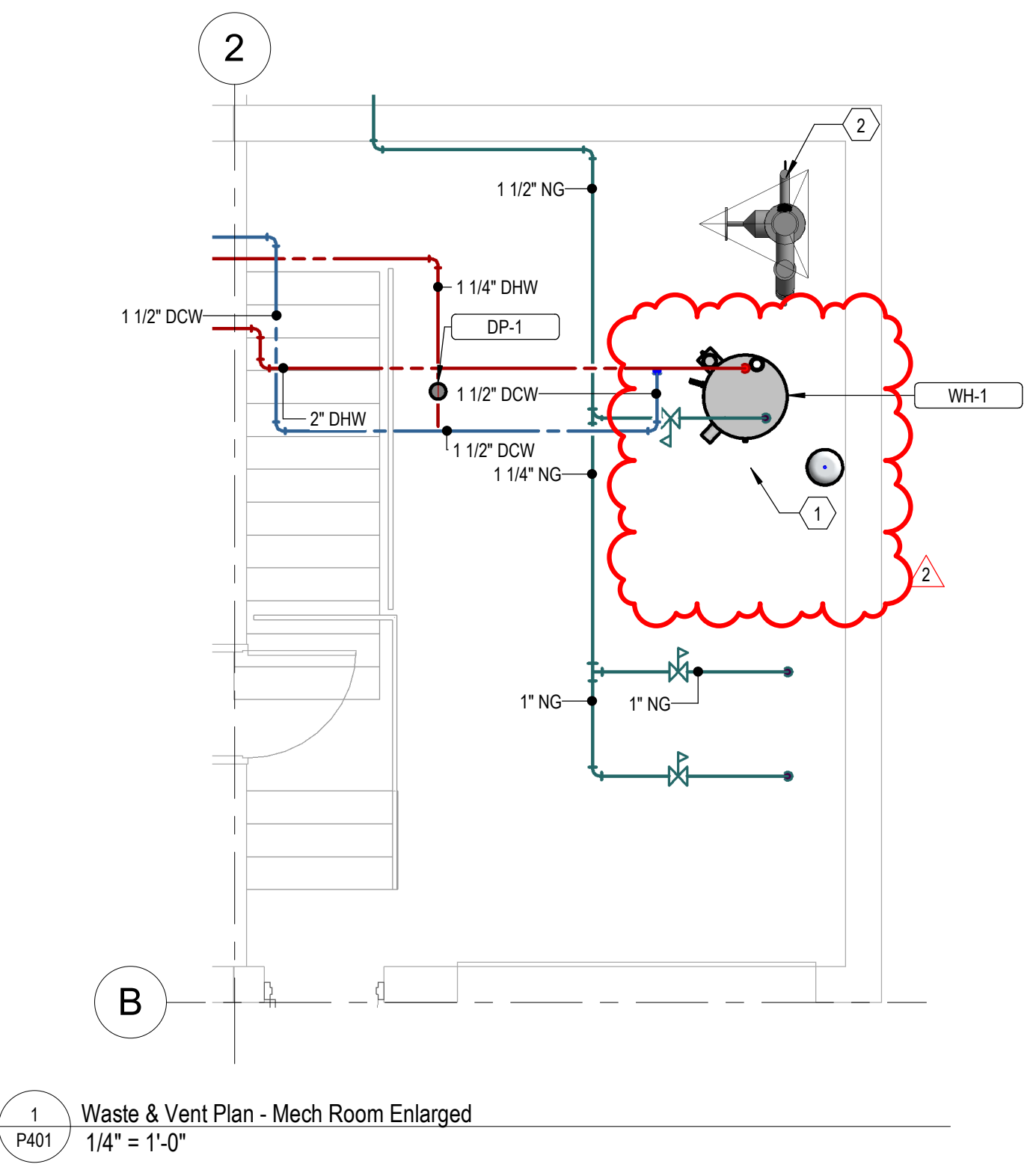
MARK	DATE	DESCRIPTION
1	02-29-2024	Adendum-003
2	03-11-2024	Adendum-004

PROJECT #: 123998
 DRAWN BY: Author
 CHECKED BY: Checker
 ISSUED: 12.07.2023





#	KEYED NOTES
1	SEE P501/4 FOR FULL WATER HEATER DETAIL.
2	FIRE RISER.



1 Waste & Vent Plan - Mech Room Enlarged
1/4" = 1'-0"



CONSTRUCTION DOCUMENTS



ENLARGED WASTE & VENT PLANS

P401

MARK	2
DATE	08.11.2024
DESCRIPTION	Additional-004
PROJECT #:	123998
DRAWN BY:	Author
CHECKED BY:	Checker
ISSUED:	12.07.2023

INDOOR ATHLETIC FACILITY - MUNICIPAL REMODEL
114 EAST 1000 NORTH, LOGAN UTAH 84321
OWNER/OPG NAME

design west | architects
255 SOUTH 300 WEST
795 NORTH 400 WEST
LOGAN UT 84321
SALT LAKE CITY UT 84103

3/12/2024 4:01:28 PM Autodesk Docs: 1123996 - LOD - Indoor Athletic Facility - Municipal Remodel 23708 - LOD - Indoor Athletic Facility - Municipal Remodel (MECH) - V4.rvt

DOMESTIC FIXTURE SCHEDULE																
ID	DESCRIPTION	MANUFACTURER	MODEL	QTY	TRIM		FLOW FIXTURE				INDIRECT WASTE PIPE SIZE	COLD WATER ROUGH-IN PIPE SIZE	HOT WATER ROUGH-IN PIPE SIZE	Image	SPECIFICATION	REMARKS
					TYPE	WATER FLOW	CWT	HWT	MAX. MWT							
DF-1	DRINKING FOUNTAIN	Eikay	EZSTL8WSLK	1		1.1 GPM	50 °F	0 °F	0 °F	1-1/2"	1/2"				TWO LEVEL WALL HUNG WATER COOLER. THE UNIT TO BE WALL HUNG, MOUNTING FRAME, SELF CLOSING EASY TOCH SIDE AND FRONT PUSHBAR CONTROLS.	
L-1	LAVATORY - WALL HUNG	AMERICAN STANDARD	LUCERNE	2	T&S BRASS B-0805-VR-VF 05	0.5 GPM	0 °F	0 °F	0 °F	1-1/2"	1/2"	1/2"			21 X 18-INCH WALL HUNG, VITREOUS CHINA LAVATORY WITH 4" CENTERES. T&S BRASS B-0805-VR-VF05 METERING PUSH HANDLE FAUCET. 0.5 GPM MAXIMUM FLOW AERATOR 0.25 GALLONS PER CYCLE. MAX. OPEN GRID STRAINER. FAUCET TO BE PROVIDED WITH WATTS LFMMV THERMOSTATIC MIXING VALVE TO MEET ASSE 1070. PROVIDE WATTS LF7 DUAL CHECKS IN HOT AND COLD SUPPLIES. PROVIDE VANDAL RESISTANT AERATOR. PROVIDE LOOSE KEY ANGLE STOPS AND BRASS P-TRAP WITH CLEANDUT. COVER ALL EXPOSED PIPING WITH WHITE "HAND-LAV GUARD" PROTECTOR TO MEET ADA REQUIREMENTS.	
SH-1	SHOWER STALL	SYMMONS	9601-P	4	MANUAL	1.5 GPM	40 °F	120 °F	105 °F	2"	3/4"	3/4"			PACKAGED SHOWER UNIT, TEMPTROL PRESSURE BALANCE VALVE WITH TEMPERATURE STOP, 1.5 GPM FLOW RESTRICTOR. ADJUST HOT WATER HANDLE STOP TO 108 DEGREES F.	
SH-2	SHOWER STALL - ADA	SYMMONS	T736	2	MANUAL	1.0 GPM	40 °F	120 °F	105 °F	2"	3/4"	3/4"			PACKAGED SHOWER UNIT WITH HAND SPRAY AND HOSE, TEMPTROL PRESSURE BALANCE VALVE WITH TEMPERATURE STOP, 1.5 GPM FLOW RESTRICTOR, HAND SPRAY UNIT WITH FLEXIBLE HOSE, 36" SLIDE BAR, WALL CONNECTION AND IN-LINE VACUUM BREAKER. ADJUST HOT WATER HANDLE STOP TO 108 DEGREES F.	
U-1	URINAL	AMERICAN STANDARD	WASHBROOK	1	BATTERY		40 °F		40 °F			3/4"			WALL HUNG URINAL WITH WASHOUT ACTION, TOP SPUD, SIZE 18" WITH INTEGRAL EXTENDED SHIELDS SUPPORTED BY THROUGH GOING BOLTS AND C.P. NUTS. SOLAR POWERED SENSOR ACTIVATED FLUSHOMETER.	
U-2	URINAL	AMERICAN STANDARD	WASHBROOK	1	BATTERY		40 °F		40 °F			3/4"			WALL HUNG URINAL WITH WASHOUT ACTION, TOP SPUD, SIZE 18" WITH INTEGRAL EXTENDED SHIELDS SUPPORTED BY THROUGH GOING BOLTS AND C.P. NUTS. SOLAR POWERED SENSOR ACTIVATED FLUSHOMETER.	
Grand total: 11																

GAS-FIRED WATER HEATER SCHEDULE																
ID	MANUFACTURER	MODEL NO.	GAS-FIRED HEAT EXCHANGER				WATERSIDE				THERMAL EFF	UNIT WEIGHT	MCA	VOLT	PH	REMARKS
			INPUT	CAP	EFF	STAGES	FUEL PRESS AVAIL	STORAGE RECOVERY	VOL	MAX TEMP RISE						
WH-1	AO SMITH	ACT-199I-N	188667 Btu/h	199000 Btu/h	93.0%	0	150.0 psi	226 gal/h	0 gal	140 °F	93%	71 lb	5.0 A	120 V	1	1-2

1. WATER HEATER SHALL BE SET TO 110F DISCHARGE TEMPERATURE.
2. UNITE COMPLETE WITH CONDENSATE NEUTRALIZER.

SUMP PUMP SCHEDULE														
ID	MANUFACTURER AND MODEL NUMBER	LOCATION	QUANTITY	TYPE	FLUID			PUMP			ELECTRICAL			NOTES
					RATE (GPM)	WORKING FLUID	LOSS (FT)	EFFICIENCY (%)	CONSTRUCTION	MOTOR SIZE (HP)	VOLT/PH/Hz			
SP-1 & 2	LIBERTY PUMP 1102LE51M	BASEMENT	1	IMPELLER	35	WASTE WATER	20	21	21	CAST IRON	0.5	115/1/60	1-3	

1. SP-1 & SP-2 ARE PART OF A PACKAGED DUPLEX PUMP SYSTEM
2. DUPLEX PUMP SYSTEM SHALL BE EQUIPPED WITH THE FOLLOWIGN ACCESSORIES:
 DUPLEX CONTROL SYSTEM PDC-115-2 WITH THE FOLLOWIGN APPURTENANCES*
 115 VOLT 20 AMP PLUG POWER CONNECTION.
 NEMA 1 INDOOR RATED ENCLOSURE.
 DUPLEX PUMP CONTROL: PUMP STARTER, ALARM DEVICE, PUMP ALTERNATOR, VISUAL & AUDIBLE ALARM, AND LIGHT SYSTEM WITH SILENCE SWITCH
 TWO FLOATS, PUMP ON AND PUMP OFF, ELECTRICAL DISCONNECT.
3. THE SYSTEM SHALL BE FACTORY PRE-ASSEMBLED WITH PUMPS, DISCHARGE PIPE NIPPLES AND FLOATS PRE-MOUNTED IN THE BASIN.

DOMESTIC PUMP SCHEDULE												
ID	MANUFACTURER AND MODEL NUMBER	LOCATION	TYPE	FLUID			PUMP CONSTRUCTION	EFFICIENCY (%)	ELECTRICAL			NOTES
				FLOW (GPM)	WORKING FLUID	PRESSURE LOSS (FT)			MOTOR SIZE (HP)	MOTOR SPEED (RPM)	V / PH / HZ	
RCP-1	GRUNDFOS UPS 15-58 FRC	STORAGE 123	INLINE	1	DHW-R	15	CAST IRON	3.7	0.08		120/1/60	

DOMESTIC EXPANSION TANK SCHEDULE										
ID	MANUFACTURER AND MODEL NUMBER	LOCATION	TYPE	FLUID		TANK SIZE (GAL)	PHYSICAL			NOTES
				WORKING FLUID	MAX ACCEPTANCE VOLUME (GAL)		RELIEF VALVE (PSI)	HEIGHT/DIAMETER (IN)	NPT FITTING (IN)	
DET-1	AMTROL ST-447C	STORAGE 123	BLADDER	DHW-R	53.00	53.0	150	45"/24"	2"	

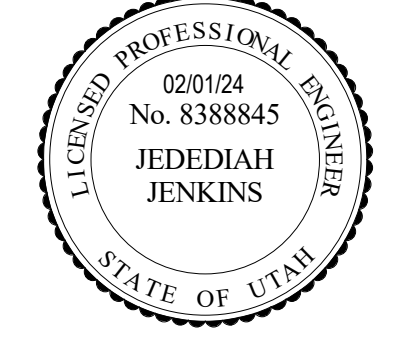
DOMESTIC PRV SCHEDULE								
ID	MANUFACTURER AND MODEL NO.	LOCATION	SERVICE	TYPE	CAPACITY (GPM)	INLET PRESSURE (PSI)	SIZE (IN)	NOTES
PRV-1	WATTS LF 223	BOILER/FILTER ROOM 211	DCW	DIRECT	41	50	2	

design west | architects
 255 SOUTH 300 WEST
 795 NORTH 400 WEST
 LOGAN UT 84321
 SALT LAKE CITY UT 84103

INDOOR ATHLETIC FACILITY - MUNICIPAL POOL REMODEL
 114 EAST 1000 NORTH, LOGAN UTAH 84321
 OWNER/OPG NAME

MARK	DATE	DESCRIPTION
1	02-29-2024	Adendum-003
2	03-11-2024	Adendum-004

PROJECT #: 123998
 DRAWN BY: Author
 CHECKED BY: Checker
 ISSUED: 12.07.2023



PLUMBING SCHEDULES
P601

© COPYRIGHT DESIGN WEST ARCHITECTS 2021

CONSTRUCTION DOCUMENTS

