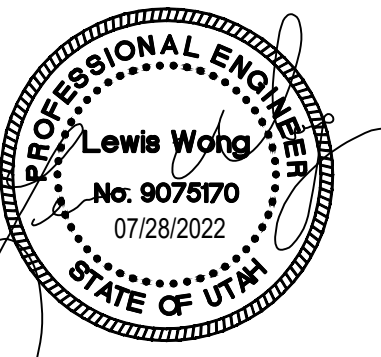




**VBFA**  
www.vbfa.com

181 East 5600 South  
Murray, UT 84107  
801.530.3148 T  
801.530.3150 F



Original drawings remain the property of the Engineer and as such the Engineer retains total ownership and control. The design represented by these drawings are sold to the client for a one time use, unless otherwise agreed upon in writing by the Engineer.  
• Van Boerum & Frank Assoc., 2021

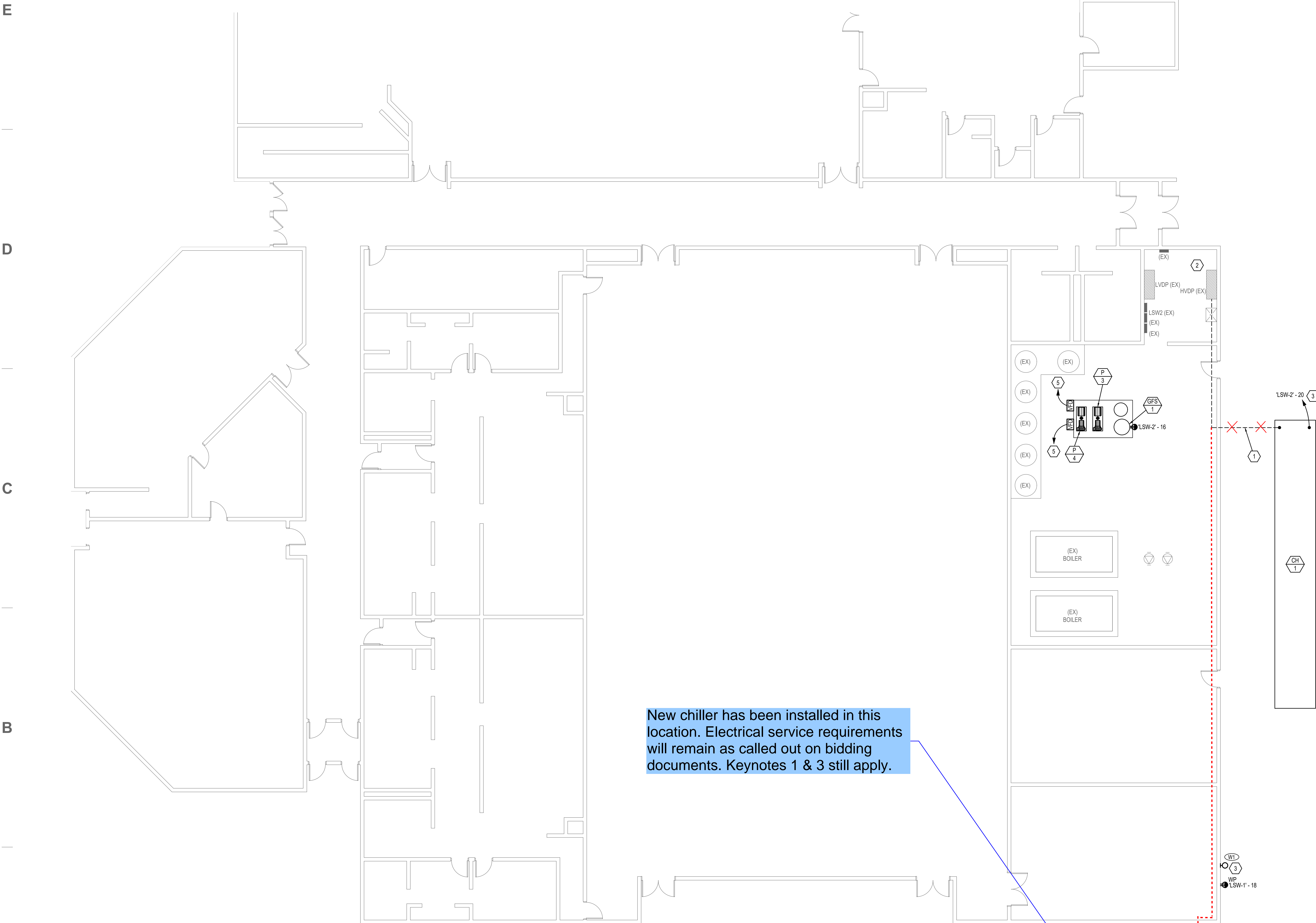
**ALICE C. HARRIS INTERMEDIATE SCHOOL COOLING UPGRADE**  
515 NORTH HUSKY WAY (800 WEST), TREMONTON, UTAH 84337

**# KEYED NOTES**

- APPROXIMATE CONDUIT ROUTING, REFER TO EQUIPMENT SCHEDULE FOR SIZING, TO BE CONNECTED TO A NEW 70A3P CIRCUIT BREAKER WITHIN EXISTING MAIN DISTRIBUTION PANEL HVDP. REFER TO EQUIPMENT SCHEDULE FOR MORE DETAIL.
- PROVIDE (1) 1000A3P & (2) 70A3P CIRCUIT BREAKERS WITH AIC RATINGS THAT MATCH EXISTING BREAKERS/GEAR.
- INSTALL NEW FIXTURE AS SCHEDULED. MOUNT NEW FIXTURE AT SAME HEIGHT AS EXISTING BUILDING MOUNTED FIXTURES. CONNECT NEW FIXTURE TO CIRCUIT/CONTROLS FOR EXISTING BUILDING MOUNTED FIXTURES. PROVIDE (1) 3/4" C WITH (3) #12 AS REQUIRED. REFER TO LIGHT FIXTURE SCHEDULE FOR MORE DETAIL.
- APPROXIMATE CONDUIT ROUTING FOR NEW CHILLER "C-1". REFER TO EQUIPMENT SCHEDULE FOR CONDUIT AND CONDUCTOR SIZING.
- ROUTE CONDUIT AND CONDUCTORS, REFER TO EQUIPMENT SCHEDULE FOR SIZING, TO BE CONNECTED TO A NEW 70A3P CIRCUIT BREAKER WITHIN EXISTING MAIN DISTRIBUTION PANEL HVDP. REFER TO EQUIPMENT SCHEDULE FOR MORE DETAIL. PROVIDE UNISTRUT SYSTEM NEEDED TO MOUNT VFD.

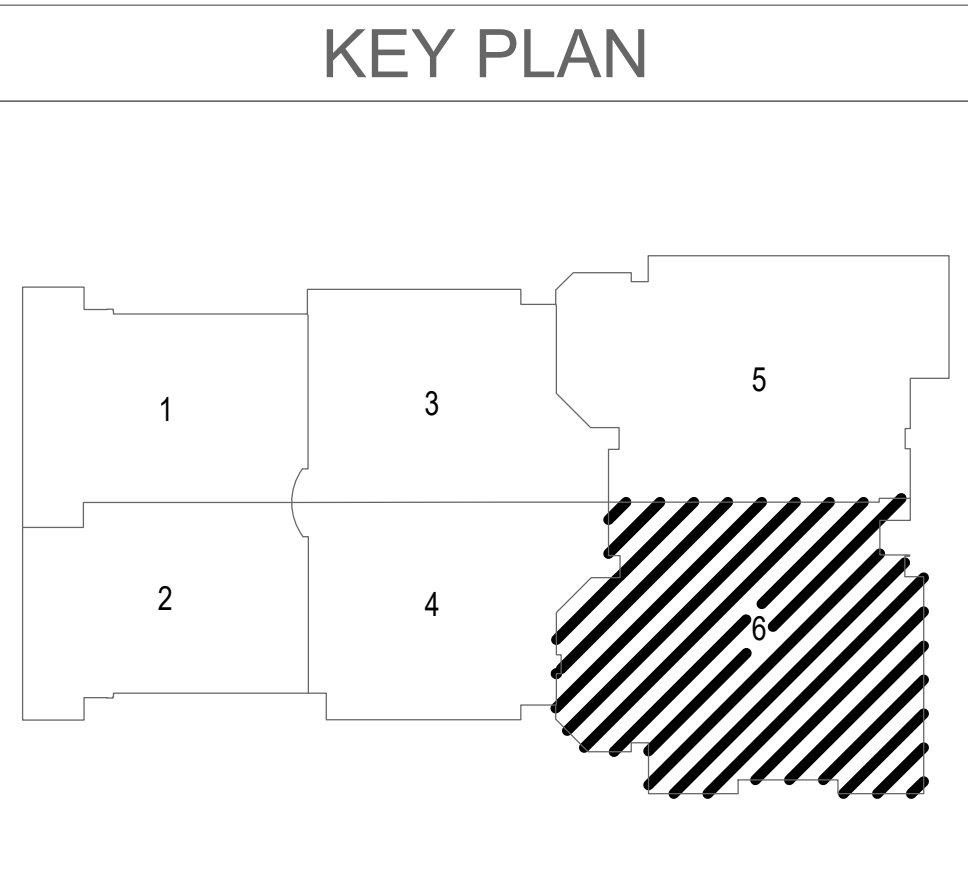
**GENERAL NOTES**

- EC SHALL COORDINATE WITH ALL OTHER TRADES DURING DEMOLITION AND CONSTRUCTION TO FACILITATE TIMELY WORK.
- ALL AREAS ARE TO BE KEPT CLEAN AND CLEAR OF DEBRIS AT ALL TIMES.
- CONTRACTOR SHALL PATCH AND REPAIR ALL WALLS, CEILING ETC. TO MATCH EXISTING CONDITIONS. PENETRATIONS SHALL BE SEALED WITH FIRE RATED CAULK.
- ROUTE ALL CONDUIT IN A NEAT AND ORDERLY FASHION. ALL CONDUIT SHALL BE CONCEALED ABOVE CEILINGS OR IN WALLS IN FINISHED SPACES UNLESS OTHERWISE INDICATED ON THE PLANS.
- EXISTING DEVICES SHOWN ON SHEETS ARE GATHERED FROM AS-BUILT DRAWINGS AND FIELD INVESTIGATION. NOT ALL DEVICES ARE SHOWN. DEVICE PLACEMENT IS SCHEMATIC AND NOT EXACT. CONTRACTOR TO FIELD VERIFY FOR EXACT LOCATIONS AND COORDINATE WORK WITH ALL OTHER DEVICES, EQUIPMENT, CONDUIT, ETC. WHETHER OR NOT SHOWN TO COMPLETE PROJECT.
- DEVICES/EQUIPMENT SHOWN IN GRAY ARE EXISTING TO REMAIN. PRESERVE AND PROTECT. MAINTAIN EXISTING CIRCUIT INTEGRITY.
- PROVIDE CLEAR, TYPED, P-TOUCH LABELS ON ALL NEW DEVICES/EQUIPMENT INDICATING THE PANEL AND CIRCUIT NUMBER IT IS TIED TO. LABEL SHALL BE 1/8" LONGER THAN TEXT ON BOTH ENDS.
- PROVIDE UPDATED TYPED CIRCUIT DIRECTORY WITH UNIQUE CIRCUIT DESCRIPTIONS PER NEC 408.4 FOR PANELS AFFECTED BY THIS PROJECT.
- ALL CORE DRILLING IS THE RESPONSIBILITY OF THE ELECTRICAL CONTRACTOR.



New chiller has been installed in this location. Electrical service requirements will remain as called out on bidding documents. Keynotes 1 & 3 still apply.

**1 AREA 6 - ELECTRICAL POWER PLAN**  
EP1.6 SCALE: 1/8"=1'-0"



REVISIONS	

VBFA PROJECT #:	21493
CHECKED BY:	KC
DRAWN BY:	AC
CURRENT ISSUE DATE:	07.28.2022

**AREA 6 - ELECTRICAL PLAN**

**EP1.6**