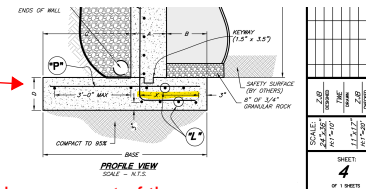


QUESTIONS FOR OWNER /ARCHITECT / ENGINEERS

Mountain View Park Reconstruction
February 28, 2023

1. What bid item should the concrete curb wall demolition go under?
Bid item #6 - Remove existing concrete curbing
2. What are the dimensions of the existing curb wall?
Curb wall dimensions slightly vary. Typical 12" high & 8"-6" Wide. Site visit will help determine the "Match Existing Curb Wall" call out.
3. What is the new 12" curb wall thickness?
See response from question #2.
4. Is any reinforcing required in the 12" curb wall?
It is unknown if the existing curb has any rebar reinforcement. It is not a requirement to have, but the city's preference would be to match the existing curb.
5. There is a detail for concrete curb and gutter, but none shown on plans. Please clarify.
Details are from City Standard Drawings. Many items for this projects will need to be tied into existing conditions in the field. Bidder should plan on site visit to assess existing conditions and dimensions to match before submitting bid.
6. There is a detail for concrete waterway, but none shown on plans. Please clarify.
Details are from City Standard Drawings. Some items will not be required for this site.
7. Are truncated dome panels required at the concrete landing with ramps? If so, where should they be placed?
ADA Panels are required for all public walkway landings. See ADA RAMP NOTE B on sheet CS-05.
8. Is the concrete flatwork at the playground entrance the same elevation as the concrete curb wall? What is the elevation of the new playground surface at the ADA entrance?
Concrete flat work at entrance will match the safety surface elevation. Elevation call outs for curb and sidewalk transition are shown on sheet 3.
9. Is top of footing for the retaining wall at elevation 42.83?
Because the wing walls taper with the existing landscaping, and a portion of the wall needs to match the upper tier, the most critical elevations are the top of wall. Contractor can adjust wall footing depths relative to top of the wall, depending on site conditions, but top of footing elevation of 42.83 is a good minimum assumption.
10. What are the elevations at the 2 end walls of the retaining walls?
Wall Elevation Section A-A on sheet 4 gives minimum top of wall elevations to match proposed landscaping. Approx 43.25 to 43.50. Field conditions may change those elevations by a few tenths.
11. There is a callout on the reinforcement on the retaining wall for "x" bars, but not called out on the retaining wall details. Please clarify.
"X" Dimension is on Detail - See sheet 4.
12. Are there 3 mats of vertical rebar in the retaining wall?
Profile view and Front View of rebar location should show "L" Bars and "O" Bars.
13. Should the top of retaining wall have a chamfered edge or rounded edge?
Its my understanding that the playground supply company will be putting a fascia on the wall and cover most of the exposed concrete. But having a chamfered edge on the side with the upper tier may be helpful, but not required.
14. Is there a pre-bid scheduled for this project?
There is no pre-bid meeting for this project. See Advertisement for Bids section of Bid Docs. Contractor should visit site before bid to confirm site conditions before submitting a bid.
15. Is this project tax exempt?
Project is not tax exempt.
16. What is the scheduled start date for this project?
Project start date can happen once the city makes the award after bid opening and issues the Notice to Proceed. This is anticipated to happen before the end of March.
17. When is the playground contractor scheduled to start?
Playground contractor will coordinate with awarded city contractor on some of the install items, but needs a few weeks in May and June to finish the project.





P.O. Box 3448
Logan, UT 84323

www.dwaconstruct.com

Phone (435) 752-6860
Fax (435) 752-7606