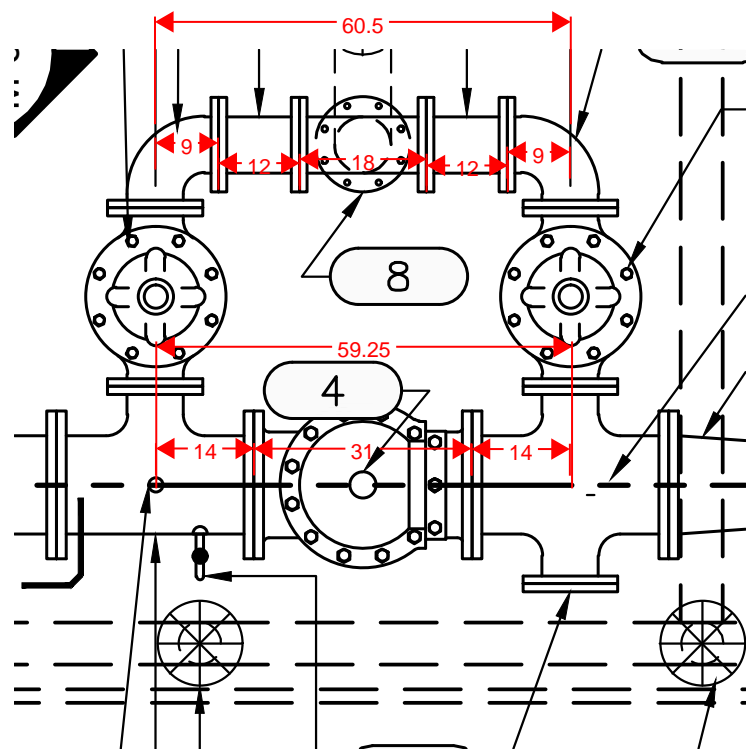
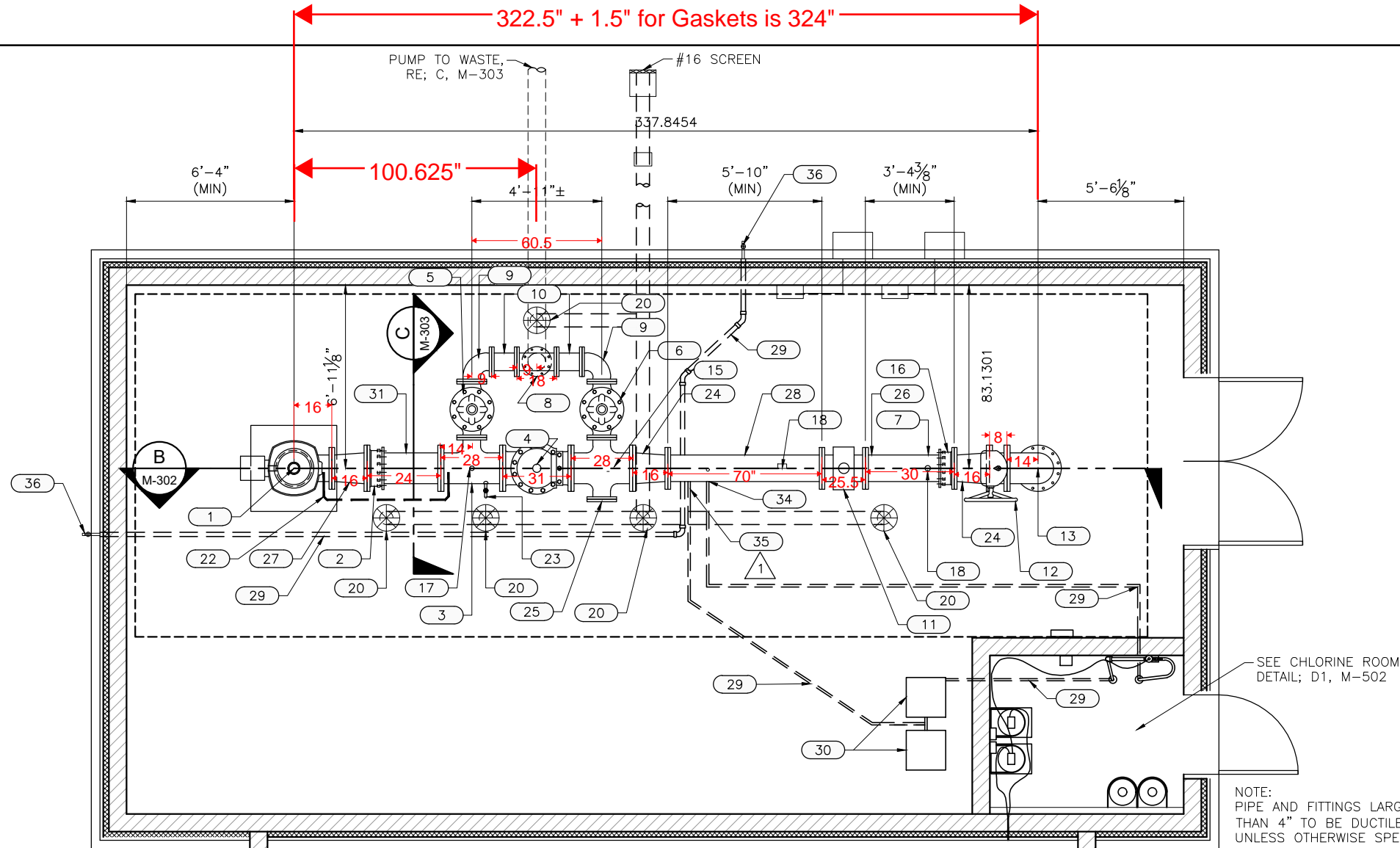


Plot Date: 9/22/2022 3:51 PM Plotted By: Curran Danna
 Date Created: 9/22/22 JUB: CONCENTRAL CLIENT SUIT SMITHFIELD CITY PROJECT: 57-21-030 SMITHFIELD CENTRAL PARK WELLS EQUIPPING DESIGN: CAD SHEET: MECHANICAL 57-21-030 M-301X.DWG


A WELL TO TANK PIPING PLAN
SCALE: 3/8" = 1'-0"



KEYNOTES	
MARK	NOTE
1	DEEP WELL VERTICAL TURBINE PUMP, MOTOR, AND DISCHARGE HEAD, SEE SPECIFICATIONS. PROVIDE FOR SEAL WATER DISCHARGE TO FLOOR DRAIN.
2	14" D.I. FLANGE COUPLING ADAPTOR W/ RESTRAINING LUGS.
3	14"x8" D.I. FL REDUCING TEE.
4	14" SWING CHECK VALVE.
5	8" PUMP CONTROL VALVE CLA-VAL MODEL 61-02, SEE SPECIFICATIONS.
6	8" SURGE AND PRESSURE RELIEF VALVE CLA-VAL MODEL 52-03, SEE SPECIFICATIONS.
7	12" D.I. FLxPE SPOOL, LENGTH AS REQUIRED.
8	8" D.I. FL TEE.
9	8" D.I. FL 90° ELBOW.
10	8" D.I. FLxPE SPOOL, LENGTH AS REQUIRED (UNI-FLANGE TYPE FITTING MAY BE USED)
11	12" FLOW METER, MAINTAIN UPSTREAM AND DOWNSTREAM DIMENSIONS, SEE SPECIFICATIONS.
12	14" D.I. FL BUTTERFLY VALVE WITH HAND WHEEL.
13	14" D.I. FL 90° ELBOW.
14	NOT USED
15	14" D.I. FL x 8" FL CROSS
16	12" D.I. FLANGE COUPLING ADAPTOR W/ RESTRAINING LUGS.
17	DIRECT TAP 2" AND VACUUM VALVE SMOOTH NOSE SAMPLING TAP AND PRESSURE SWITCH; SEE DETAIL A1, M-503
18	PRESSURE GAUGE, PRESSURE TRANSDUCER AND SMOOTH NOSE SAMPLE TAP. SEE DETAIL; A3, M-503
19	PIPE SUPPORT, TYP. SEE DETAIL A2 SHEET M-501.
20	4" FLOOR DRAIN; SEE DETAIL A1, M-504
21	FLANGED 45° 10"x8" REDUCING ELBOW WITH #4 AND 3/4" EXPANDED STAINLESS STEEL SCREEN
22	3/4" GALVANIZED PRE-LUBE LINE WITH SOLENOID VALVE, FLOW SWITCH, AND PIPE SUPPORTS. PROVIDE CONNECTION TO DISCHARGE COLUMN. INTERLOCK WITH MOTOR STARTER. SEE DETAIL D1, M-501
23	CENTRIFUGAL SAND SAMPLER, SEE DETAIL D1 ON SHEET M-503
24	12"x14" D.I. FLxFL REDUCER
25	8" D.I. BLIND FLANGE
26	FL x PE LENGTH AS SHOWN
27	14" D.I. REDUCER AS NEEDED, SEE PUMP DISCHARGE HEAD SHOP DRAWING.
28	12" FLANGED SPOOL
29	3" PVC CONDUIT, WITH SWEEP ELBOWS, FOR CHLORINATOR SYSTEM; WATER SUPPLY AND OUTLET
30	BOOSTER PUMPS, MOUNT TO 18" x 18" x 3' TALL GALVANIZED TABLES. SEE DETAIL; C1, M-504
31	14" D.I. FL x PE SPOOL LENGTH AS REQUIRED
32	8" FLANGE COUPLER ADAPTOR WITH RESTRAINING LUGS
33	CONTRACTOR TO SHORTEN OR EXTEND 16" CASING TO FINISH HEIGHT, CONTRACTOR TO ALSO EXTEND 2" SOUNDING TUBE
34	CHLORINE INJECTOR QUILL
35	3/4" CHLORINE FEED LINE WITH BALL VALVE AND CLEAR Y STRAINER INSTALLED PRIOR TO GOING UNDER FLOOR
36	FROST FREE HOSE BIB, ZURN Z1345-10 OR ZURN Z1320XL OR EQUAL

SEE CHLORINE ROOM DETAIL; D1, M-502


NOTE:
PIPE AND FITTINGS LARGER THAN 4" TO BE DUCTILE IRON UNLESS OTHERWISE SPECIFIED.



J-U-B ENGINEERS, INC.

1047 South 100 West,
Suite 180
Logan, UT 84321
Phone: 435.713.9514
Fax: 435.713.9503
www.jub.com

CONSTRUCTION

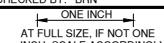


57-21-030
SET

NO.	REVISION	DATE
1	CHLORINE FEED LINE	APR 2022

CENTRAL PARK WELL EQUIPPING
SMITHFIELD CITY

WELL TO TANK PIPING PLAN

FILE: 57-21-030_M-301X
JUB PROJ #: 57-21-030
DRAWN BY: JAJ
DESIGN BY: DCK
CHECKED BY: BRN

AT FULL SIZE, IF NOT ONE INCH SCALE ACCORDINGLY
LAST UPDATED: 9/22/2022
SHEET NUMBER: M-301