



ADDENDUM 002

project	LCSD Hillcrest Elementary	project no.	18285
date	8 February 2019	contractor	DWA Construction
owner	Logan City School District	bid date	12 February 2019

This Addendum shall be considered part of the Contract Documents and Project Manual for the above mentioned project as though it had been issued at the same time and shall be incorporated integrally therewith. Where provisions of the following supplementary data differ from those of the original Contract Documents and Project Manual, the Addendum shall govern and take precedence.

General

- Electrical - Refer attached documents
 - Light fixture GV242 shall be considered GV241
- Mechanical - Refer attached documents
- Architectural
 - All walls to be primed behind millwork locations
 - All drawers to have hardboard bottoms
 - All toilet paper dispensers, paper towel dispensers, sanitary napkin/tampon vendors/disposals, changing stations, etc. are provided by Owner, installed by GC
 - Wall mounted toilet room mirrors - frameless, 24" x 36" as per drawings
 - Coat hooks shall be provided & installed in each toilet partition stall door
 - Hand dryers scope is rough-in only as per drawings
 - Fire extinguishers & locations - boiler room, receiving, elevator equipment room, & (3) level 2 mechanical rooms to be installed using wall mounted brackets. The teacher lounge to be installed using semi-recessed extinguisher cabinet.
 - Provide (1) grommet for each knee space & (2) grommets for each media center & reception knee space
 - Coordinate final location in field w/ Architect
 - Provide 5/8" exterior gypsum sheathing at prefinished metal wall panel locations in lieu of the 5/8" exterior FRT plywood sheathing

Drawings

Sheet	Description
A111.1	<ul style="list-style-type: none">● Keynote 302.0 was removed to clarify slab composition
A111.3	<ul style="list-style-type: none">● F7.1 finish callout in gym between overhead doors & stairs changed to F4.1● Ramp 1124 floor callout updated to F4.1 only● Nurse 1132 based updated to B2



ADDENDUM 002

- A112.1
 - Added typical dimension (4'-0" wide) for single sided book cart w/ whiteboard back
- A121.3
 - All references to F10 have been updated to F3.5
- A122.1
 - Added typical dimension (4'-0" wide) for single sided book cart w/ whiteboard back
 - Added keynotes to single sided book cart w/ whiteboard for clarification - Quantities to match those indicated on A112.1
- A132
 - Keynote 2603.0 was revised to 2306.0 to clarify equipment on roof
- A400
 - Updated LVT product to Johnsonite, ID Latitude
 - Refer updated specification notes below
 - F1 has been updated to 24x24 carpet tile
 - Precast stair treads to be natural gray
 - W3 - Updated to Matte Arctic White
 - W4 - Updated to Matte Desert Gray
 - F5 - Updated to remove epoxy grout
 - Elevator floor finish - F2 carpet provided by GC
- A407
 - Clarified book cart scope for classrooms by adding keynote 1203.2 to specifically note metal books carts & refer specifications in lieu of keynote 1203.0
- A410
 - Base cabinet for ice maker - 36W 34H 30D - B221
 - Updated upper cabinets w/ paper slots to 36W 26H 14D - W022 w/ 4" high paper slot
- A412
 - Clarified book cart scope for classrooms by adding keynote 1203.2 to specifically note metal books carts & refer specifications in lieu of keynote 1203.0
- A414
 - Updated detail D4 cabinets to 36W 34H 18D - B221 to reflect mechanical radiator behind & added an end panel
 - Added keynote to clarify perforated metal panel grilles in desk millwork - Aluminum grille equal to McNichols 1/8" diameter holes w/ 3/16" staggered centers - .05 gauge
 - Updated media center & reception millwork to all be lockable
- A510
 - Updated detail B6/D6/E6 indicate 3/8" exterior plywood blocking to provide slope for exterior sheathing
- A512
 - Provide (2) 2" x 3" x 3/16" steel tubes w/ 3" x 5" x 1/4" base plate anchored to concrete slab in partial height wall between millwork & window system
- A530/A531
 - References to fully adhered single-ply roof system over rigid insulation was revised to clarify fully adhered application to parapet wall, not the main roof system
- A550
 - Railing type clarifications
 - Detail C6 - Type 6
 - Detail D4 - Type 7
 - Detail E1 - Types 3 & 4



ADDENDUM 002

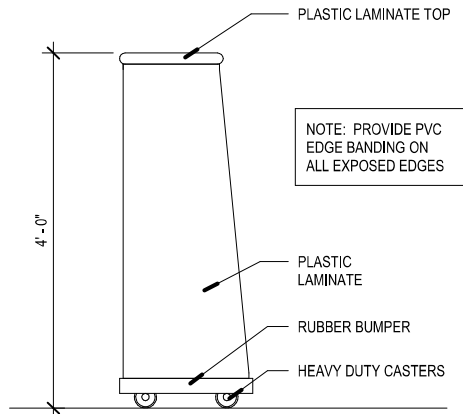
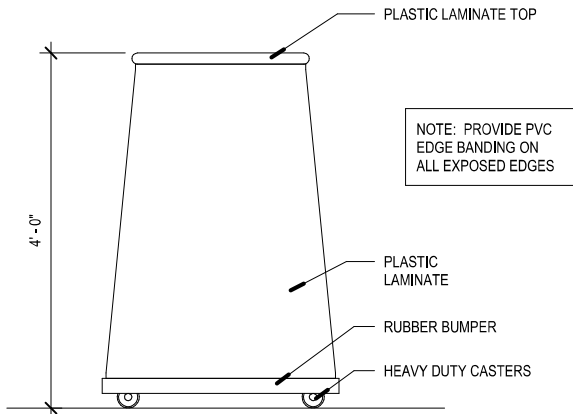
- Detail E2 - Type 6
 - Detail E4 - Type 7
 - Detail E5 - Type 5
- A551
- Notes referencing tempered glazing @ glass railings have been revised to 1/2" tempered, safety laminated glazing
- A560
- Updated details B3/B4 to reflect 1/2" ext. plywood blocking for roller shade installation
- A570
- Updated detail E6 to clarify the extent of metal strapping use
 - 6" x 16ga continuous metal strapping shall be used only at base cabinet locations
 - 2x6 wood blocking shall be used at all other blocking applications & locations
 - Updated detail D1 to note clear sealed 1-1/2" maple top
 - Added detail for single sided book cart w/ whiteboard
 - Refer attached sketch
 - Updated detail C3 to provide plastic laminate bullnose in lieu of hardwood
- A571
- Clarification of detail A5 drawer hardware - Provide 1/8" x 3/4" aluminum rails inset into top of drawer side panels
- A572
- Updated details A1/A2/A5 to reflect plastic laminate countertops in lieu of solid surface
 - Updated details A2/A4/B1/D2 to reflect backsplash
 - Updated detail C3 to provide 3/4" shelves
 - Updated detail C4 to provide 3/4" shelves & 1/2" solid surface countertop
 - Updated detail C5 to provide (3) in lieu of 4
- A573
- Updated detail A1 to reflect perforated metal panel grilles in desk millwork - Aluminum grille equal to McNichols 1/8" diameter holes w/ 3/16" staggered centers - .05 gauge
 - Updated details A2/A5/B1/B2/D1/D4 to note accent plastic laminate in reveals
 - Clarification of details A5/B2 drawer hardware - Provide 1/8" x 3/4" aluminum rails inset into top of drawer side panels
- A590
- Carpet to LVT transition to match detail C4
- A600
- Overhead door glazing updated to 1/2" insulated tempered as noted in specifications
- A700
- Added signage detail to reflect the signage intent shown for the monument sign as updated in detail A3/AS502
 - Provide 10" text for "Hillcrest Elementary" and 6" text for project address in lieu of the 6" & 4" text noted

Specifications

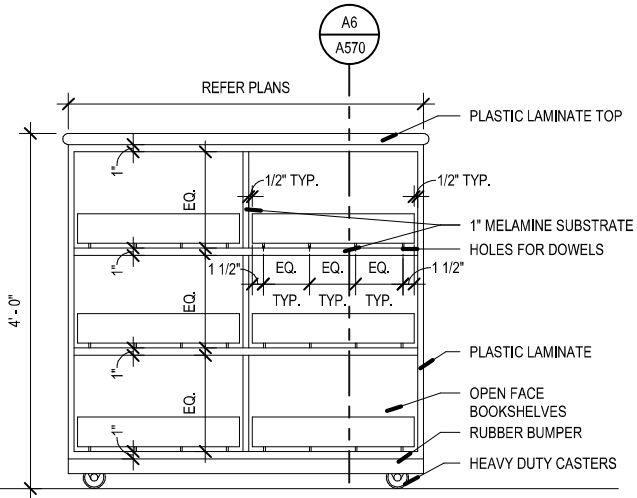


ADDENDUM 002

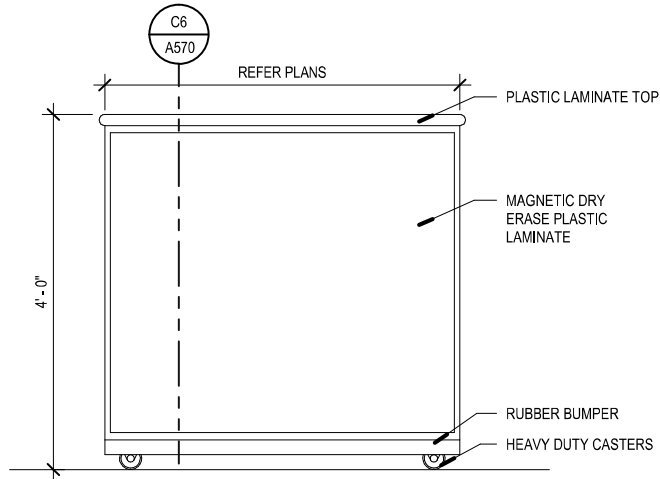
Section	Description
08 4113	<ul style="list-style-type: none">• Add paragraph 2.1 B.6:<ul style="list-style-type: none">○ “6. Manko Window Systems”
09 3013	<ul style="list-style-type: none">• Change paragraph 2.5 A from “Use at wet areas such as showers, etc.” to “Use at wet areas including showers and kitchen quarry tile
09 6519	<ul style="list-style-type: none">• Change paragraph 2.1 A. 2 from “I.D. Freedom” to “I.D. Latitude w/ Tectonic Finish”• Delete paragraph 2.1, B.5
10 2113.15	<ul style="list-style-type: none">• Delete this section from the Project Manual, including Tables of Contents
10 2113.19	<ul style="list-style-type: none">• Add section 10.2113.19 “Plastic Toilet Compartments (Phenolic Core), issued herewith, to the Project Manual. Add section number and name to overall Table of Contents and to Division 10 Table of Contents.
11 6113	<ul style="list-style-type: none">• Add paragraph 2.2, A.5:<ul style="list-style-type: none">○ “5 Fred Krieger & Co.”



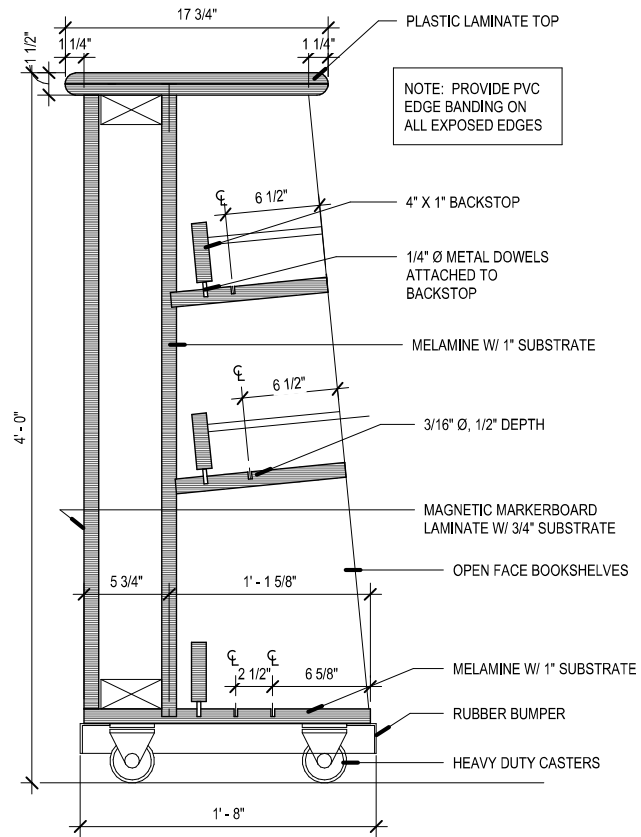
SIDE ELEVATION AT SINGLE SIDED BOOKSHELF/ MARKERBOARD



FRONT ELEVATION



ELEVATION AT MARKERBOARD



C6 MOBILE CABINET W/ MARKERBOARD

SCALE: 1 1/2" = 1'-0"

B4 MOBILE CABINET ELEVATION

SCALE: 3/4" = 1'-0"

PART 2 - PRODUCTS

2.1 MANUFACTURERS

- A. **Available Manufacturers:** Subject to compliance with requirements of Contract Documents, manufacturers offering products which may be incorporated into the Work include, but are not limited to, the following:
1. Bobrick Washroom Equipment, Inc.
 2. Spec-Rite Design; DesignRite.
 3. Knickerbocker Partition Corporation.
 4. Metpar Corp.
 5. Partition Systems, Inc.; Columbia Partitions.
 6. Bradley.

2.2 MATERIALS

- A. **General:** Provide materials that have been selected for surface flatness and smoothness. Exposed surfaces that exhibit pitting, seam marks, roller marks, stains, discolorations, telegraphing of core material, or other imperfections on finished units are unacceptable.
- B. **Solid-Plastic, Phenolic Core:** Solid phenolic core with melamine facing on both sides, fused to substrate without visible glue line or seam. Provide units with eased edges and with minimum 3/4-inch- thick doors and pilasters and minimum 3/4-inch- thick panels and screens.
1. Colors: Colors as selected by Architect from manufacturer's full range of colors.
- C. **Pilaster Shoes and Sleeves (Caps):** ASTM A 666, Type 302 or 304 stainless steel, not less than 0.0312 inch thick and 3 inches high, finished to match hardware.
- D. **Full-Height (Continuous) Brackets:** Manufacturer's standard design for attaching panels and screens to walls and pilasters of the following material:
1. Material: Stainless steel.
- E. **Hardware and Accessories:** Manufacturer's standard design, heavy-duty operating hardware and accessories of the following material:
1. Material: Stainless steel.
- F. **Overhead Bracing:** Manufacturer's standard continuous, extruded-aluminum head rail with antigrip profile in manufacturer's standard finish.
- G. **Anchorage and Fasteners:** Manufacturer's standard exposed fasteners of stainless steel or chrome-plated steel or brass, finished to match hardware, with theft-resistant-type heads. Provide sex-type bolts for through-bolt applications. For concealed anchors, use hot-dip galvanized or other rust-resistant, protective-coated steel.

2.3 FABRICATION

- A. **General:** Provide standard doors, panels, screens, and pilasters fabricated for compartment system. Provide units with cutouts and drilled holes to receive compartment-mounted hardware, accessories, and grab bars, as indicated.
1. Provide internal reinforcement in metal units for compartment-mounted hardware, accessories, and grab bars, as indicated.

- B. **Overhead-Braced-and-Floor-Anchored Compartments:** Provide manufacturer's standard corrosion-resistant supports, leveling mechanism, fasteners, and anchors at pilasters to suit floor conditions. Make provisions for setting and securing continuous head rail at top of each pilaster. Provide shoes at pilasters to conceal supports and leveling mechanism.
- C. **Shower Stalls:** Shower stall to be same phenolic material as the toilet stalls. Shower stalls to have an 8 inch pilaster at the end of each partition in the same plane as the partition. Pilaster is to attach to the floor and ceiling. Fasten as per manufacturer's recommendation. Provide a pilaster from floor to ceiling at the end of the shower stall wall for bracing.
- D. **Urinal Screens:** Extend urinal screen to the floor.
- E. **Doors:** Unless otherwise indicated, provide 24-inch- wide in-swinging doors for standard toilet compartments and 36-inch- wide out-swinging doors with a minimum 32-inch- wide clear opening for compartments indicated to be handicapped accessible.
 - 1. **Hinges:** Self-closing type that can be adjusted to hold door open at any angle up to 90 degrees. Provide full height, continuous Piano Type door hinge of extruded aluminum, 6063-T5, bright anodized finish or Type 304, 16 gauge satin-finish stainless steel. Knuckles shall have nylon separators. Pivot pin shall be 1/4 inch type 304 stainless steel. Hinge shall be predrilled for stainless steel tamper proof bolts, spaced at maximum 8 inches on center. Provide snap on cover over fasteners, attached at top and bottom with theft proof fasteners.
 - 2. **Latch and Keeper:** Manufacturer's heavy-duty cast stainless steel surface-mounted latch unit with combination rubber-faced door strike and keeper designed for emergency access. Provide units that comply with accessibility requirements of authorities having jurisdiction at compartments indicated to be handicapped accessible.
 - 3. **Coat Hook:** Manufacturer's heavy-duty cast stainless steel combination hook and rubber-tipped bumper, sized to prevent door from hitting compartment-mounted accessories.
 - 4. **Door Bumper:** Manufacturer's standard rubber-tipped bumpers at out-swinging doors or entrance screen doors.
 - 5. **Door Pull:** Manufacturer's standard unit that complies with accessibility requirements of authorities having jurisdiction at out-swinging doors. Provide units on both sides of doors at compartments indicated to be handicapped accessible.

PART 3 - EXECUTION

3.1 INSTALLATION

- A. **General:** Comply with manufacturer's written installation instructions. Install units rigid, straight, plumb, and level. Provide clearances of not more than 1/2 inch between pilasters and panels and not more than 1 inch between panels and walls. Secure units in position with manufacturer's recommended anchoring devices.
 - 1. Secure panels to walls and panels with continuous brackets. Locate wall brackets so holes for wall anchors occur in masonry or tile joints. Align brackets at pilasters with brackets at walls.
- B. **Overhead-Braced-and-Floor-Anchored Compartments:** Secure pilasters to floor and level, plumb, and tighten. Secure continuous head rail to each pilaster with not less than 2 fasteners. Hang doors and adjust so tops of doors are parallel with overhead brace when doors are in closed position.

- C. **Screens:** Attach with anchoring devices according to manufacturer's written instructions and to suit supporting structure. Set units level and plumb and to resist lateral impact.

3.2 ADJUSTING AND CLEANING

- A. **Hardware Adjustment:** Adjust and lubricate hardware according to manufacturer's written instructions for proper operation. Set hinges on in-swinging doors to hold open approximately 30 degrees from closed position when unlatched. Set hinges on out-swinging doors and swing doors in entrance screens to return to fully closed position.
- B. **Provide final protection and maintain conditions** that ensure toilet compartments and screens are without damage or deterioration at the time of Substantial Completion.

END OF SECTION



ADDENDUM NO 2

DATE: February 08, 2019

PROJECT NO: 18359

PROJECT: LCSD Hillcrest Elementary School

DIVISION – 21 & 22 & 23

DRAWINGS

SHEET - P601

1. Refer to Kitchen Equipment Schedules:
 - A. Add the following note, "The letter I located under the waste column indicates indirect waste connection. Provide air gap as required."

PRIOR APPROVALS

The following manufacturers, trade names and products are allowed to bid on a name brand only basis with the provision that they completely satisfy all and every requirement of the drawings, specifications and all addenda shall conform to the design, quality and standards specified, established and required for the complete and satisfactory installation and performance of the building and all its respective parts.

<u>Item</u>	<u>Manufacturer</u>	<u>Comments</u>
Faucets	American Standard	APPROVED
Flush Valves	American Standard	NOT APPROVED
Toilet Seats	American Standard	APPROVED
Water-to-Water Heat Pumps	Aermec	APPROVED
Water-to-Water Heat Pumps	Water Furnace	NOT APPROVED
Water-to-Air Heat Pumps	Water Furnace	APPROVED
Condensing Boiler	Laars	NOT APPROVED
Thermometers	Miljoco	APPROVED
Check Valves	Titan	APPROVED
Strainers	Titan	APPROVED
In-Line Pumps	Taco	APPROVED
Base-Mounted Pumps	Taco	APPROVED
Plate & Frame Heat Exchanger	Taco	APPROVED
Plate & Frame Heat Exchanger	Sondex	APPROVED
Vibration & Seismic Control	SRS	APPROVED
Fire Smoke Dampers	Pottorff	APPROVED
Fire Dampers	Pottorff	APPROVED
Flex Duct	Hart & Cooley	APPROVED
Sound Attenuators	Price	APPROVED
Remote Damper Regulators	Pottorff	APPROVED

PRINCIPALS

Mechanical: Kim P. Harris, PE | Richard G. Reeder, PE, LEED AP BD+C | Byron R. Torgersen, PE | Jeffrey S. Watkins, PE | Donald K. Bradshaw, PE CPD | Benjamin L. Davis, PE | Ladd M. Birch, PE | Michael S. Mooney | Neil H. Spencer, PE LEED AP BD+C | Wade W. Bennion, PE LEED AP BD+C | Steven T. Shepherd, PE, LEED AP BD+C | Brad W. Rosenhan, PE | Ray D. Vernon, PE LEED AP BD+C | Jed H. Lyman, PE | J. Howard Van Boerum, PE FACEC (emeritus) | John D. Frank, PE (emeritus)

Electrical: Barry L. Hulet, P.E.

Civil and Fire Protection: David P. Baranowski, P.E.

Gravity Hoods	Western Vents	NOT APPROVED
Exhaust Fans	Twin City	APPROVED
Polypropylene - Random	Niron	NOT APPROVED
Air Handlers	Haakon	APPROVED
Expansion Tanks	Patterson	APPROVED
Air Separators	Patterson	APPROVED
Water-to-Water Heat Pump	Whalen	NOT APPROVED
Water-to-Air Heat Pump	Whalen	NOT APPROVED
Air Handler	Dunham Bush	NOT APPROVED
Air Handler	Mainstream	NOT APPROVED
Strainers	Girswold	APPROVED
Water Softener	Water Specialties	APPROVED
Fire Protection Contractor	Paradise Fire Protection	APPROVED



ELECTRICAL ADDENDUM #2

To:	Scott Lewis	From:	Alex Hood
Company:	VCBO Architects	Phone:	801.708.7073
Date:	February 04, 2019		
Project	LCSD - Hillcrest Elementary School	Project #:	18285

The following are addendum changes to the electrical drawings:

PRODUCT APPROVALS:

Pending compliance to all specified requirements, the following manufacturers are approved to bid this project in addition to those shown on the electrical drawings or the electrical specifications. Approval does not relieve the contractor of fulfilling all specified requirements regardless of what is contained in the prior approval packages submitted by various lighting agencies to the electrical engineer. Light fixtures specified on drawings shall be considered basis-of-design products; all light fixtures approved by addendum shall be equivalent in every respect to those currently specified on the drawings. Non-compliance to these requirements may later result in disapproval in which case the contractor shall be required to provide specified products at no additional cost to the Owner:

Lighting Fixtures:

<u>Type</u>	<u>Manufacturers</u>	
	<u>Base Bid</u>	<u>Package #1</u>
A13	Lithonia	Visionaire Lighting
A15	Lithonia	Visionaire Lighting
AWME	Lithonia	Visionaire Lighting
AWM	Lithonia	Visionaire Lighting
CR2	Mark AL	Pinnacle AL
C4	Lithonia	HE Williams, Inc.
C4E	Lithonia	HE Williams, Inc.
CR4H	Mark AL	Pinnacle AL
CR4HE	Mark AL	Pinnacle AL
DL1	Indy	Lightolier
DL1E	Indy	Lightolier
FA4	Lithonia	DayBrite
FA4E	Lithonia	DayBrite
FP	Lithonia	Stonco
GA22	Lithonia	DayBrite
GA24	Lithonia	DayBrite
GA24E	Lithonia	DayBrite
GA241	Lithonia	DayBrite
GA241E	Lithonia	DayBrite
HL	Lithonia	DayBrite
HLE	Lithonia	DayBrite
P2	Contractor Allowance	-
P3	Contractor Allowance	-
PL4	ALW	Pinnacle AL
PL8	ALW	Pinnacle AL

ADDRESS
244 W. 300 N. #100
Salt Lake City, UT 84103

OFFICE
(801) 534-1130
(801) 534-1080

WEB
www.envisioneng.com
info@envisioneng.com

FAX
EMAIL



SKY	Lithonia	HE Williams, Inc
ST4R	Spec	Strand Lighting
ST4S	Spec	Strand Lighting
TL	Kelvix	
WB4E	Insight	DayBrite
WB4B	Insight	Pinnacle AL
WB4BE	Insight	Pinnacle AL
WBV8E	Insight	Pinnacle AL
X1	Lithonia	Chloride
X1V	Lithonia	Chloride
X2	Lithonia	Chloride

Approved Lighting Controls

nLight, Watstopper, Lutron (Lutron Wired System only, Lutron Wireless System is not acceptable).

End of Electrical Addendum #2