

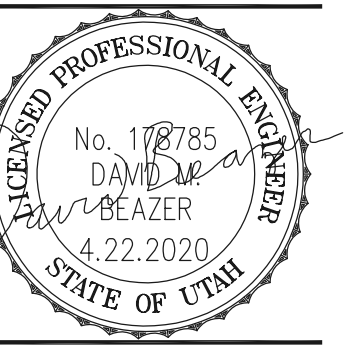


**SOUTH CACHE MIDDLE SCHOOL
 VOCATIONAL BUILDING REMODEL**

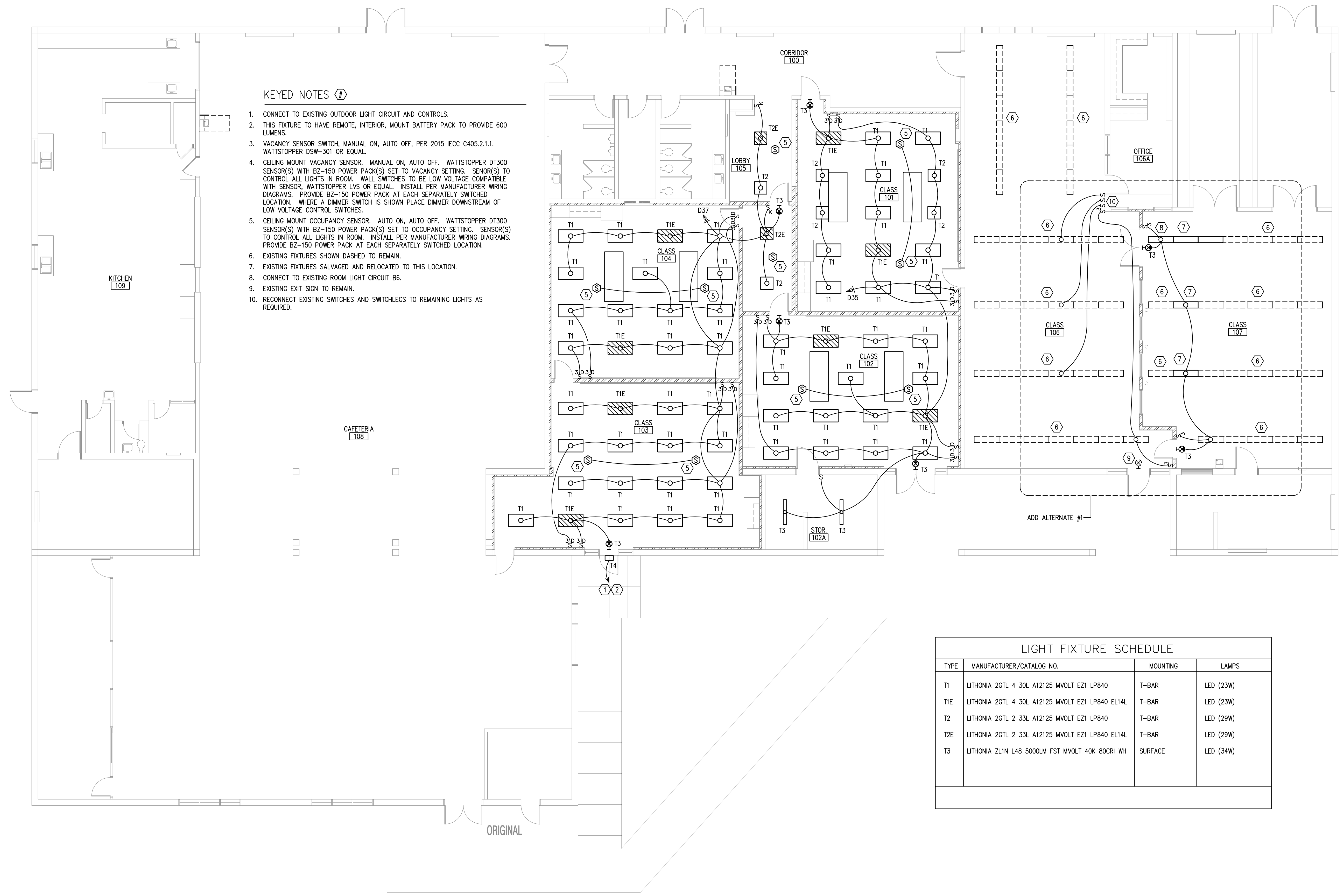
10 SOUTH 480 WEST, HYRUM, UT 84319
 CACHE COUNTY SCHOOL DISTRICT
 84 EAST 2400 NORTH, NORTH LOGAN, UT 84341

MARK	DATE	DESCRIPTION

PROJECT #: 119312
 DRAWN BY: NB
 CHECKED BY: db
 ISSUED: 04/13/2020



VOC. BUILDING
 LIGHTING PLAN



KEYED NOTES

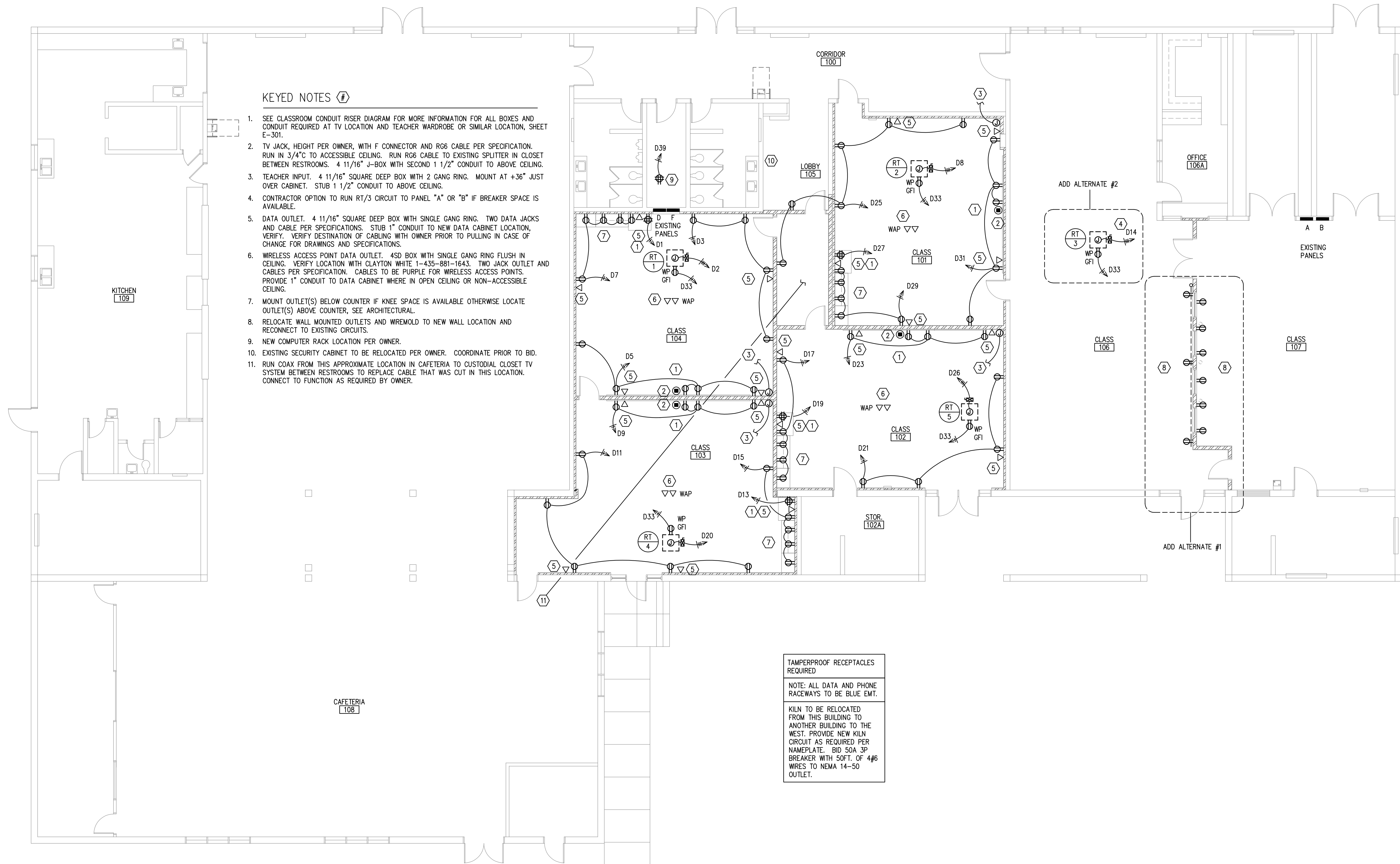
- CONNECT TO EXISTING OUTDOOR LIGHT CIRCUIT AND CONTROLS.
- THIS FIXTURE TO HAVE REMOTE, INTERIOR, MOUNT BATTERY PACK TO PROVIDE 600 LUMENS.
- VACANCY SENSOR SWITCH, MANUAL ON, AUTO OFF, PER 2015 IECC C405.2.1.1. WATTSTOPPER DSW-301 OR EQUAL.
- CEILING MOUNT VACANCY SENSOR. MANUAL ON, AUTO OFF. WATTSTOPPER DT300 SENSOR(S) WITH BZ-150 POWER PACK(S) SET TO VACANCY SETTING. SENSOR(S) TO CONTROL ALL LIGHTS IN ROOM. WALL SWITCHES TO BE LOW VOLTAGE COMPATIBLE WITH SENSOR, WATTSTOPPER LVS OR EQUAL. INSTALL PER MANUFACTURER WIRING DIAGRAMS. PROVIDE BZ-150 POWER PACK AT EACH SEPARATELY SWITCHED LOCATION. WHERE A DIMMER SWITCH IS SHOWN PLACE DIMMER DOWNSTREAM OF LOW VOLTAGE CONTROL SWITCHES.
- CEILING MOUNT OCCUPANCY SENSOR. AUTO ON, AUTO OFF. WATTSTOPPER DT300 SENSOR(S) WITH BZ-150 POWER PACK(S) SET TO OCCUPANCY SETTING. SENSOR(S) TO CONTROL ALL LIGHTS IN ROOM. INSTALL PER MANUFACTURER WIRING DIAGRAMS. PROVIDE BZ-150 POWER PACK AT EACH SEPARATELY SWITCHED LOCATION.
- EXISTING FIXTURES SHOWN DASHED TO REMAIN.
- EXISTING FIXTURES SALVAGED AND RELOCATED TO THIS LOCATION.
- CONNECT TO EXISTING ROOM LIGHT CIRCUIT B6.
- EXISTING EXIT SIGN TO REMAIN.
- RECONNECT EXISTING SWITCHES AND SWITCHLEGS TO REMAINING LIGHTS AS REQUIRED.

TYPE	MANUFACTURER/CATALOG NO.	MOUNTING	LAMPS
T1	LITHONIA 2GTL 4 30L A12125 MVOLT E21 LP840	T-BAR	LED (23W)
T1E	LITHONIA 2GTL 4 30L A12125 MVOLT E21 LP840 EL14L	T-BAR	LED (23W)
T2	LITHONIA 2GTL 2 33L A12125 MVOLT E21 LP840	T-BAR	LED (29W)
T2E	LITHONIA 2GTL 2 33L A12125 MVOLT E21 LP840 EL14L	T-BAR	LED (29W)
T3	LITHONIA ZLIN L48 5000LM FST MVOLT 40K 80CRI WH	SURFACE	LED (34W)

PANEL D		NEW		TYPE		3 Ø 4 WIRE 120/208 VOLTS		LOCATION		MOUNTING	
No.		BRKR		CIRCUIT DESCRIPTION		L O M		WIRE		CIRCUIT DESCRIPTION	
1	20	1		CLASS 104	2	12	360	3360		1	RT/1
3				CLASS 104	4		720	3720			
5				CLASS 104	5		900				
7				CLASS 104	5		900	3900		1	RT/2
9				CLASS 103	4		720				
11				CLASS 103	5		900				
13				CLASS 103	2		360	5860		1	RT/3
15				CLASS 103	5		900				
17				CLASS 102	5		900				
19				CLASS 102	2		360	3360		1	RT/4
21				CLASS 102	4		720	3720			
23				CLASS 102	4		720				
25				CLASS 101	6		1080	4080		1	RT/5
27				CLASS 101	2		360	3360			
29				CLASS 101	5		900				
31				CLASS 101	5		900	900			
33				ROOF TOP OUTLETS	5		900	900			
35				CLASS 101, 102 LIGHTS	X		1000				
37				CLASS 103, 104 LIGHTS	X		1100	1100			
39				DATA CABINET	2		400	400			
41				INTERCOM CABINET	2		400	400			
				TOTALS	22560		22220	22820		AIC	
FEEDER		EXISTING 3/0 200A FEED		AMPS/PHASE		188	185	190	parallel runs		

MECHANICAL EQUIPMENT SCHEDULE									
SYM	DESCRIPTION	LOAD	VOLTS	PHASE	FIRE ALARM SHUTDOWN	CONTROL CIRCUIT BY	* STARTER BY	SAFETY DISCONNECT BY	REMARKS
RT/1	ROOFTOP UNIT	25.8A	208	3	YES	MECH	MECH	ELECT	PROVIDE FUSED DISCONNECT
RT/2	ROOFTOP UNIT	25.8A	208	3	YES	MECH	MECH	ELECT	PROVIDE FUSED DISCONNECT
RT/3	ROOFTOP UNIT	46.3A	208	3	YES	MECH	MECH	ELECT	PROVIDE FUSED DISCONNECT
RT/4	ROOFTOP UNIT	25.8A	208	3	YES	MECH	MECH	ELECT	PROVIDE FUSED DISCONNECT
RT/5	ROOFTOP UNIT	25.8A	208	3	YES	MECH	MECH	ELECT	PROVIDE FUSED DISCONNECT

FINAL BREAKER OR FUSE SIZE PER MANUFACTURER.
* ELECTRICAL CONTRACTOR VERIFY SINGLE SPEED OR TWO SPEED STARTERS WITH MECHANICAL DRAWINGS.



- KEYED NOTES**
- SEE CLASSROOM CONDUIT RISER DIAGRAM FOR MORE INFORMATION FOR ALL BOXES AND CONDUIT REQUIRED AT TV LOCATION AND TEACHER WARDROBE OR SIMILAR LOCATION, SHEET E-301.
 - TV JACK, HEIGHT PER OWNER, WITH F CONNECTOR AND RG6 CABLE PER SPECIFICATION. RUN IN 3/4" TO ACCESSIBLE CEILING. RUN RG6 CABLE TO EXISTING SPLITTER IN CLOSET BETWEEN RESTROOMS. 4 11/16" J-BOX WITH SECOND 1 1/2" CONDUIT TO ABOVE CEILING.
 - TEACHER INPUT. 4 11/16" SQUARE DEEP BOX WITH 2 GANG RING. MOUNT AT +36" JUST OVER CABINET. STUB 1 1/2" CONDUIT TO ABOVE CEILING.
 - CONTRACTOR OPTION TO RUN RT/3 CIRCUIT TO PANEL "A" OR "B" IF BREAKER SPACE IS AVAILABLE.
 - DATA OUTLET. 4 11/16" SQUARE DEEP BOX WITH SINGLE GANG RING. TWO DATA JACKS AND CABLE PER SPECIFICATIONS. STUB 1" CONDUIT TO NEW DATA CABINET LOCATION, VERIFY. VERIFY DESTINATION OF CABLING WITH OWNER PRIOR TO PULLING IN CASE OF CHANGE FOR DRAWINGS AND SPECIFICATIONS.
 - WIRELESS ACCESS POINT DATA OUTLET. 4SD BOX WITH SINGLE GANG RING FLUSH IN CEILING. VERIFY LOCATION WITH CLAYTON WHITE 1-435-881-1643. TWO JACK OUTLET AND CABLES PER SPECIFICATION. CABLES TO BE PURPLE FOR WIRELESS ACCESS POINTS. PROVIDE 1" CONDUIT TO DATA CABINET WHERE IN OPEN CEILING OR NON-ACCESSIBLE CEILING.
 - MOUNT OUTLET(S) BELOW COUNTER IF KNEE SPACE IS AVAILABLE OTHERWISE LOCATE OUTLET(S) ABOVE COUNTER, SEE ARCHITECTURAL.
 - RELOCATE WALL MOUNTED OUTLETS AND WIREMOLD TO NEW WALL LOCATION AND RECONNECT TO EXISTING CIRCUITS.
 - NEW COMPUTER RACK LOCATION PER OWNER.
 - EXISTING SECURITY CABINET TO BE RELOCATED PER OWNER. COORDINATE PRIOR TO BID.
 - RUN COAX FROM THIS APPROXIMATE LOCATION IN CAFETERIA TO CUSTODIAL CLOSET TV SYSTEM BETWEEN RESTROOMS TO REPLACE CABLE THAT WAS CUT IN THIS LOCATION. CONNECT TO FUNCTION AS REQUIRED BY OWNER.

TAMPERPROOF RECEPTACLES REQUIRED

NOTE: ALL DATA AND PHONE RACEWAYS TO BE BLUE EMT.

KILN TO BE RELOCATED FROM THIS BUILDING TO ANOTHER BUILDING TO THE WEST. PROVIDE NEW KILN CIRCUIT AS REQUIRED PER NAMEPLATE: 910 50A 3P BREAKER WITH SOFT. OF 4#6 WIRES TO NEMA 14-50 OUTLET.

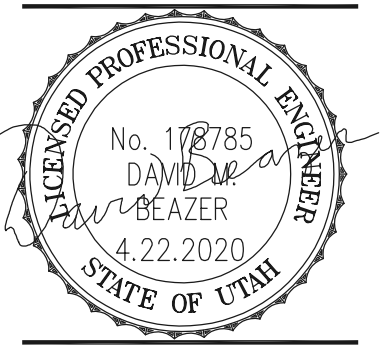


SOUTH CACHE MIDDLE SCHOOL VOCATIONAL BUILDING REMODEL

10 SOUTH 480 WEST, HYRUM, UT 84319
CACHE COUNTY SCHOOL DISTRICT
84 EAST 2400 NORTH, NORTH LOGAN, UT 84341

MARK	DATE	DESCRIPTION

PROJECT #: 119312
DRAWN BY: NB
CHECKED BY: db
ISSUED: 04/13/2020

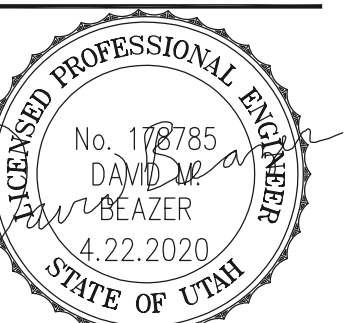


VOC. BUILDING POWER PLAN



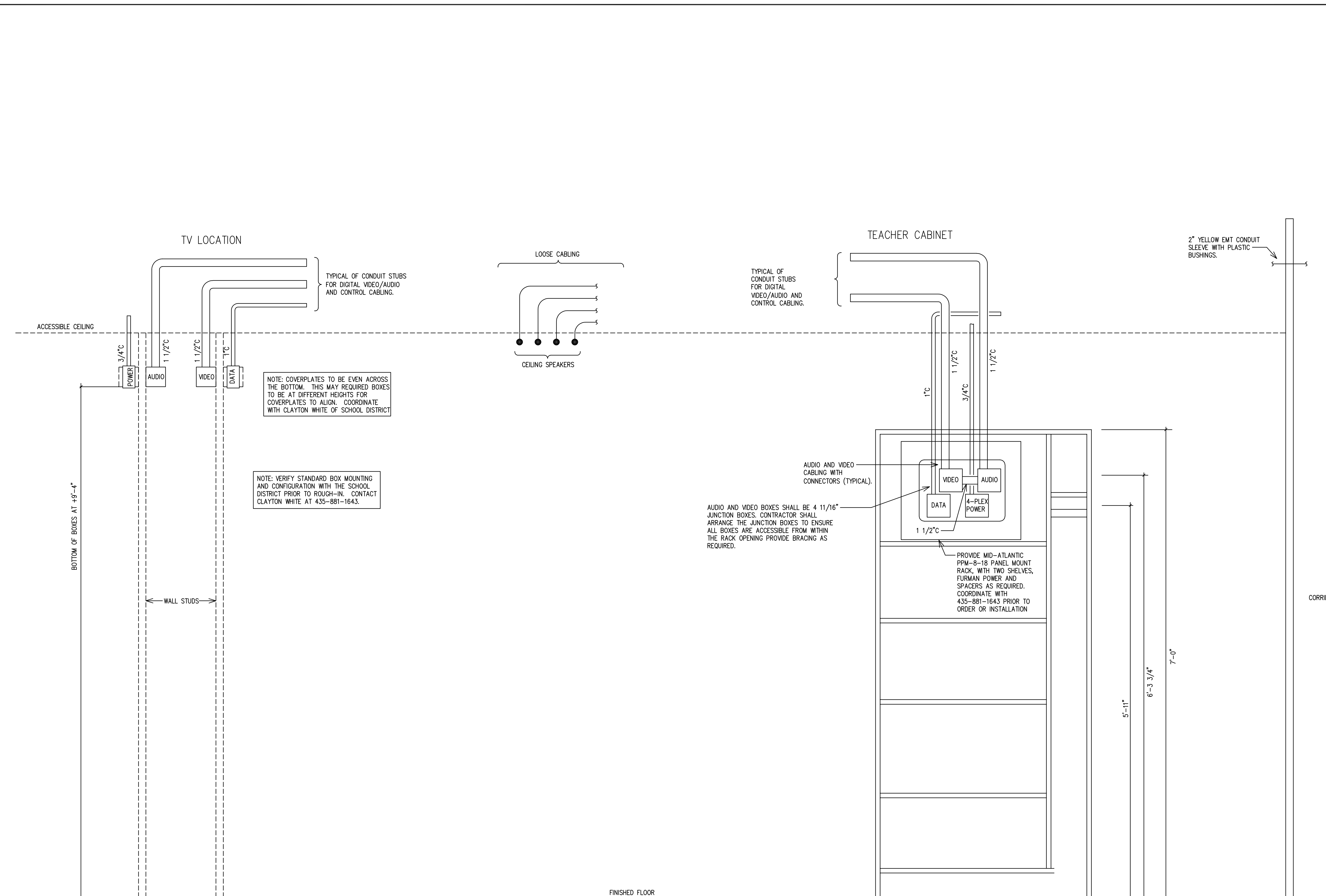
MARK	DATE	DESCRIPTION

PROJECT #: 119312
 DRAWN BY: NB
 CHECKED BY: db
 ISSUED: 04/13/2020



CLASSROOM
 RISER DIAGRAM

E-301



TYPICAL CLASSROOM CONDUIT RISER DIAGRAM

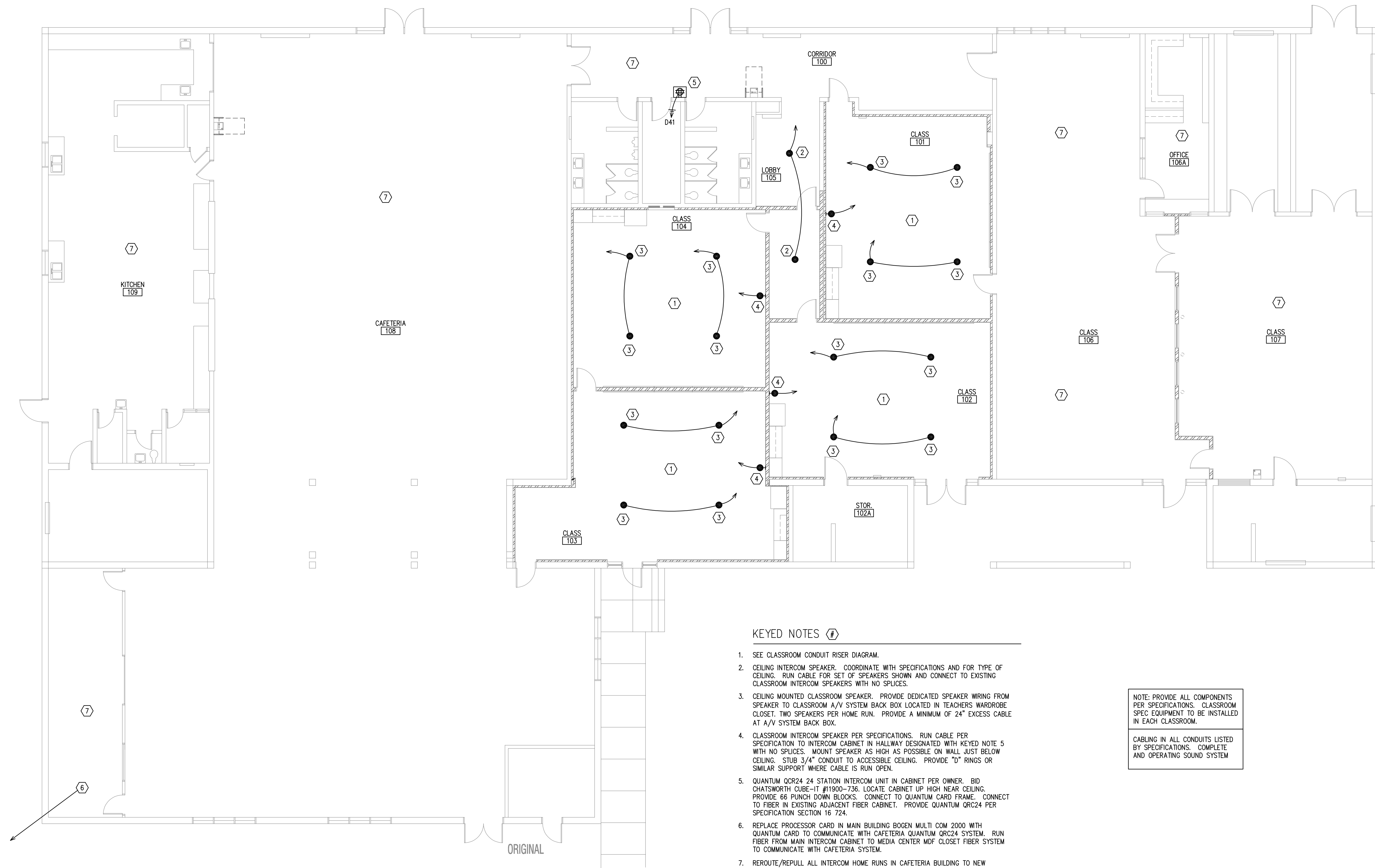
NTS

D
C
B
A

1 2 3 4 5



**SOUTH CACHE MIDDLE SCHOOL
 VOCATIONAL BUILDING REMODEL**
 10 SOUTH 480 WEST, HYRUM, UT 84319
 CACHE COUNTY SCHOOL DISTRICT
 84 EAST 2400 NORTH, NORTH LOGAN, UT 84341



KEYED NOTES (7)

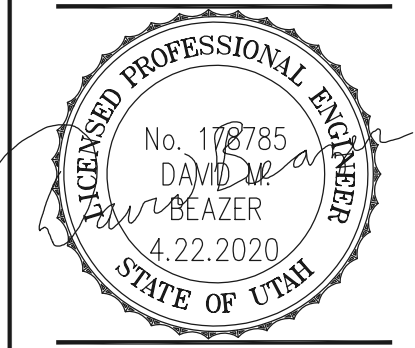
1. SEE CLASSROOM CONDUIT RISER DIAGRAM.
2. CEILING INTERCOM SPEAKER. COORDINATE WITH SPECIFICATIONS AND FOR TYPE OF CEILING. RUN CABLE FOR SET OF SPEAKERS SHOWN AND CONNECT TO EXISTING CLASSROOM INTERCOM SPEAKERS WITH NO SPLICES.
3. CEILING MOUNTED CLASSROOM SPEAKER. PROVIDE DEDICATED SPEAKER WIRING FROM SPEAKER TO CLASSROOM A/V SYSTEM BACK BOX LOCATED IN TEACHERS WARDROBE CLOSET. TWO SPEAKERS PER HOME RUN. PROVIDE A MINIMUM OF 24" EXCESS CABLE AT A/V SYSTEM BACK BOX.
4. CLASSROOM INTERCOM SPEAKER PER SPECIFICATIONS. RUN CABLE PER SPECIFICATION TO INTERCOM CABINET IN HALLWAY DESIGNATED WITH KEYED NOTE 5 WITH NO SPLICES. MOUNT SPEAKER AS HIGH AS POSSIBLE ON WALL JUST BELOW CEILING. STUB 3/4" CONDUIT TO ACCESSIBLE CEILING. PROVIDE "D" RINGS OR SIMILAR SUPPORT WHERE CABLE IS RUN OPEN.
5. QUANTUM QCR24 24 STATION INTERCOM UNIT IN CABINET PER OWNER. BID CHATSWORTH CUBE-IT #11900-736. LOCATE CABINET UP HIGH NEAR CEILING. PROVIDE 66 PUNCH DOWN BLOCKS. CONNECT TO QUANTUM CARD FRAME. CONNECT TO FIBER IN EXISTING ADJACENT FIBER CABINET. PROVIDE QUANTUM QRC24 PER SPECIFICATION SECTION 16 724.
6. REPLACE PROCESSOR CARD IN MAIN BUILDING BOGEN MULTI COM 2000 WITH QUANTUM CARD TO COMMUNICATE WITH CAFETERIA QUANTUM QRC24 SYSTEM. RUN FIBER FROM MAIN INTERCOM CABINET TO MEDIA CENTER MDF CLOSET FIBER SYSTEM TO COMMUNICATE WITH CAFETERIA SYSTEM.
7. REROUTE/REPUSS ALL INTERCOM HOME RUNS IN CAFETERIA BUILDING TO NEW CABINET DESIGNATED IN KEYED NOTE 5. NOT ALL LOCATIONS SHOWN, FIELD VERIFY PRIOR TO BID.

NOTE: PROVIDE ALL COMPONENTS PER SPECIFICATIONS. CLASSROOM SPEC EQUIPMENT TO BE INSTALLED IN EACH CLASSROOM.

CABLING IN ALL CONDUITS LISTED BY SPECIFICATIONS. COMPLETE AND OPERATING SOUND SYSTEM

MARK	DATE	DESCRIPTION

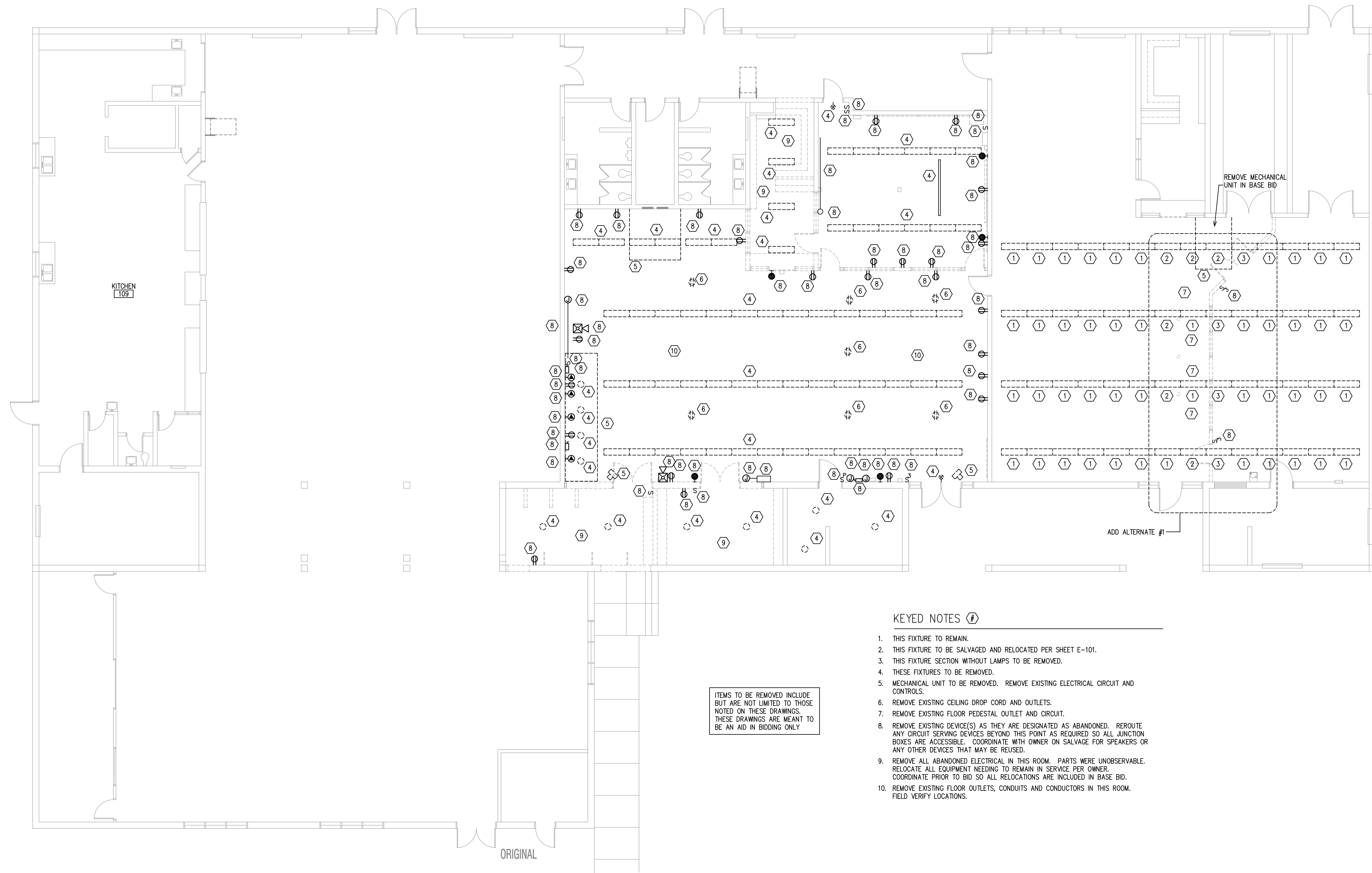
PROJECT #: 119312
 DRAWN BY: NB
 CHECKED BY: db
 ISSUED: 04/13/2020



VOC. BUILDING
 LOW VOLTAGE
 PLAN

E-401

D
C
B
A



ITEMS TO BE REMOVED INCLUDE BUT ARE NOT LIMITED TO THOSE NOTED ON THESE DRAWINGS. THESE DRAWINGS ARE MEANT TO BE AN AID IN BIDDING ONLY

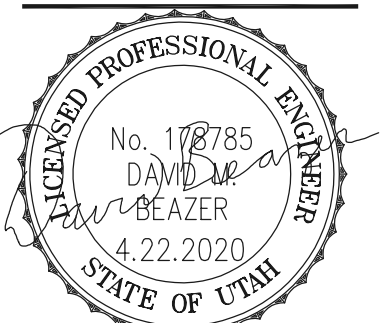
KEYED NOTES (7)

1. THIS FIXTURE TO REMAIN.
2. THIS FIXTURE TO BE SALVAGED AND RELOCATED PER SHEET E-101.
3. THIS FIXTURE SECTION WITHOUT LAMPS TO BE REMOVED.
4. THESE FIXTURES TO BE REMOVED.
5. MECHANICAL UNIT TO BE REMOVED. REMOVE EXISTING ELECTRICAL CIRCUIT AND CONTROLS.
6. REMOVE EXISTING CEILING DROP CORD AND OUTLETS.
7. REMOVE EXISTING FLOOR PEDESTAL OUTLET AND CIRCUIT.
8. REMOVE EXISTING DEVICE(S) AS THEY ARE DESIGNATED AS ABANDONED. REROUTE ANY CIRCUIT SERVING DEVICES BEYOND THIS POINT AS REQUIRED SO ALL JUNCTION BOXES ARE ACCESSIBLE. COORDINATE WITH OWNER ON SALVAGE FOR SPEAKERS OR ANY OTHER DEVICES THAT MAY BE REUSED.
9. REMOVE ALL ABANDONED ELECTRICAL IN THIS ROOM. PARTS WERE UNOBSERVABLE. RELOCATE ALL EQUIPMENT NEEDING TO REMAIN IN SERVICE PER OWNER. COORDINATE PRIOR TO BID SO ALL RELOCATIONS ARE INCLUDED IN BASE BID.
10. REMOVE EXISTING FLOOR OUTLETS, CONDUITS AND CONDUCTORS IN THIS ROOM. FIELD VERIFY LOCATIONS.



MARK	DATE	DESCRIPTION

PROJECT #: 119312
 DRAWN BY: NB
 CHECKED BY: db
 ISSUED: 04/13/2020



VOC. BUILDING
 ELECT DEMO
 PLAN

ED-101