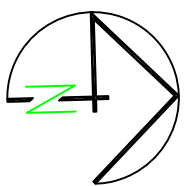


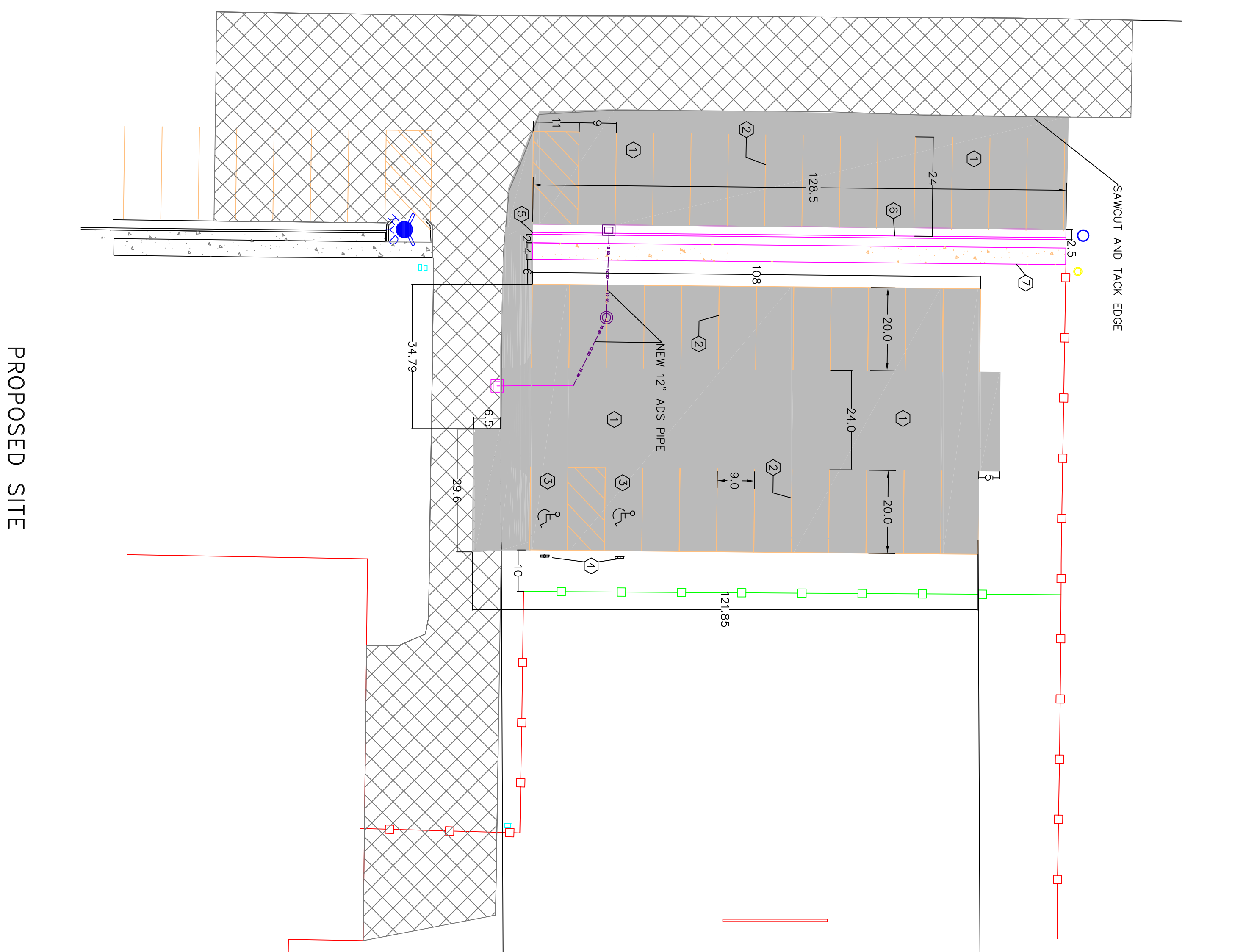
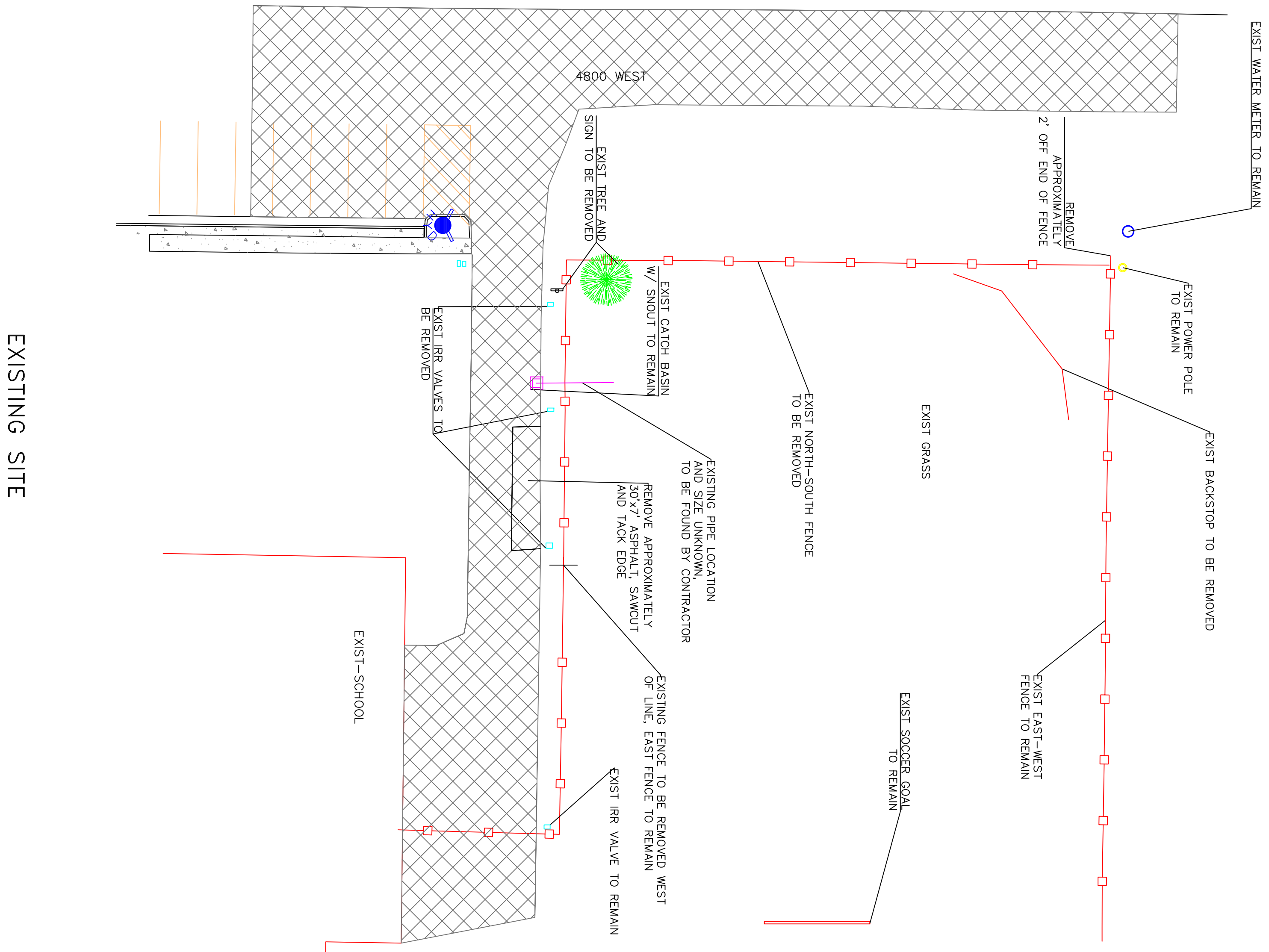
# CENTURY ELEMENTARY NORTH PARKING LOT DEMO/SITE PLAN



0 10 20 40  
SCALE: 1" = 20' (22x34 PLAN SET)

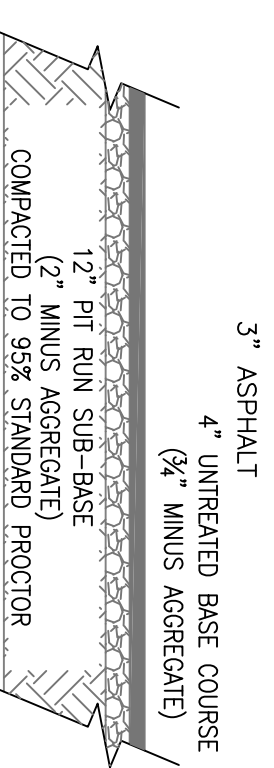
### LEGEND

	EXISTING FENCE
	NEW CHAIN LINK FENCE MATCH EXISTING
	NEW ASPHALT
	EXISTING ASPHALT TO REMAIN
	EXISTING CONCRETE
	NEW CONCRETE

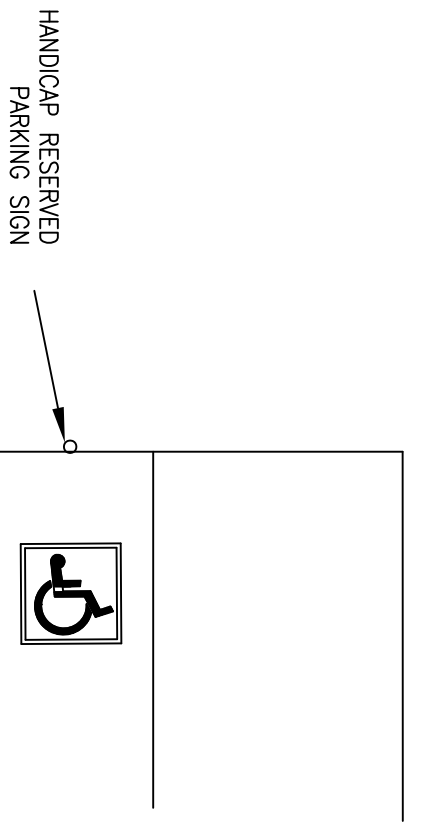


### SITE REFERENCE NOTES

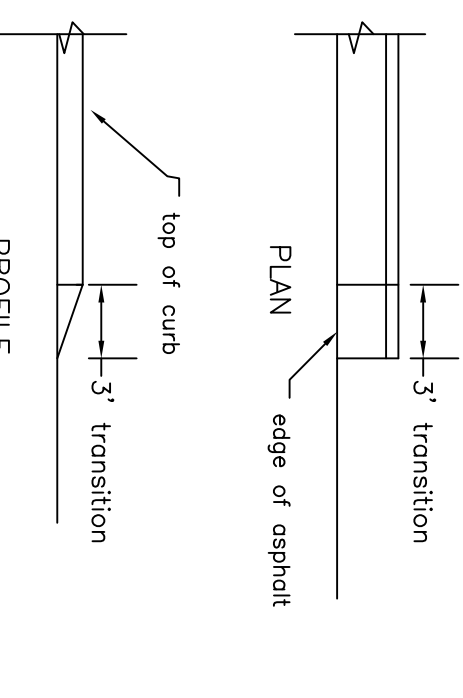
- ① ASPHALT OVER PROPERLY PREPARED BASE COURSE. OR APPROVED EXISTING SOIL (SEE DETAIL A/2)
- ② PAINTED PARKING LOT STRIPING.
- ③ WHITE HANDICAPPED LOGO WITH BLUE BACKGROUND PAINTED (SEE DETAIL B/2)
- ④ HANDICAPPED RESERVED PARKING SIGN-MOUNTED ON FENCE OR POLE
- ⑤ CURB ENDING (SEE DETAIL C/2)
- ⑥ APWA TYPE A CURB AND GUTTER (SEE DETAIL D/2)
- ⑦ NEW 4" THICK SIDEWALK (SEE DETAIL E/2)



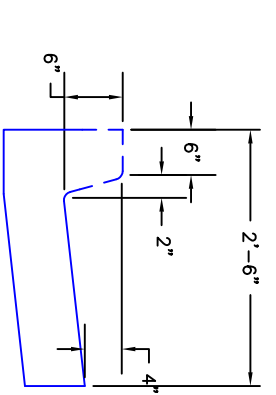
### PARKING PAVEMENT SECTION NOT TO SCALE



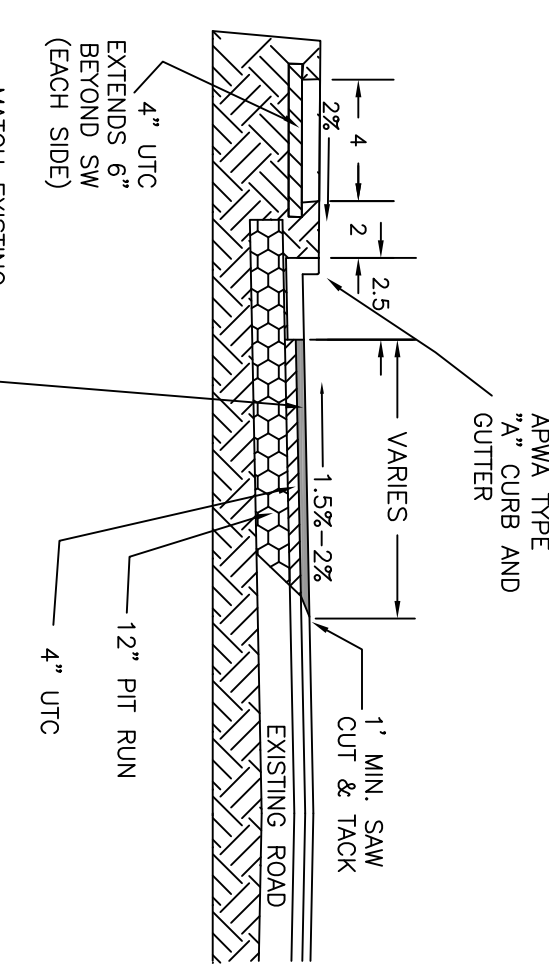
### HANDICAP STALL DETAIL NOT TO SCALE



### CURB AND GUTTER ENDINGS



### INFLOW CURB AND GUTTER DETAIL



### 4800 WEST ROAD CROSS-SECTION NOT TO SCALE

**NOTES:**  
 1. Construction joints 10 feet on center to a depth of 1/4 the curb.  
 2. All Expansion joints with premolded filler 150 feet on center.  
 3. All Exposed concrete surface to have a light broom finish.

<p><b>CONFIDENTIALITY AND COPYRIGHT NOTICE</b></p> <p>UNAUTHORIZED USE, DISCLOSURE, OR COPYING OF THIS DRAWING IS PROHIBITED.</p> <p>CONSTRUCTION DOCUMENTS THAT ARE DISTRIBUTED FOR BIDDING PURPOSES SHALL NOT BE RETURNED AND SHALL BE DESTROYED WITHIN 30 DAYS AFTER THE BID OPENING BY THE PLAN HOLDER.</p> <p style="text-align: center;">COPYRIGHT 2005</p>	<p><b>ALLIANCE CONSULTING ENGINEERS</b>                  150 EAST 200 NORTH SUITE P                  LOGAN, UTAH 84321                  (435)755-5121                  alliancelogon@yahoo.com</p>		
			Date: _____ REVISIONS/ SUBMISSIONS: _____ REVIEWED: _____ CAD FILE: _____
			PROJECT TITLE: <h2 style="text-align: center;">CENTURY ELEMENTARY NORTH PARKING LOT</h2>
			DRAWING TITLE: <h2 style="text-align: center;">DEMO/SITE PLAN</h2>

DATE: \_\_\_\_\_  
 DRAWING No. 2