

ADDENDUM #2
TO
CACHE COUNTY SCHOOL DISTRICT
SOUTH CACHE MIDDLE SCHOOL
VOCATIONAL BUILDING REMODEL
PROJECT #119312

May 6, 2020

<p>Architectural Design West Architects 255 South 300 West Logan, Utah 84321 (435) 752-7031</p>	<p>Darrell Anderson Construction Construction Manager / General Contractor 76 West 2400 North Logan, UT 84323 (435) 752-7605</p>
<p>Architectural Design West Landscape Architects 255 South 300 West Logan, Utah 84321 (435) 752-7031</p>	<p>Structural Solutions Structural Engineer 545 West 465 North Providence, UT 84321 (435) 787-2789</p>
<p>Beazer Engineering Electrical Engineer 525 East 3700 South Millville, UT 84326 (435) 770-8999</p>	<p>Nielson Engineering Mechanical / Plumbing Engineer 156 North 12th Avenue Pocatello, ID 83201 (208) 232-2577</p>

This Addendum forms a part of the Contract Documents and modifies the original Bidding Drawings and Project Manual. Acknowledge receipt of this Addendum in the space provided on the Bid Form. Failure to do so may subject the Bidder to disqualification.

Except as may be otherwise described, labor and materials for the Work hereinafter specified shall conform to all requirements of the Original Specifications.

Total Pages in Addendum: 3

Specifications

AD1-SP1 None

Architectural

AD1-A1 None

Civil – Landscape

AD1- CL1 None

Structural

AD1- ST1 None

Mechanical - Plumbing

AD1-MP1 None

Electrical


AD1-E1 Sheet E-101 – See attached revisions.

Prior Approvals

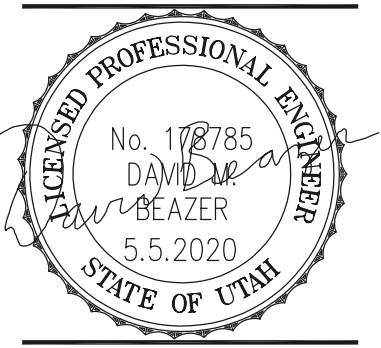
Damper Regulators

Pottorf

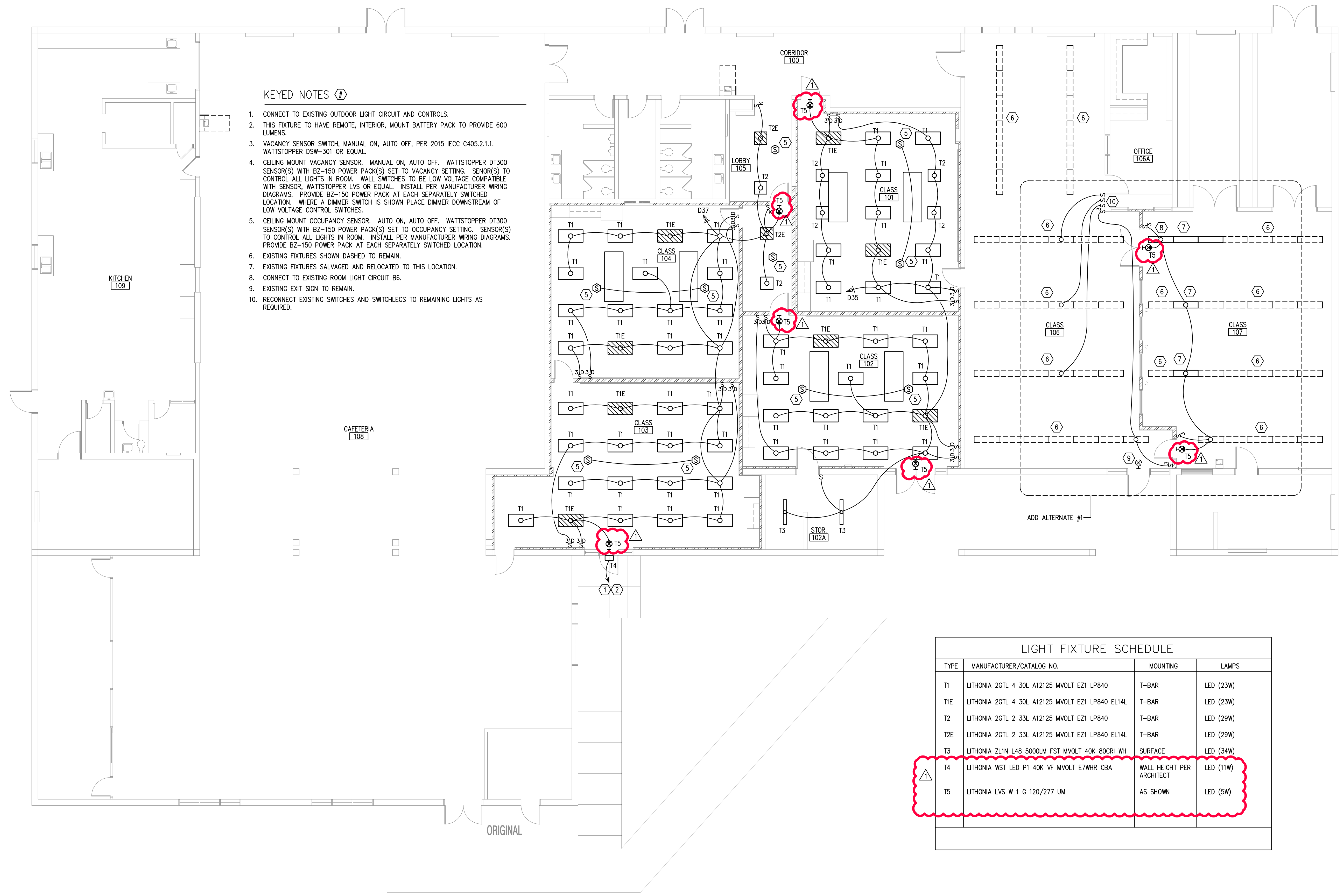
End of Addendum 2

DESCRIPTION:	FIXTURE LABELS AND FIXTURE SCHEDULE ADDITIONS
DATE:	5/5/2020
MARK:	

PROJECT #: 119312
 DRAWN BY: NB
 CHECKED BY: db
 ISSUED: 04/13/2020



VOC. BUILDING
 LIGHTING PLAN



KEYED NOTES

- CONNECT TO EXISTING OUTDOOR LIGHT CIRCUIT AND CONTROLS.
- THIS FIXTURE TO HAVE REMOTE, INTERIOR, MOUNT BATTERY PACK TO PROVIDE 600 LUMENS.
- VACANCY SENSOR SWITCH, MANUAL ON, AUTO OFF, PER 2015 IECC C405.2.1.1. WATTSTOPPER DSW-301 OR EQUAL.
- CEILING MOUNT VACANCY SENSOR. MANUAL ON, AUTO OFF. WATTSTOPPER DT300 SENSOR(S) WITH BZ-150 POWER PACK(S) SET TO VACANCY SETTING. SENSOR(S) TO CONTROL ALL LIGHTS IN ROOM. WALL SWITCHES TO BE LOW VOLTAGE COMPATIBLE WITH SENSOR, WATTSTOPPER LVS OR EQUAL. INSTALL PER MANUFACTURER WIRING DIAGRAMS. PROVIDE BZ-150 POWER PACK AT EACH SEPARATELY SWITCHED LOCATION. WHERE A DIMMER SWITCH IS SHOWN PLACE DIMMER DOWNSTREAM OF LOW VOLTAGE CONTROL SWITCHES.
- CEILING MOUNT OCCUPANCY SENSOR. AUTO ON, AUTO OFF. WATTSTOPPER DT300 SENSOR(S) WITH BZ-150 POWER PACK(S) SET TO OCCUPANCY SETTING. SENSOR(S) TO CONTROL ALL LIGHTS IN ROOM. INSTALL PER MANUFACTURER WIRING DIAGRAMS. PROVIDE BZ-150 POWER PACK AT EACH SEPARATELY SWITCHED LOCATION.
- EXISTING FIXTURES SHOWN DASHED TO REMAIN.
- EXISTING FIXTURES SALVAGED AND RELOCATED TO THIS LOCATION.
- CONNECT TO EXISTING ROOM LIGHT CIRCUIT B6.
- EXISTING EXIT SIGN TO REMAIN.
- RECONNECT EXISTING SWITCHES AND SWITCHLEGS TO REMAINING LIGHTS AS REQUIRED.

TYPE	MANUFACTURER/CATALOG NO.	MOUNTING	LAMPS
T1	LITHONIA 2GTL 4 30L A12125 MVOLT E21 LP840	T-BAR	LED (23W)
T1E	LITHONIA 2GTL 4 30L A12125 MVOLT E21 LP840 EL14L	T-BAR	LED (23W)
T2	LITHONIA 2GTL 2 33L A12125 MVOLT E21 LP840	T-BAR	LED (29W)
T2E	LITHONIA 2GTL 2 33L A12125 MVOLT E21 LP840 EL14L	T-BAR	LED (29W)
T3	LITHONIA ZLIN L48 5000LM FST MVOLT 40K 80CRI WH	SURFACE	LED (34W)
T4	LITHONIA WST LED P1 40K VF MVOLT E7WHR CBA	WALL HEIGHT PER ARCHITECT	LED (11W)
T5	LITHONIA LVS W 1 G 120/277 UM	AS SHOWN	LED (5W)